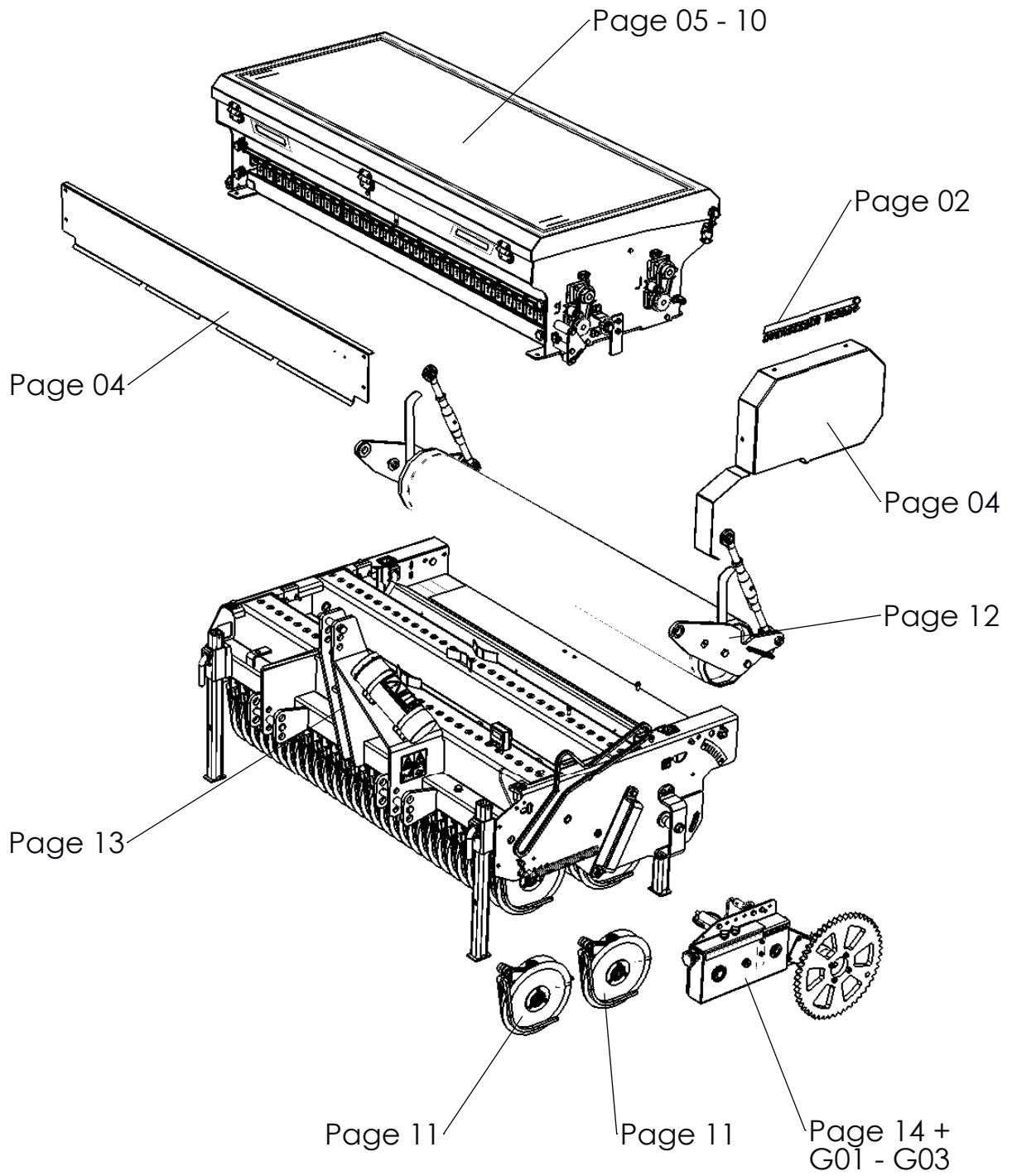
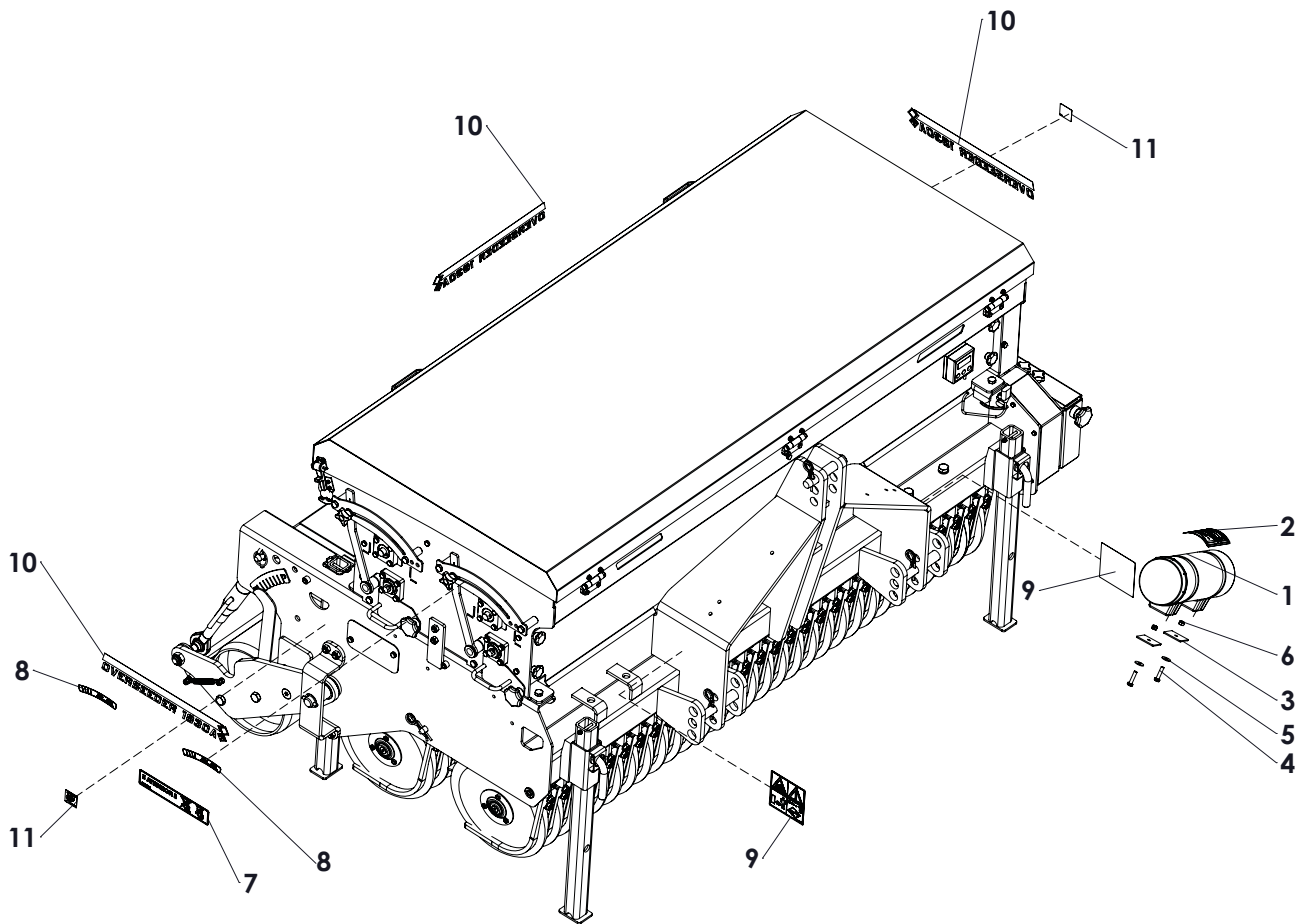


OVERSEEDER 1830A

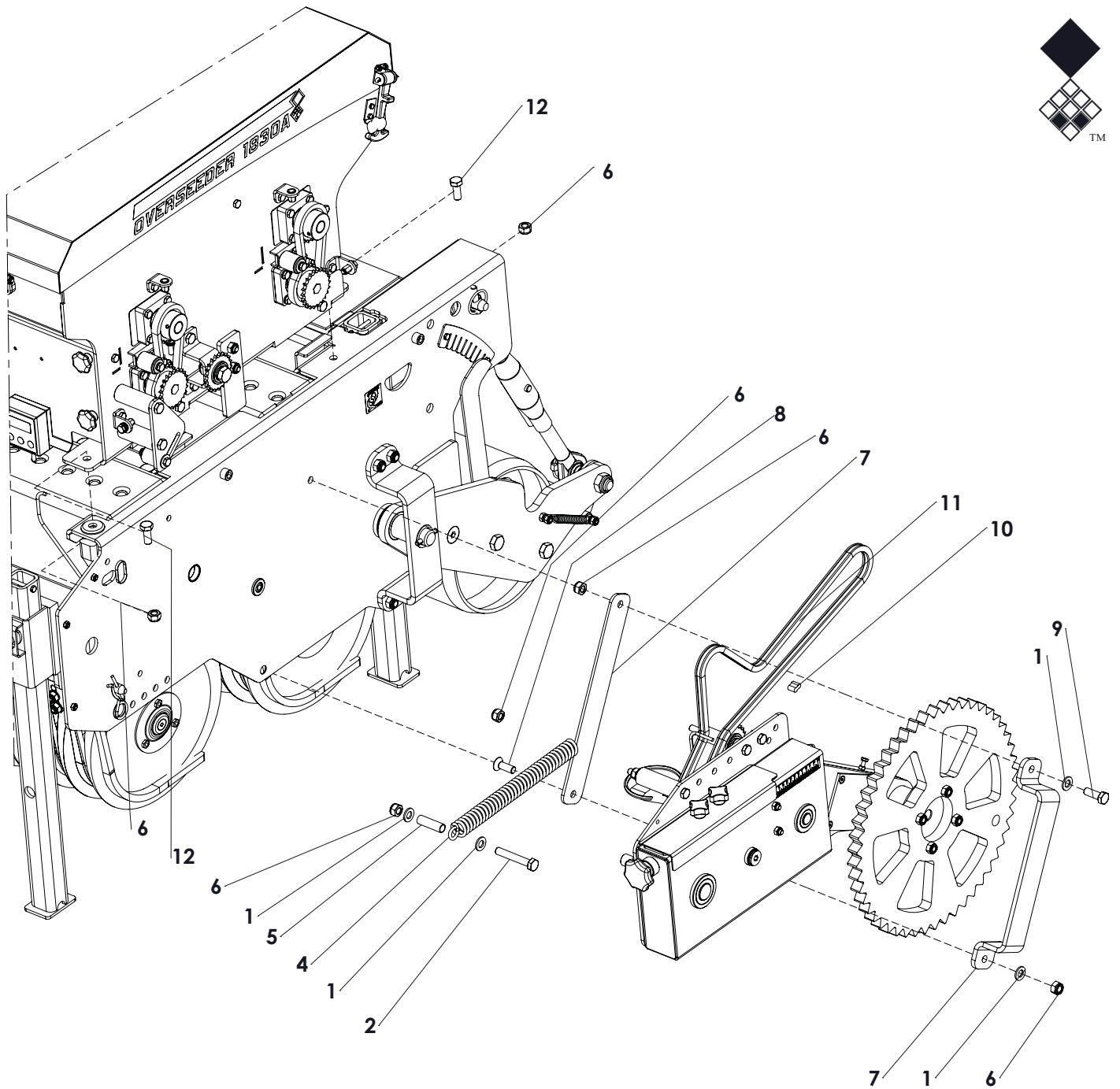


Version: 2242

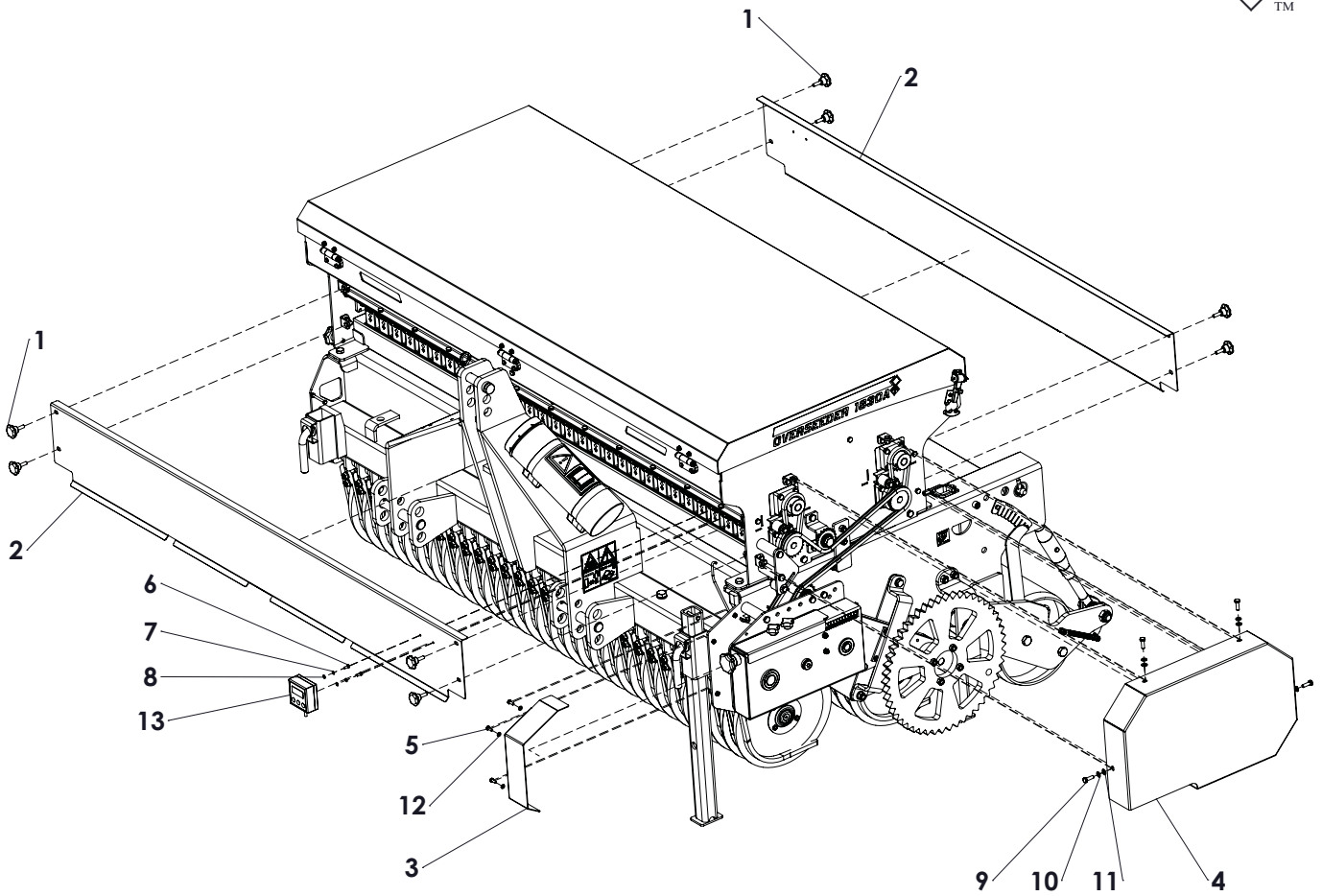




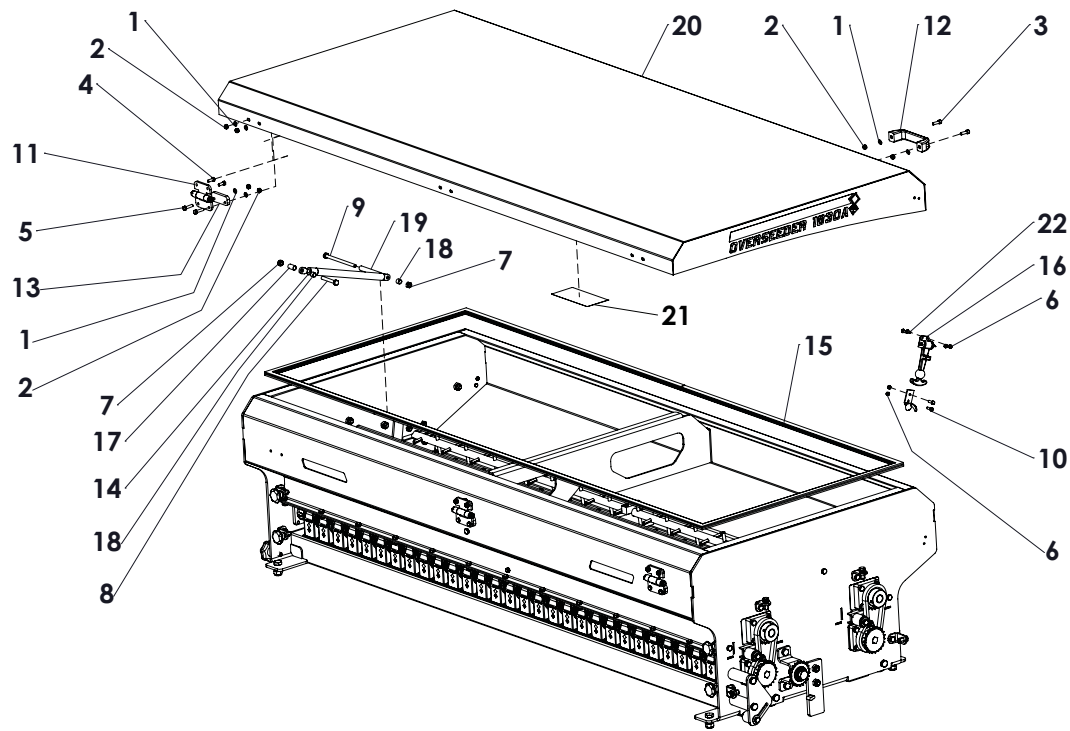
| ITEM | PART NUMBER | DESCRIPTION | REMARKS | QUA |
|------|-------------|------------------------------|---------|-----|
| 1 | 444.803.100 | Toolbox Complete | | 1 |
| 2 | 900.280.402 | Safety decall manual | | 1 |
| 3 | 468.030.530 | Toolbox contraplate | | 2 |
| 4 | 804.080.350 | Bolt M8 x 35 - ISO 4017 | | 2 |
| 5 | 864.080.024 | Large washer M8 - DIN 9021 | | 2 |
| 6 | 830.080.080 | Self Lock Nut M8 - ISO 10511 | | 2 |
| 7 | 922.280.000 | Decall funnel | | 1 |
| 8 | 924.340.001 | Decall adjustment valve | | 2 |
| 9 | 921.280.402 | Safety decall VS | | 2 |
| 10 | 922.260.426 | Label Overseeder 1830 | | 3 |
| 11 | 922.340.008 | Decall fixation point | | 2 |



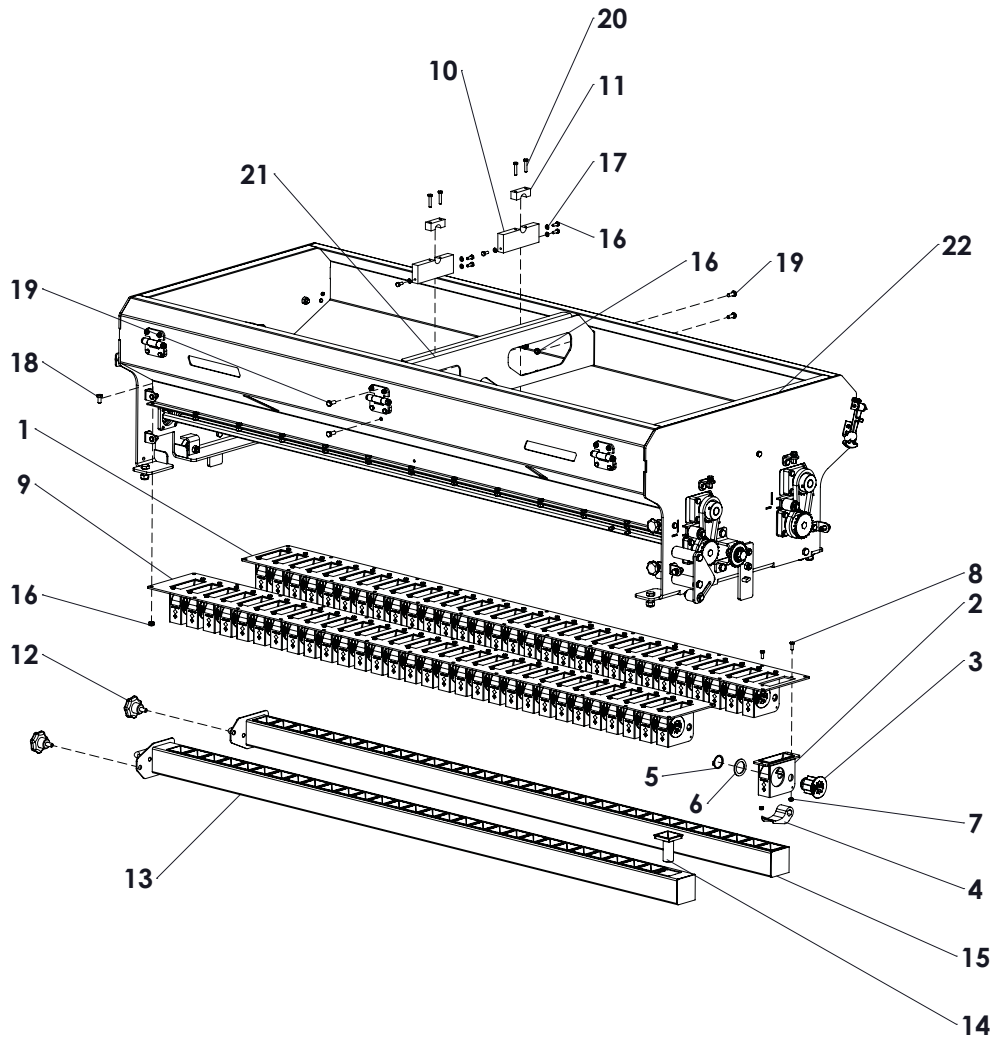
| ITEM | PART NUMBER | DESCRIPTION | REMARKS | QUA |
|------|-------------|--|---------|-----|
| 1 | 864.120.030 | Washer M12 - ISO 7089 | | 4 |
| 2 | 802.120.750 | Bolt M12 x 75 - ISO 4014 | | 1 |
| 6 | 830.120.120 | Self Lock Nut M12 - ISO 10511 Class 10 | | 6 |
| 4 | 575.302.250 | Spring wheelaxle | | 1 |
| 5 | 406.100.500 | Distance bush spring wheel | | 1 |
| 6 | 468.084.150 | Guide swingarm | | 1 |
| 7 | 444.054.100 | Guide plate swingarm | | 1 |
| 8 | 816.120.350 | Bolt M12 x 35- DIN 7991 | | 1 |
| 9 | 804.120.350 | Bolt M12 x 35 - ISO 4017 | | 1 |
| 10 | 638.090.090 | Chain connector 3_8 inch 6B Simplex | | 1 |
| 11 | 631.001.680 | Chain 3/8" L=1667 | | 1 |
| 12 | 804.120.300 | Bolt M12 x 30 - ISO 4017 | | 4 |



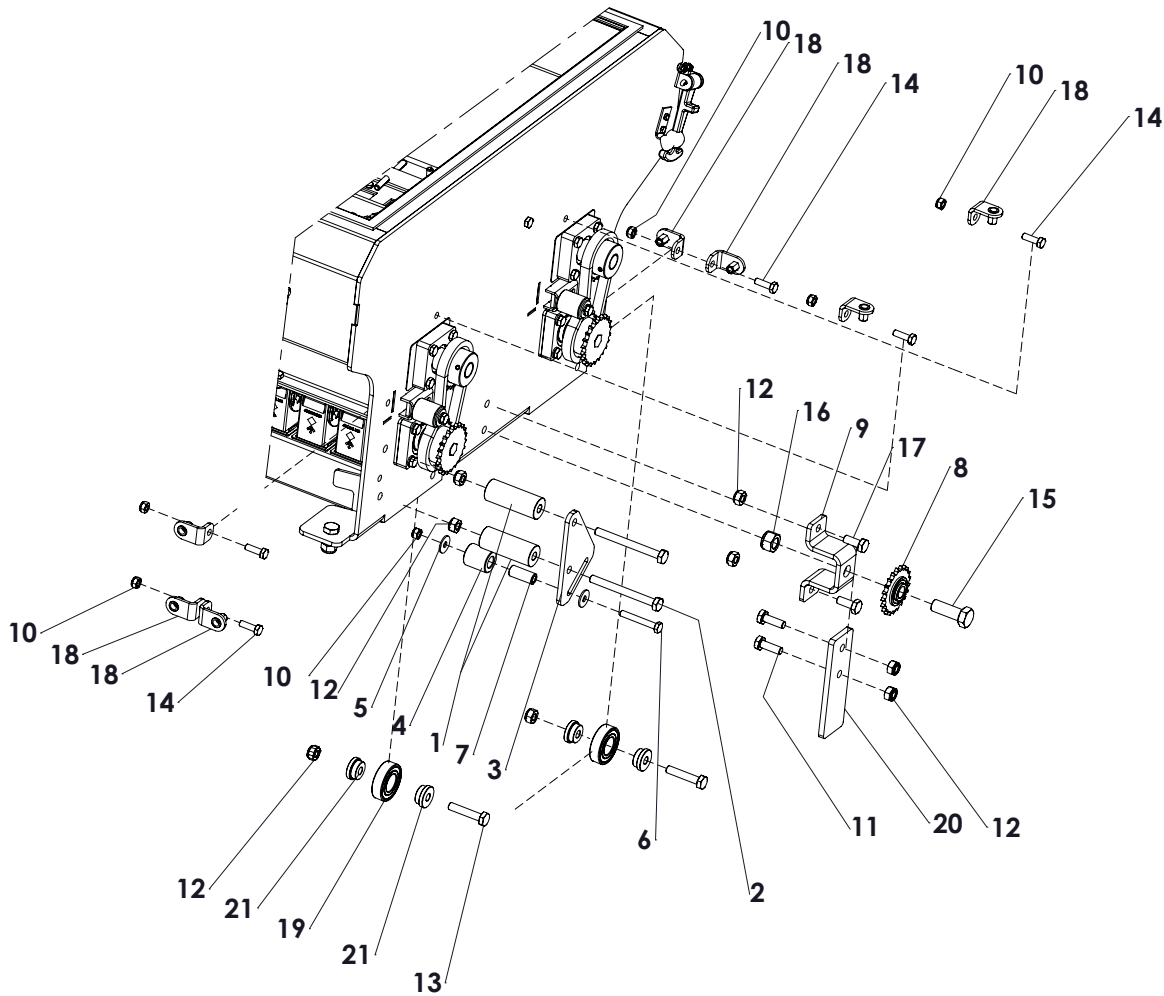
| ITEM | PART NUMBER | DESCRIPTION | REMARKS | QUA |
|------|-------------|----------------------------|---------|-----|
| 1 | 836.080.560 | Knurled knob M8x40, L=25mm | | 8 |
| 2 | 456.187.020 | Cover | | 2 |
| 3 | 456.041.011 | Cover | | 1 |
| 4 | 468.025.910 | Side cover | | 1 |
| 5 | 804.060.160 | Bolt M6 x 16 - ISO 4017 | | 3 |
| 6 | 804.050.120 | Bolt M5 x 12 - ISO 4017 | | 2 |
| 7 | 866.050.020 | Spring Washer M5 - DIN 127 | | 2 |
| 8 | 864.050.030 | Washer M5 - ISO 7089 | | 2 |
| 9 | 804.080.250 | Bolt M8 x 25 - ISO 4017 | | 4 |
| 10 | 866.080.020 | Spring Washer M8 - DIN 127 | | 4 |
| 11 | 864.080.030 | Washer M8 - ISO 7089 | | 4 |
| 12 | 866.060.020 | Spring Washer M6 - DIN 127 | | 3 |
| 13 | 569.390.780 | Counter UC300 | | 1 |



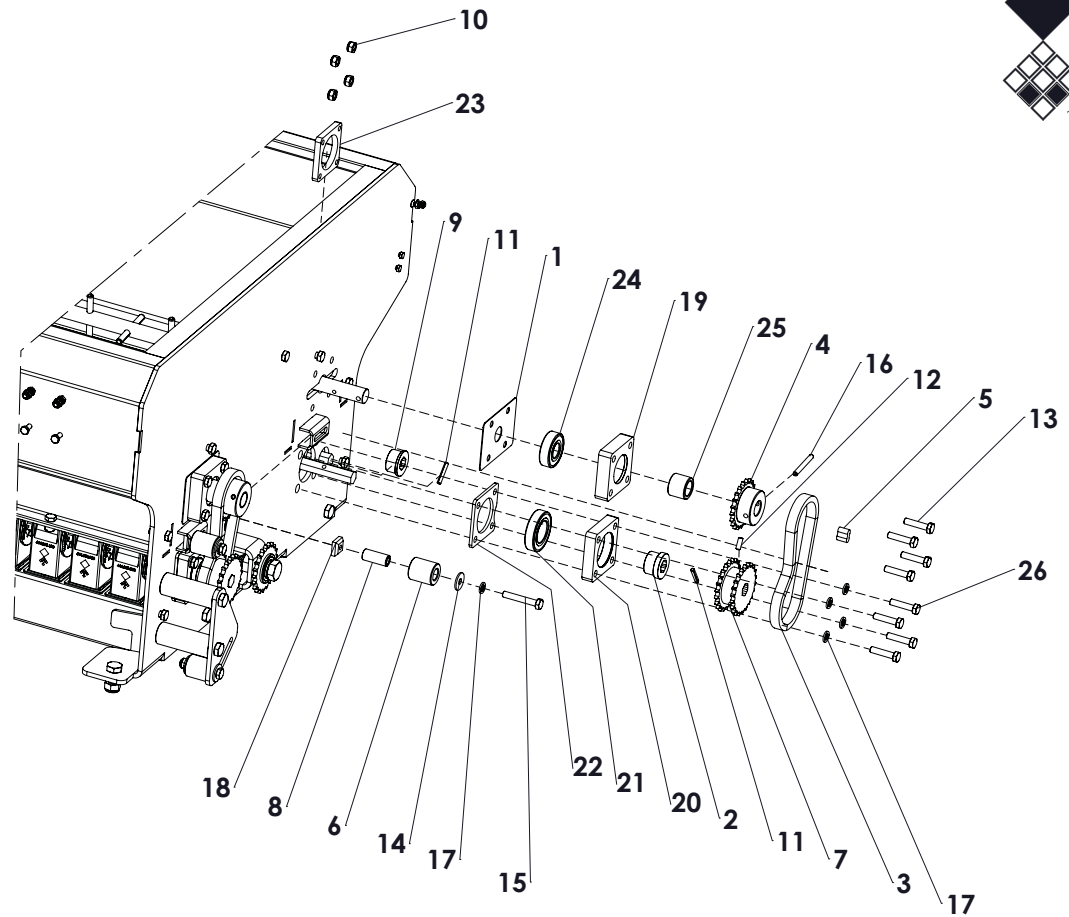
| ITEM | PART NUMBER | DESCRIPTION | REMARKS | QUA |
|------|-------------|----------------------------------|---------|-----|
| 1 | 864.060.030 | Washer M6 - ISO 7089 | | 16 |
| 2 | 830.060.060 | Self Lock Nut M6 - ISO 10511 | | 16 |
| 3 | 814.060.200 | Bolt M6 x 20 - DIN 912 | | 4 |
| 4 | 804.060.160 | Bolt M6 x 16 - ISO 4017 | | 12 |
| 5 | 804.060.250 | Bolt M6 x 25 - ISO 4017 | | 6 |
| 6 | 830.050.050 | Self Lock Nut M5 - ISO 10511 | | 8 |
| 7 | 830.080.080 | Self Lock Nut M8 - ISO 10511 | | 4 |
| 8 | 802.080.550 | Bolt M8 x 55 - ISO 4014 | | 2 |
| 9 | 802.081.200 | Bolt M8 x 120 - ISO 4014 | | 2 |
| 10 | 804.050.160 | Bolt M5 x 16 - ISO 4017 | | 4 |
| 11 | 899.100.634 | Hinge | | 3 |
| 12 | 444.151.250 | Handle | | 2 |
| 13 | 464.080.650 | Shim | | 3 |
| 14 | 571.224.852 | Gas strut L=485/stroke=200 F=500 | | 2 |
| 15 | 446.109.100 | Rubber U-seal 1-4mm L=4900mm | | 1 |
| 16 | 590.650.000 | Rubber lock assy | | 2 |
| 17 | 406.090.210 | Distance bush Ø12 / Ø9 L=21 | | 2 |
| 18 | 406.090.090 | Distance bush Ø12 / Ø9 L=9 | | 4 |
| 19 | 406.090.800 | Distance bush Ø12 / Ø9 L=80 | | 2 |
| 20 | 456.186.100 | Seeder cover | | 1 |
| 21 | 924.280.000 | Decal seed hopper | | 1 |
| 22 | 816.050.120 | Bolt M5 x 12 - DIN 7991 | | 4 |



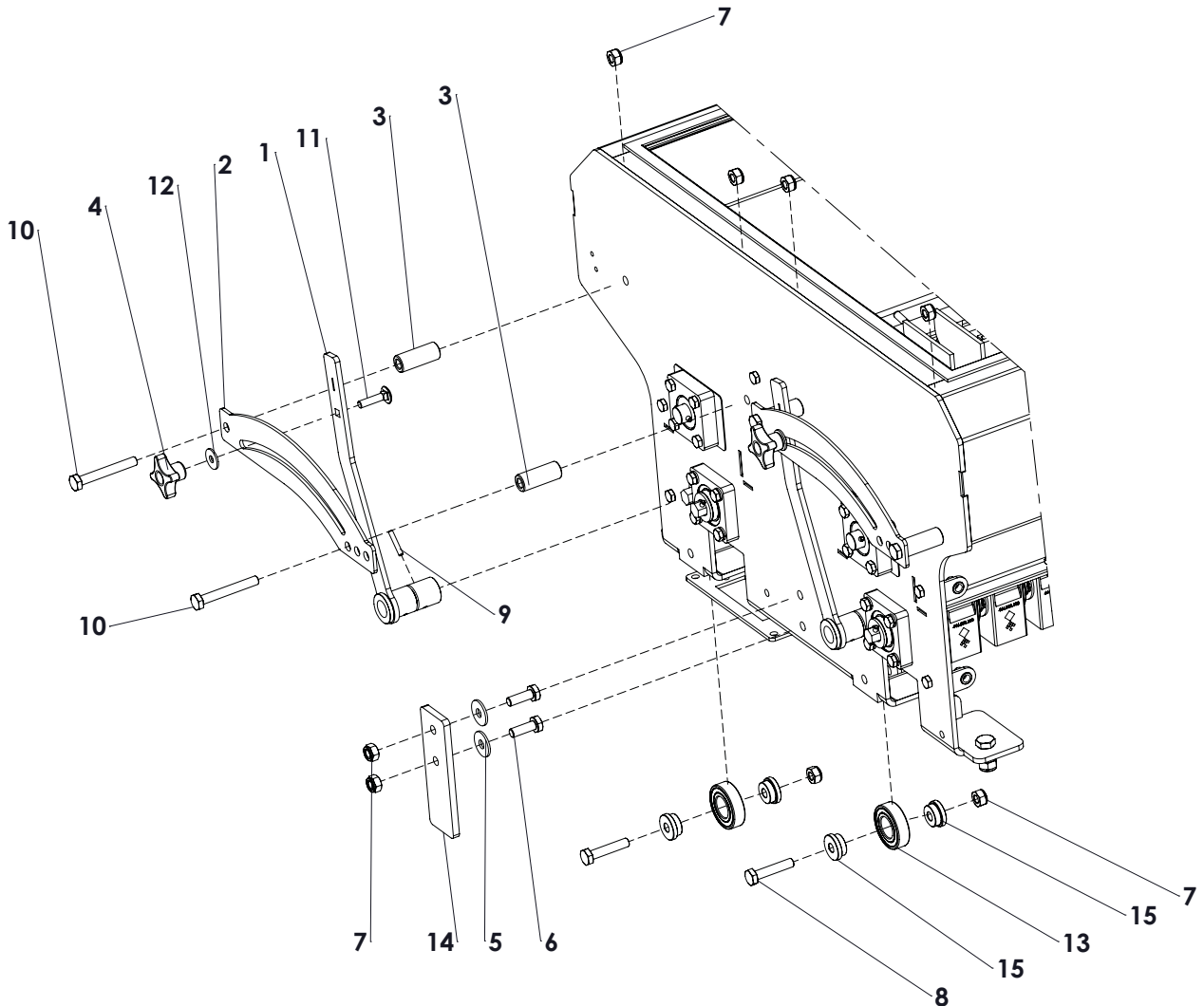
| ITEM | PART NUMBER | DESCRIPTION | REMARKS | QUA |
|------|-------------|--------------------------------|---------|-----|
| 1 | 468.049.187 | Plate rear | | 1 |
| 2 | 444.050.133 | Seed element casing | | 61 |
| 3 | 444.058.510 | Seed element rotor | | 61 |
| 4 | 444.034.760 | Seed element valve | | 61 |
| 5 | 870.032.160 | Circlip d=32 - DIN 471 | | 61 |
| 6 | 412.020.450 | Washer | | 61 |
| 7 | 830.060.060 | Self Lock Nut M6 - ISO 10511 | | 133 |
| 8 | 804.060.160 | Bolt M6 x 16 - ISO 4017 | | 133 |
| 9 | 468.049.188 | Plate | | 1 |
| 10 | 444.201.440 | Guide lock block | | 2 |
| 11 | 444.200.550 | Guide Block support | | 2 |
| 12 | 836.100.520 | Knurled knob M10x20 | | 2 |
| 13 | 494.194.016 | Funnel beam front | | 1 |
| 14 | 444.520.710 | Funnel DD overseeder | | 61 |
| 15 | 494.194.015 | Funnel beam rear | | 1 |
| 16 | 830.080.080 | Self Lock Nut M8 - ISO 10511 | | 52 |
| 17 | 866.060.020 | Spring Washer M6 - DIN 127 | | 6 |
| 18 | 804.080.160 | Bolt M8 x 16 - ISO 4017 | | 48 |
| 19 | 804.080.200 | Bolt M8 x 20 - ISO 4017 | | 4 |
| 20 | 804.060.300 | Bolt M6 x 30 - ISO 4017 | | 4 |
| 21 | 468.047.100 | Plate | | 1 |
| 22 | 494.197.117 | Hopper frame Overseeder 1830 A | | 1 |



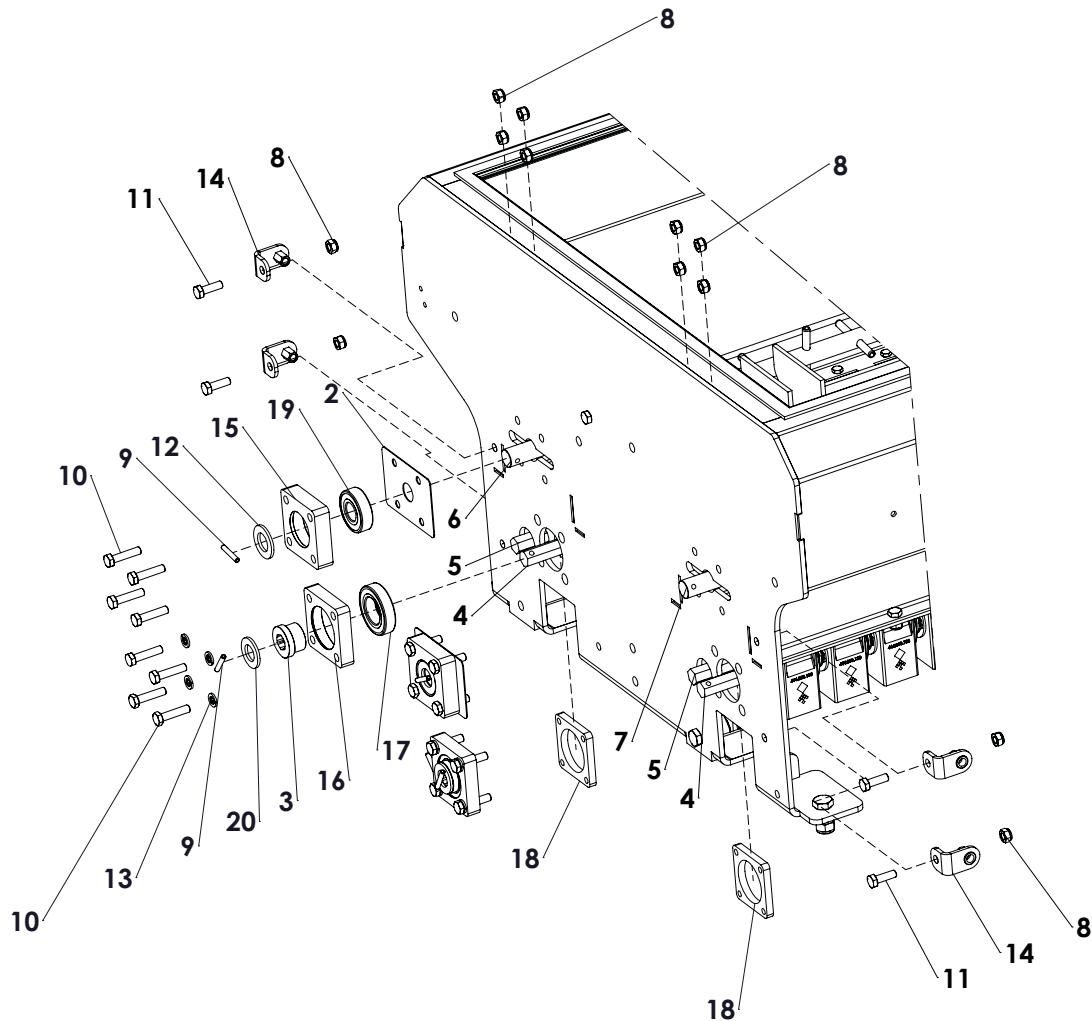
| ITEM | PART NUMBER | DESCRIPTION | REMARKS | QUA |
|------|-------------|--------------------------------------|---------|-----|
| 1 | 406.110.770 | Spacer | | 2 |
| 2 | 802.101.000 | Bolt M10 x 100 - ISO 4014 | | 2 |
| 3 | 470.061.442 | Support plate | | 1 |
| 4 | 444.160.350 | Roller | | 1 |
| 5 | 864.080.024 | Large washer M8 - DIN 9021 | | 2 |
| 6 | 802.080.550 | Bolt M8 x 55 - ISO 4014 | | 1 |
| 7 | 406.090.350 | Distance bush Ø15/Ø8.5 L=35 | | 1 |
| 8 | 638.000.690 | Chain spanner 3/8" z=21 | | 1 |
| 9 | 468.040.304 | Bracket | | 1 |
| 10 | 830.080.080 | Self Lock Nut M8 - ISO 10511 | | 6 |
| 11 | 804.100.300 | Bolt M10 x 30 - ISO 4017 | | 2 |
| 12 | 830.100.100 | Self Lock Nut M10 - ISO 10511 | | 8 |
| 13 | 802.100.500 | Bolt M10 x 50 - ISO 4014 | | 2 |
| 14 | 804.080.250 | Bolt M8 x 25 - ISO 4017 | | 5 |
| 15 | 804.160.450 | Bolt M16 x 45 - ISO 4017 | | 1 |
| 16 | 830.160.160 | Self Lock Nut M16-ISO 10511 Class 10 | | 1 |
| 17 | 804.100.250 | Bolt M10 x 25 - ISO 4017 | | 2 |
| 18 | 464.040.430 | Bracket | | 6 |
| 19 | 713.250.150 | Bearing 6205-LLU | | 2 |
| 20 | 464.081.504 | End strip | | 1 |
| 21 | 404.100.136 | Bearing Bush | | 4 |



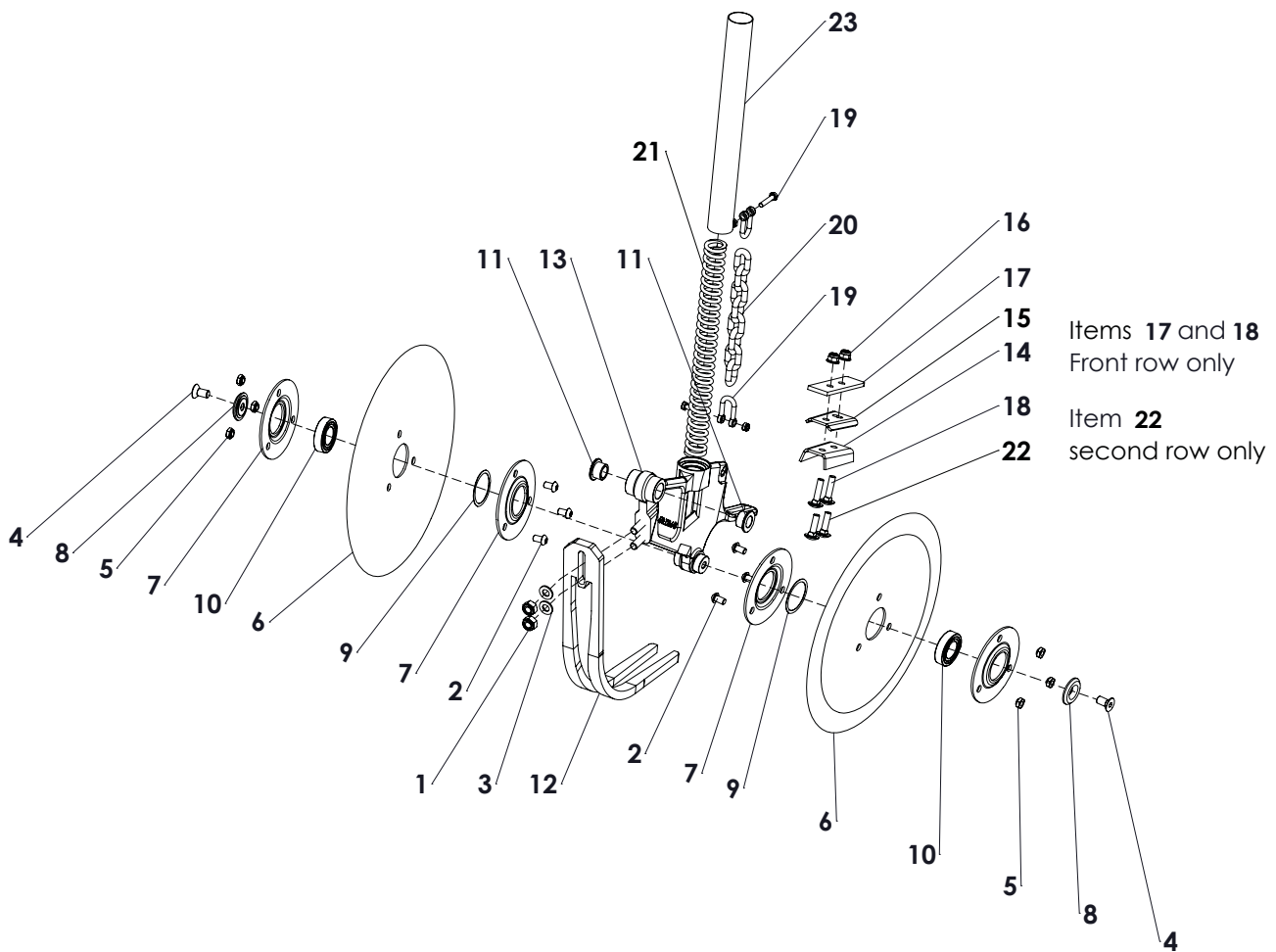
| ITEM | PART NUMBER | DESCRIPTION | REMARKS | QUA |
|------|-------------|-------------------------------------|---------|-----|
| 1 | 468.011.002 | Cover plate | | 2 |
| 2 | 410.160.182 | Bush | | 2 |
| 3 | 631.000.440 | Chain 3/8", L=429 | | 2 |
| 4 | 635.000.694 | Sprocket 3/8"(06B) simplex 21Z | | 2 |
| 5 | 638.090.090 | Chain connector 3_8 inch 6B Simplex | | 2 |
| 6 | 444.160.350 | Roller | | 2 |
| 7 | 638.000.360 | Chainwheel weldment | | 2 |
| 8 | 406.090.350 | Distance bush Ø15/Ø8.5 L=35 | | 2 |
| 9 | 410.160.180 | Bush | | 4 |
| 10 | 830.080.080 | Self Lock Nut M8 - ISO 10511 | | 8 |
| 11 | 878.050.300 | Roll pin Ø5x30 | | 4 |
| 12 | 818.060.160 | Set screw M6 x 16 Din 913 | | 2 |
| 13 | 802.080.350 | Bolt M8 x 35 - ISO 4014 | | 8 |
| 14 | 864.080.024 | Large washer M8 - DIN 9021 | | 2 |
| 15 | 802.080.500 | Bolt M8 x 50 - ISO 4014 | | 2 |
| 16 | 878.060.500 | Roll Pin 6 x 50 - ISO 8752 | | 2 |
| 17 | 866.080.020 | Spring Washer M8 - DIN 127 | | 10 |
| 18 | 464.080.200 | Square nut | | 2 |
| 19 | 468.180.704 | Bearing block | | 4 |
| 20 | 468.150.704 | Bearing block | | 4 |
| 21 | 713.300.130 | Bearing 6006 LLU | | 4 |
| 22 | 468.040.702 | Plate | | 2 |
| 23 | 468.080.640 | Contra plate | | 2 |
| 24 | 713.200.140 | Bearing 6204-C-2HRS | | 2 |
| 25 | 406.200.240 | Distance bush Ø30/Ø20.2 L=24.5 | | 2 |
| 26 | 804.080.350 | Bolt M8 x 35 - ISO 4017 | | 8 |



| ITEM | PART NUMBER | DESCRIPTION | REMARKS | QUA |
|------|-------------|-------------------------------|---------|-----|
| 1 | 464.063.134 | Valve adjustment | | 2 |
| 2 | 464.041.752 | Guide strip | | 2 |
| 3 | 406.110.500 | Distance bush Ø20/Ø10.5 L=50 | | 4 |
| 4 | 836.080.260 | Knob M8 - Din 6335 | | 2 |
| 5 | 864.100.031 | Large washer M10 - DIN 9021 | | 2 |
| 6 | 804.100.300 | Bolt M10 x 30 - ISO 4017 | | 2 |
| 7 | 830.100.100 | Self Lock Nut M10 - ISO 10511 | | 8 |
| 8 | 802.100.500 | Bolt M10 x 50 - ISO 4014 | | 2 |
| 9 | 878.050.300 | Roll pin Ø5x30 | | 1 |
| 10 | 802.100.750 | Bolt M10 x 75 - ISO 4014 | | 4 |
| 11 | 820.080.350 | MH Bolt M8 x 35 ISO 8677 | | 2 |
| 12 | 864.080.024 | Large washer M8 - DIN 9021 | | 2 |
| 13 | 713.250.150 | Bearing 6205-LLU | | 2 |
| 14 | 464.081.504 | End strip | | 1 |
| 15 | 404.100.136 | Bearing Bush | | 4 |



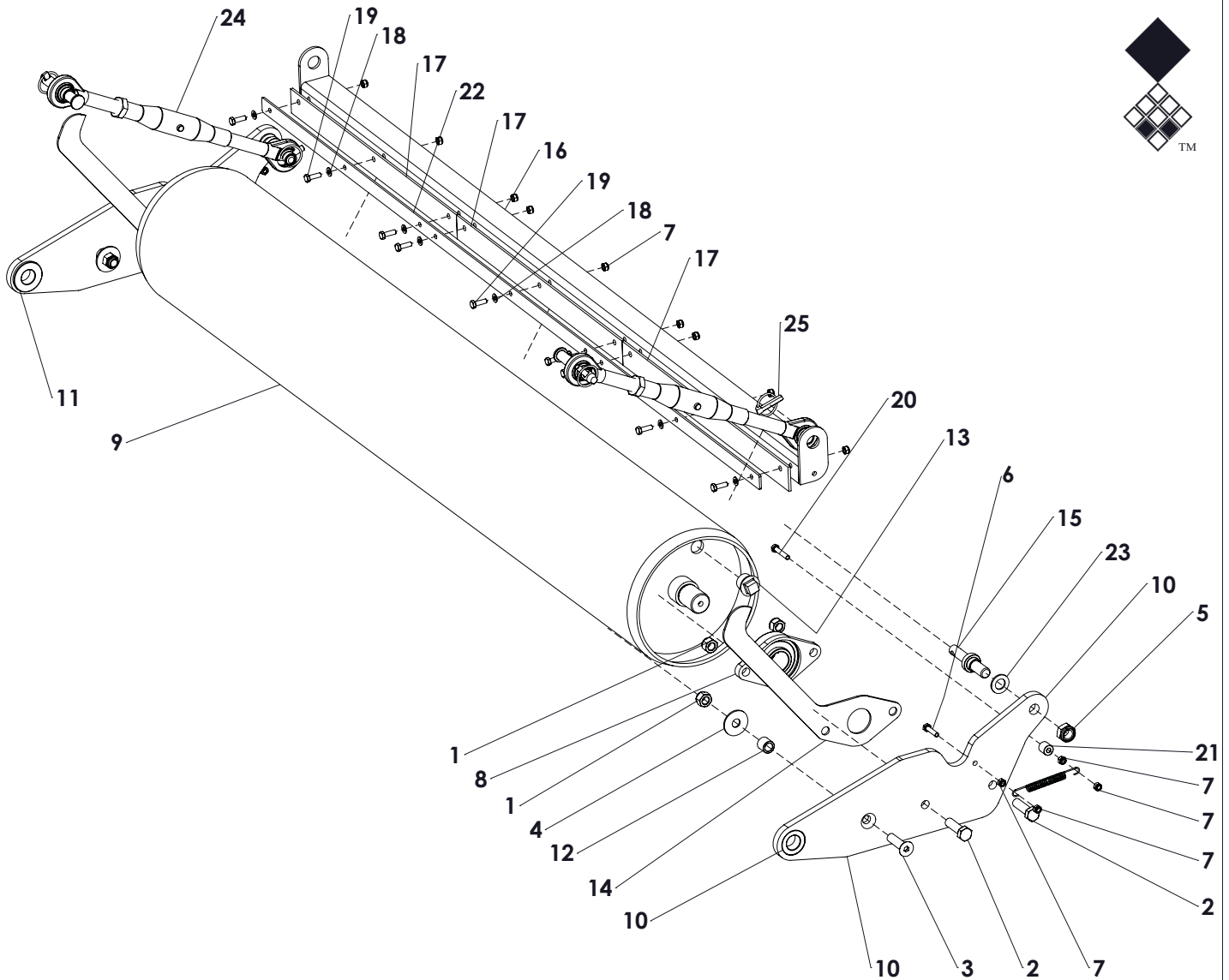
| ITEM | PART NUMBER | DESCRIPTION | REMARKS | QUA |
|------|-------------|------------------------------|---------|-----|
| 1 | 830.080.080 | Self Lock Nut M8 - ISO 10511 | | 12 |
| 2 | 468.011.002 | Cover plate | | 2 |
| 3 | 410.160.182 | Bush | | 2 |
| 4 | 422.169.198 | Shaft | | 2 |
| 5 | 422.169.191 | Shaft | | 2 |
| 6 | 474.809.198 | Agitator shaft rear | | 1 |
| 7 | 474.809.196 | Agitator shaft front | | 1 |
| 8 | 830.080.080 | Self Lock Nut M8 - ISO 10511 | | 12 |
| 9 | 878.050.300 | Roll pin Ø5x30 | | 4 |
| 10 | 802.080.350 | Bolt M8 x 35 - ISO 4014 | | 16 |
| 11 | 804.080.250 | Bolt M8 x 25 - ISO 4017 | | 4 |
| 12 | 864.200.030 | Washer M20 - ISO 7089 | | 2 |
| 13 | 866.080.020 | Spring Washer M8 - DIN 127 | | 8 |
| 14 | 464.040.430 | Bracket | | 4 |
| 15 | 468.180.704 | Bearing block | | 4 |
| 16 | 468.150.704 | Bearing block | | 2 |
| 17 | 713.300.130 | Bearing 6006 LLU | | 2 |
| 18 | 468.080.640 | Contra plate | | 2 |
| 19 | 713.200.140 | Bearing 6204-C-2HRS | | 2 |
| 20 | 864.180.030 | Washer M18 - ISO 7089 | | 2 |



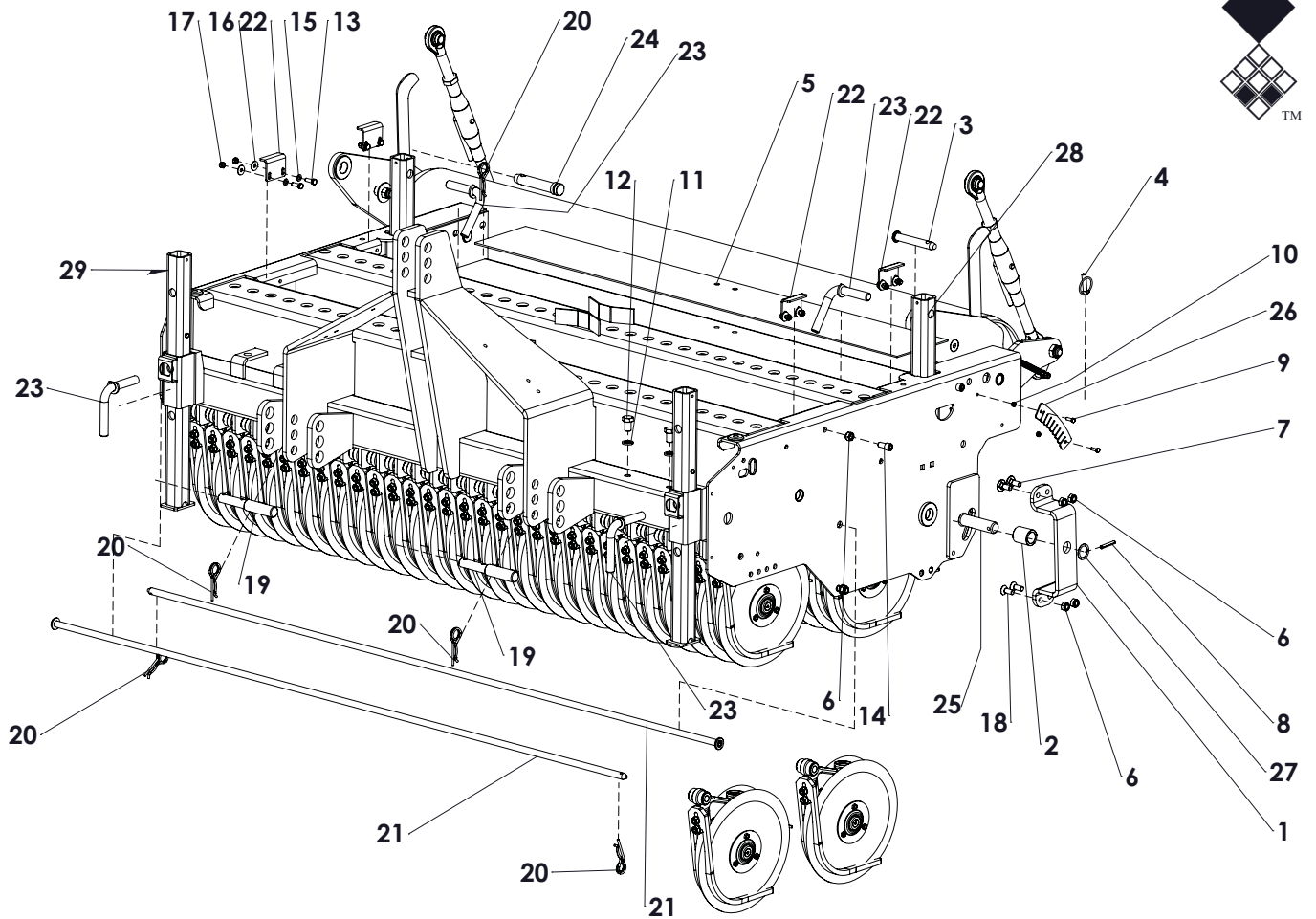
Items 17 and 18
Front row only

Item 22
second row only

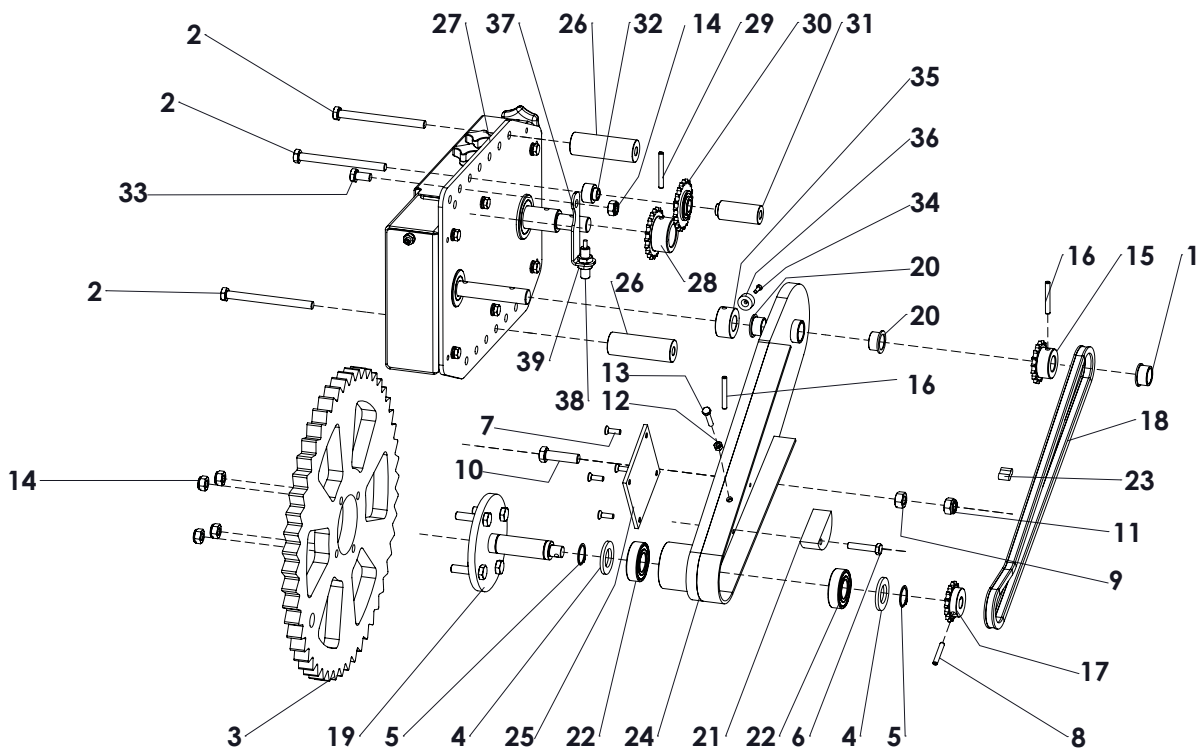
| ITEM | PART NUMBER | DESCRIPTION | REMARKS | QUA |
|------|-------------|---|-----------------|-----|
| 1 | 830.100.100 | Self Lock Nut M10 - ISO 10511 | | 2 |
| 2 | 814.080.140 | Bolt M8 x 14 - ISO 7380 | | 6 |
| 3 | 864.100.030 | Washer M10 - ISO 7089 | | 2 |
| 4 | 816.100.202 | Bolt M10 x 20 -10,9 DIN 7991 | | 2 |
| 5 | 844.080.650 | M8 KALEI nut | | 6 |
| 6 | 468.023.202 | Cutting disk Ø320 | | 2 |
| 7 | 468.031.104 | Center plate | | 4 |
| 8 | 410.100.070 | Lock bush Ø38 | | 2 |
| 9 | 406.420.010 | Shim 50x42 D=0.5mm | | 2 |
| 10 | 713.250.120 | Bearing 6005-LLU | | 2 |
| 11 | 442.160.150 | Bearing bush | | 2 |
| 12 | 468.123.260 | Cutting guide | | 1 |
| 13 | 470.123.640 | Seeding element | | 1 |
| 14 | 444.020.750 | Rubber scraper | | 1 |
| 15 | 468.030.752 | Scraper strip | | 1 |
| 16 | 830.080.085 | Self lock nut M8 - ISO 7043 | | 2 |
| 17 | 464.051.120 | Strip | Front row only | 1 |
| 18 | 820.080.350 | MH Bolt M8 x 35 ISO 8677 | Front row only | 2 |
| 19 | 846.060.241 | D-Shackle d=6mm | | 2 |
| 20 | 899.082.000 | Chain seeding element 8-links D=8mm L=200 (±7.9") | | 1 |
| 21 | 438.303.386 | Spring DDOS A | | 1 |
| 22 | 820.080.300 | MH Bolt M8 x 30 ISO 8677 | Second row only | 2 |
| 23 | 444.403.200 | Spring hose L=320mm | | 1 |



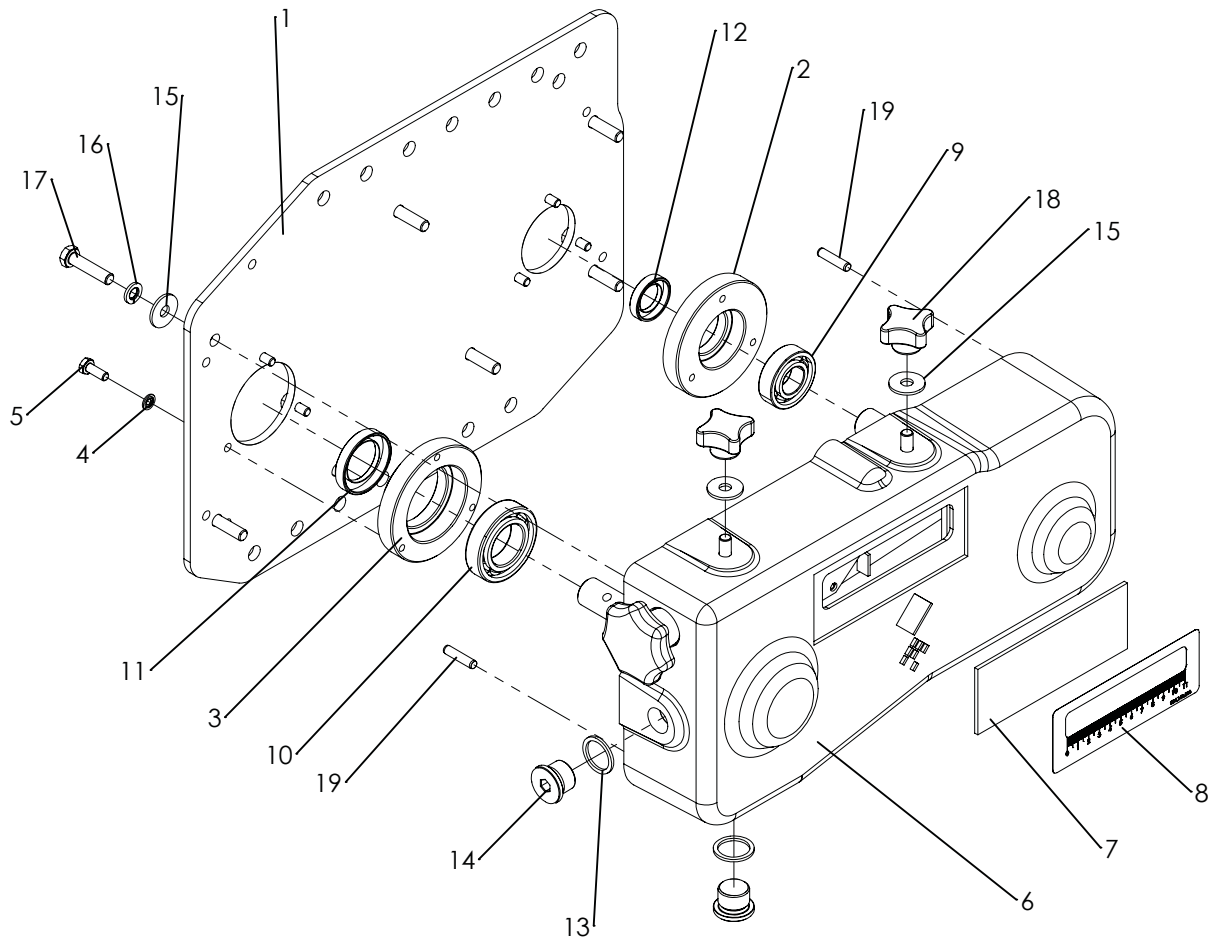
| ITEM | PART NUMBER | DESCRIPTION | REMARKS | QUA |
|------|-------------|--|---------|-----|
| 1 | 830.160.160 | Self Lock Nut M16-ISO 10511 Class 10 | | 6 |
| 2 | 802.160.550 | Bolt M16 x 55 | | 4 |
| 3 | 816.160.600 | Bolt M16 x 60 - DIN 7991 | | 2 |
| 4 | 864.160.031 | Large washer M16 - DIN 9021 | | 2 |
| 5 | 830.200.200 | Self Lock Nut M20 Din 985 h=17 | | 2 |
| 6 | 804.080.350 | Bolt M8 x 35 - ISO 4017 | | 2 |
| 7 | 830.080.080 | Self Lock Nut M8 - ISO 10511 | | 14 |
| 8 | 742.400.520 | Bearing UCFL 208 | | 2 |
| 9 | 488.273.190 | Rear roller | | 1 |
| 10 | 470.155.104 | Roller arm left | | 1 |
| 11 | 470.155.106 | Roller arm right | | 1 |
| 12 | 406.160.202 | Distance bush Ø24 / Ø16.2 L=22 | | 2 |
| 13 | 856.303.000 | Plug M30x1.5 | | 1 |
| 14 | 468.044.510 | Indicator strip | | 2 |
| 15 | 418.351.350 | Pin | | 2 |
| 16 | 466.059.191 | Rear roller scraper | | 1 |
| 17 | 444.056.300 | Scraper plate | | 3 |
| 18 | 864.080.030 | Washer M8 - ISO 7089 | | 9 |
| 19 | 804.080.250 | Bolt M8 x 25 - ISO 4017 | | 9 |
| 20 | 804.080.450 | Bolt M8 x 45 - ISO 4017 | | 2 |
| 21 | 402.080.220 | Bush Ø20/Ø8.5 L=20 | | 2 |
| 22 | 468.049.189 | Lock strip | | 1 |
| 23 | 864.200.030 | Washer M20 - ISO 7089 | | 2 |
| 24 | 522.194.370 | Toplink Cat. 1 L0=370 Stroke=200 M24x3 | | 2 |
| 25 | 523.100.570 | Linch Pin d10 | | 4 |
| 26 | | Sheet | | - |



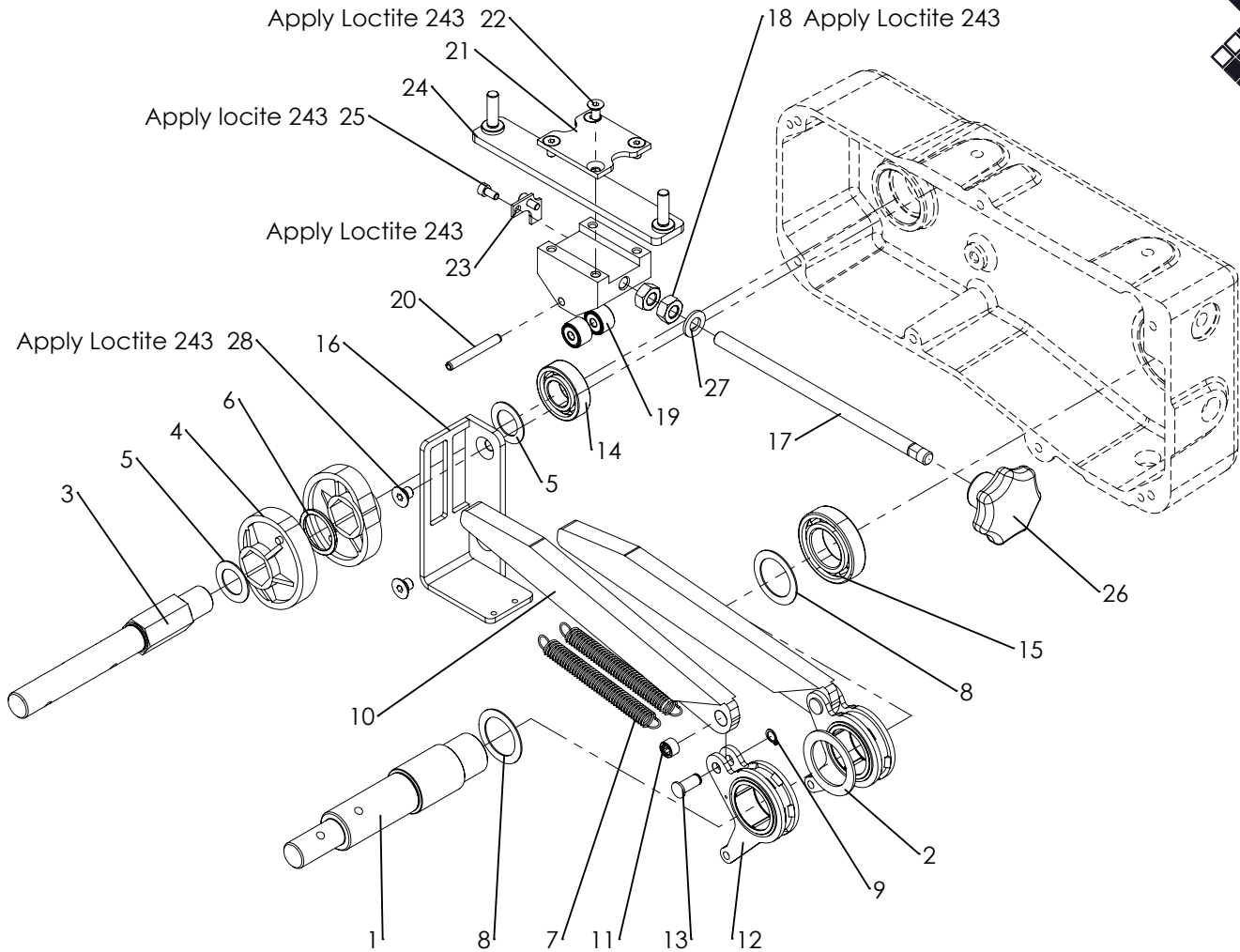
| ITEM | PART NUMBER | DESCRIPTION | REMARKS | QUA |
|------|-------------|--|---------|-----|
| 1 | 468.103.150 | Bracket | | 2 |
| 2 | 402.290.450 | Bush | | 2 |
| 3 | 521.191.300 | Top Link Pin Ø19 L=105 | | 2 |
| 4 | 523.100.570 | Linch Pin d10 | | 4 |
| 5 | 446.049.161 | Rubber grip plate | | 1 |
| 6 | 830.120.120 | Self Lock Nut M12 - ISO 10511 Class 10 | | 8 |
| 7 | 820.120.300 | MH Bolt M12 x 30 ISO 8677 | | 4 |
| 8 | 878.080.500 | Roll Pin 8 x 50 - ISO 8752 | | 2 |
| 9 | 804.060.200 | Bolt M6 x 20 - ISO 4017 | | 4 |
| 10 | 830.060.060 | Self Lock Nut M6 - ISO 10511 | | 4 |
| 11 | 866.160.020 | Spring Washer M16 - DIN 127 | | 2 |
| 12 | 804.160.250 | Bolt M16 x 25 - ISO 4017 | | 2 |
| 13 | 804.080.250 | Bolt M8 x 25 - ISO 4017 | | 9 |
| 14 | 814.120.250 | Bolt M12 x 25 - DIN 912 | | 4 |
| 15 | 864.080.030 | Washer M8 - ISO 7089 | | 8 |
| 16 | 864.080.024 | Large washer M8 - DIN 9021 | | 8 |
| 17 | 830.080.080 | Self Lock Nut M8 - ISO 10511 | | 8 |
| 18 | 816.120.300 | Bolt M12 x 30 - DIN 7991 | | 4 |
| 19 | 521.221.600 | 3-point pin | | 2 |
| 20 | 523.051.000 | R-clip Round 5, DIN 11024 | | 5 |
| 21 | 474.169.190 | Seeding element shaft | | 2 |
| 22 | 468.040.700 | Lock bracket | | 4 |
| 23 | 474.201.320 | Lock pin | | 4 |
| 24 | 521.221.150 | Top link pin Cat. 2 - 25,4 x 103 | | 1 |
| 25 | 418.291.080 | Pin Ø28.5 -Ø35 L=108 | | 2 |
| 26 | 468.031.610 | Indicator | | 2 |
| 27 | 868.040.100 | Shim Ø30xØ40x1.0 DIN988 | | 2 |
| 28 | 462.050.770 | Rear leg overseeder | | 2 |
| 29 | 462.050.655 | Leg overseeder | | 2 |



| ITEM | PART NUMBER | DESCRIPTION | REMARKS | QUA |
|------|-------------|--|---------|-----|
| 1 | 442.200.150 | Bearing bush gearaxle | | 1 |
| 2 | 802.101.200 | Bolt M10 x 120 - ISO 4014 | | 3 |
| 3 | 468.204.202 | Drive wheel | | 1 |
| 4 | 864.240.044 | Washer M24 - ISO 7089 | | 2 |
| 5 | 870.025.120 | Circlip d=25 - DIN 471 | | 2 |
| 6 | 802.080.400 | Bolt M8 x 40 - ISO 4014 | | 1 |
| 7 | 816.060.200 | Bolt M6 x 20 - DIN 7991 | | 4 |
| 8 | 878.060.350 | Roll Pin 6 x 35 - ISO 8752 | | 1 |
| 9 | 826.120.120 | Nut M12 - DIN 934 | | 1 |
| 10 | 802.120.450 | Bolt M12 x 45 ISO 4014 Class 10.9 | | 1 |
| 11 | 830.120.120 | Self Lock Nut M12 - ISO 10511 Class 10 | | 1 |
| 12 | 826.060.060 | Nut M6 - DIN 934 | | 1 |
| 13 | 804.060.300 | Bolt M6 x 30 - ISO 4017 | | 1 |
| 14 | 830.100.100 | Self Lock Nut M10 - ISO 10511 | | 5 |
| 15 | 635.000.572 | Sprocket 3/8" (06B) simplex 17Z | | 1 |
| 16 | 878.060.450 | Roll Pin 6 x 45 - ISO 8752 | | 2 |
| 17 | 635.000.540 | Sprocket 3/8" (06B) simplex 16Z | | 1 |
| 18 | 631.000.978 | Chain 3/8" Simplex L=978 | | 1 |
| 19 | 474.251.400 | Wheel hub | | 1 |
| 20 | 442.200.152 | Bearing bush swingarm | | 2 |
| 21 | 444.250.600 | Chain tensioner | | 1 |
| 22 | 713.250.150 | Bearing 6205-LLU | | 2 |
| 23 | 638.090.090 | Chain connector 3_8 inch 6B Simplex | | 1 |
| 24 | 466.155.000 | Frame swingarm | | 1 |
| 25 | 444.051.000 | Guide plate swingarm | | 1 |
| 26 | 406.110.880 | Bush | | 2 |
| 27 | 623.246.405 | Gearbox seeder | | 1 |
| 28 | 635.000.680 | Sprocket 3/8" (06B) simplex 21Z | | 1 |
| 29 | 878.060.500 | Roll Pin 6 x 50 - ISO 8752 | | 1 |
| 30 | 638.000.690 | Chain spanner 3/8" z=21 | | 1 |
| 31 | 404.100.570 | Bush | | 1 |
| 32 | 404.110.130 | Bush | | 1 |
| 33 | 804.100.200 | Bolt M10 x 20 - ISO 4017 | | 1 |
| 34 | 816.040.160 | Bolt M4 x 16 - DIN 7991 | | 1 |
| 35 | 406.200.204 | Magnet bush | | 1 |
| 36 | 569.200.100 | Magnet | | 1 |
| 37 | 468.030.980 | Sensor bracket | | 1 |
| 38 | 569.100.430 | Magnetic sensor D10 + cable | | 1 |
| 39 | 826.120.600 | Low nut M12 | | 1 |

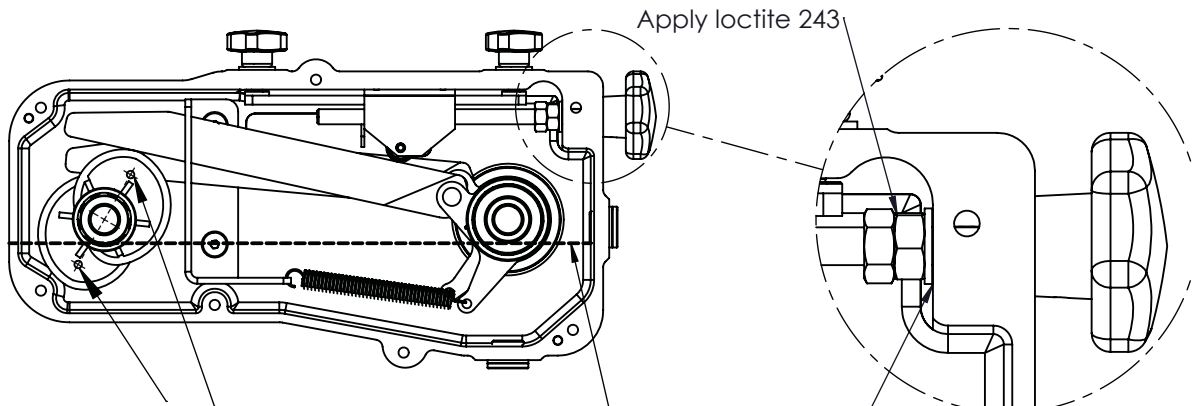


| ITEM | PART NUMBER | DESCRIPTION | REMARKS | QUA |
|------|-------------|--------------------------------|---------|-----|
| 1 | 468.064.060 | Lid plate | | 1 |
| 2 | 434.210.850 | Bearing hub Ø42 | | 1 |
| 3 | 434.230.850 | Bearing hub Ø55 | | 1 |
| 4 | 874.060.020 | Bonded seal ring M6 | | 6 |
| 5 | 804.060.160 | Bolt M6 x 16 - ISO 4017 | | 6 |
| 6 | 448.380.800 | Casted gearbox housing | | 1 |
| 7 | 444.021.380 | Window | | 1 |
| 8 | 934.140.510 | Gauge decall | | 1 |
| 9 | 711.200.120 | Bearing 6004 | | 2 |
| 10 | 711.300.132 | Bearing 6006 | | 2 |
| 11 | 762.300.080 | Oil seal 30-45-8 | | 1 |
| 12 | 762.200.070 | Oil seal 20-32-7 | | 1 |
| 13 | 874.210.020 | Copper washer 1_2 | | 2 |
| 14 | 549.210.200 | Blind plug G1/2 | | 2 |
| 15 | 864.080.024 | Large washer M8 - DIN 9021 | | 9 |
| 16 | 866.080.020 | Spring Washer M8 - DIN 127 | | 7 |
| 17 | 804.080.350 | Bolt M8 x 35 - ISO 4017 | | 7 |
| 18 | 836.080.402 | Closed Knob M8 - Din 6335 | | 2 |
| 19 | 876.060.260 | Parallel pin ISO 8734 - 6 x 26 | | 2 |
| | 623.200.400 | Gearbox complete | | |



| ITEM | PART NUMBER | DESCRIPTION | REMARKS | QUA |
|------|-------------|----------------------------|---------------------------------|-----|
| 1 | 422.351.382 | Shaft | | 1 |
| 2 | 444.020.500 | Washer | | 1 |
| 3 | 422.242.020 | Shaft | | 1 |
| 4 | 444.200.730 | Excenter | | 2 |
| 5 | 868.032.100 | Shim Ø20xØ32x1.0 DIN988 | Quantity depending on clearance | |
| 6 | 406.280.030 | Spacer | | 1 |
| 7 | 575.010.800 | Spring | | 2 |
| 8 | 868.042.100 | Shim Ø30xØ42x1.0 DIN988 | Quantity depending on clearance | |
| 9 | 870.008.080 | Circlip d=8 - DIN 471 | | 2 |
| 10 | 464.152.702 | Rocker strip | | 2 |
| 11 | 721.080.080 | Bearing HK0808 | | 2 |
| 12 | 442.200.980 | Rocker arm assembly | | 2 |
| 13 | 418.080.200 | Pin | | 2 |
| 14 | 711.200.120 | Bearing 6004 | | 1 |
| 15 | 711.300.132 | Bearing 6006 | | 1 |
| 16 | 470.120.550 | Guide | | 1 |
| 17 | 852.102.100 | Threaded rod M10x210 | | 1 |
| 18 | 826.100.100 | Nut M10 - DIN 934 | | 2 |
| 19 | 721.060.120 | Roller bearing | | 2 |
| 20 | 878.060.500 | Roll Pin 6 x 50 - ISO 8752 | | 1 |
| 21 | 468.040.530 | Lock plate | | 1 |
| 22 | 816.060.122 | Bolt M6 x 12 - DIN 7991 | | 4 |
| 23 | 468.020.490 | Indicator | | 1 |
| 24 | 468.061.620 | Slider bracket | | 1 |
| 25 | 814.050.100 | DIN 912 M5 x 10 --- 10C | | 2 |
| 26 | 836.100.630 | Knob M10 with set screw | | 1 |
| 27 | 864.100.030 | Washer M10 - ISO 7089 | | 1 |
| 28 | 816.080.100 | Bolt M8 x 10 - DIN 7991 | | 2 |

Timing, Spindle adjustment and Oil level



Apply loctite 243

Keep $\pm 2\text{mm}$ (0.08") clearance distance between washer and casing! Adjustment must rotate smooth.

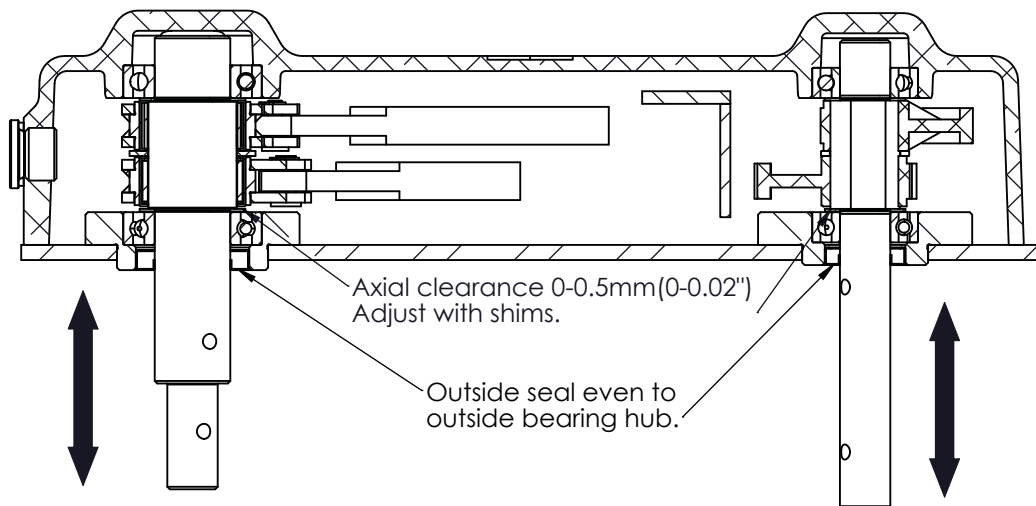
Warning! Make sure the excenters are positioned correct:

- The nodge has to be faced outwards.
- Timing: 180° shifted from each other

If not correctly installed a shocked rotation will occur at the output shaft.

Fill gearbox with $\pm 1,4\text{L}$ (0.37gal.) 80W90 oil
Fill till oil level line (Bottom level plug)

Axial clearance

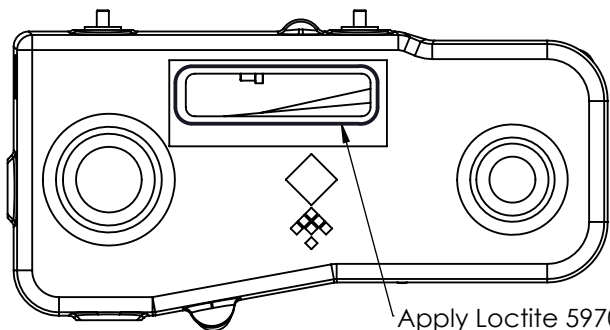


Axial clearance 0-0.5mm (0-0.02")
Adjust with shims.

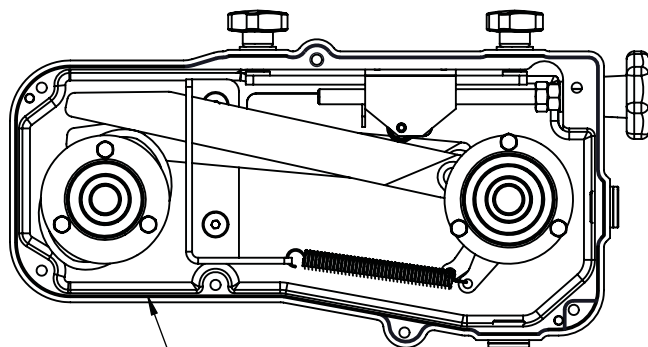
Outside seal even to outside bearing hub.

Sealing plan

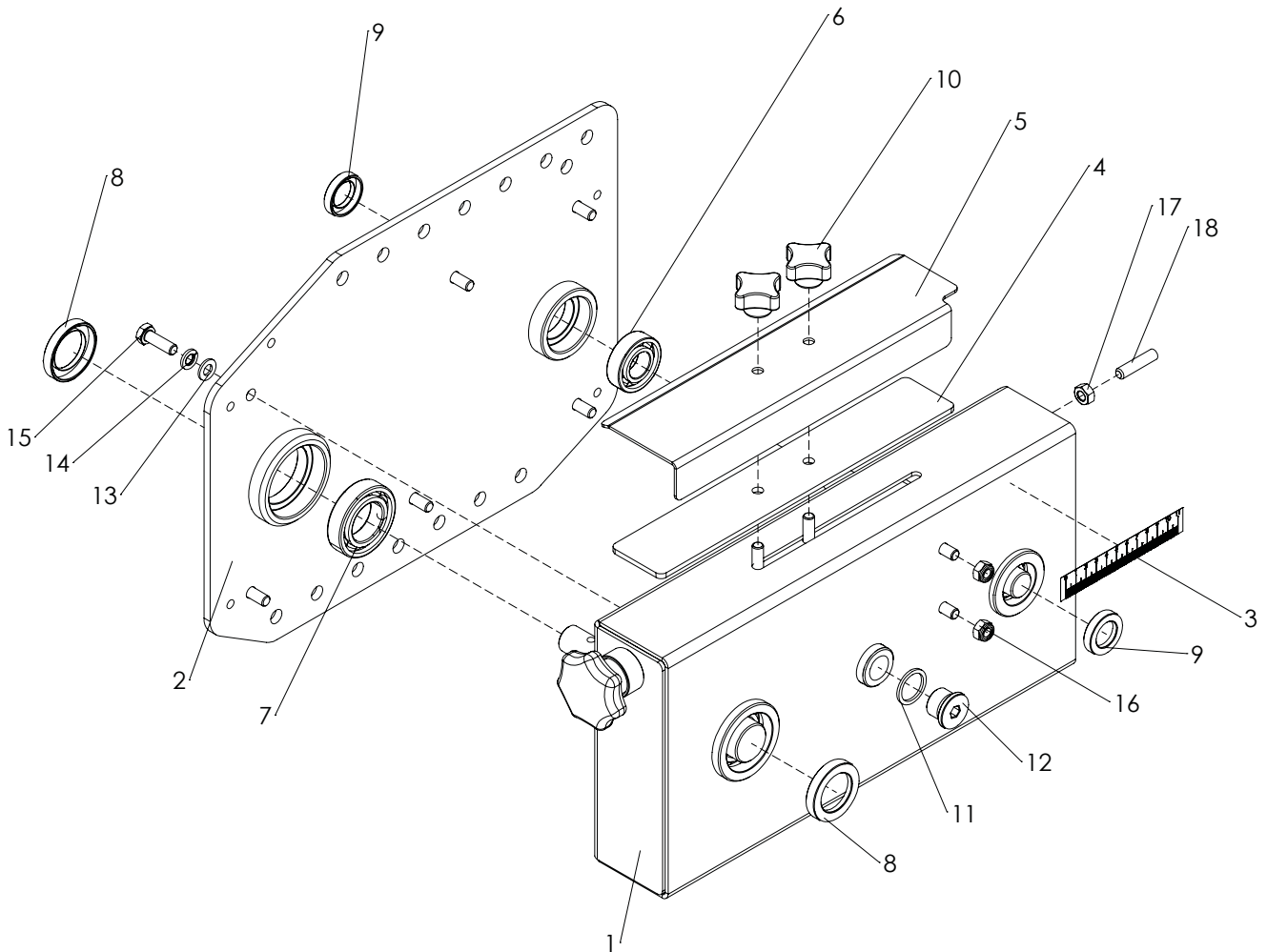
1. Put sealing paste (Loctite 5970) on the gearbox housing according to the closed line as shown on the pictures below.
2. Make sure to put sealing paste around the threaded holes.
3. Make sure to clean the edges from excess sealant.



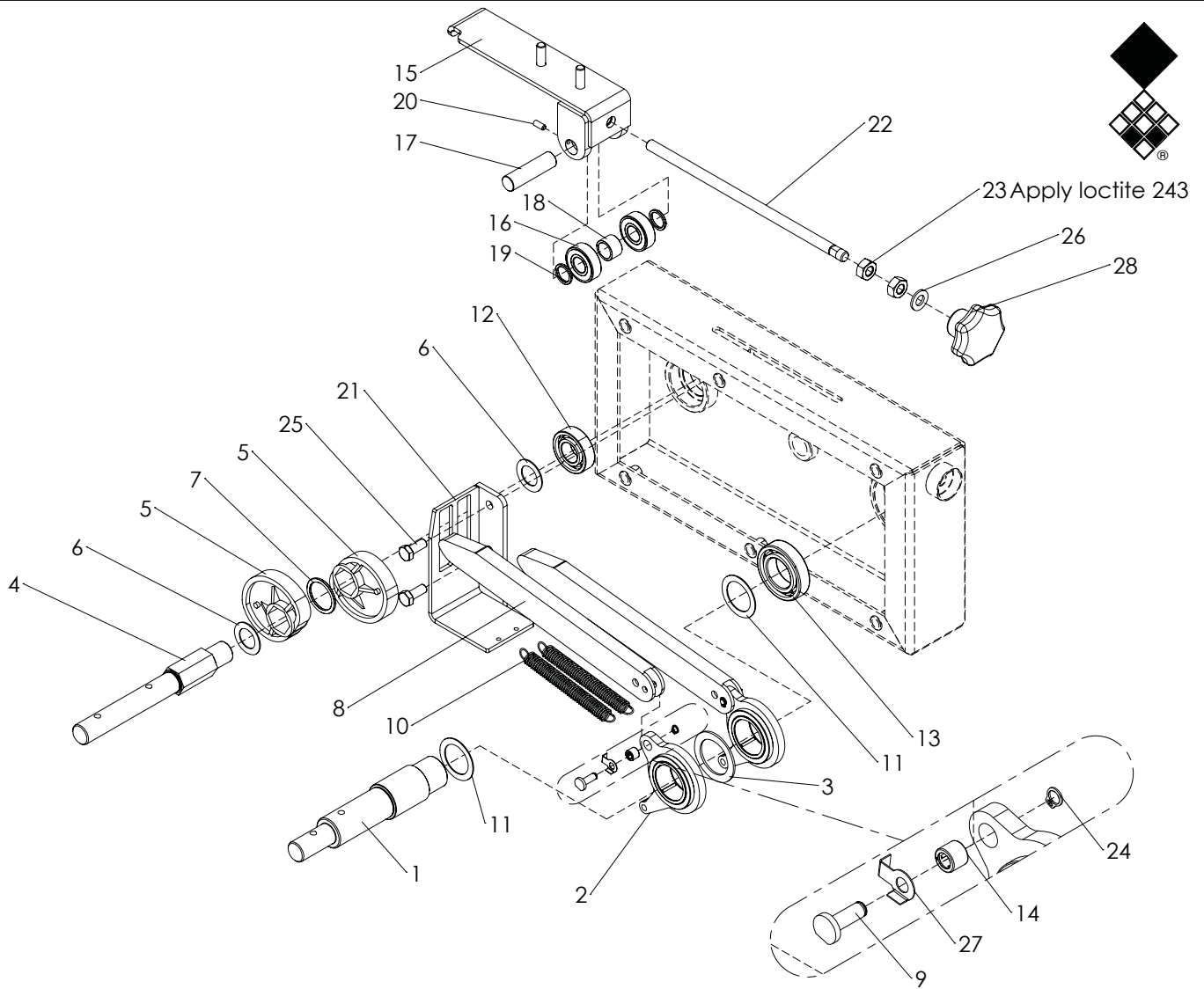
Apply Loctite 5970 (acid free sealing paste)



Apply Loctite 5970 (acid free sealing paste)



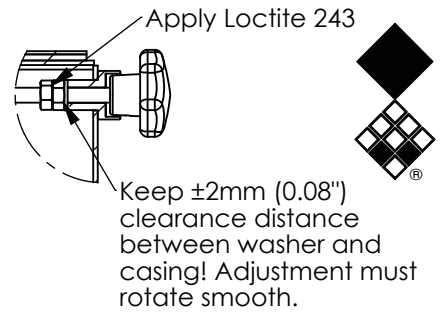
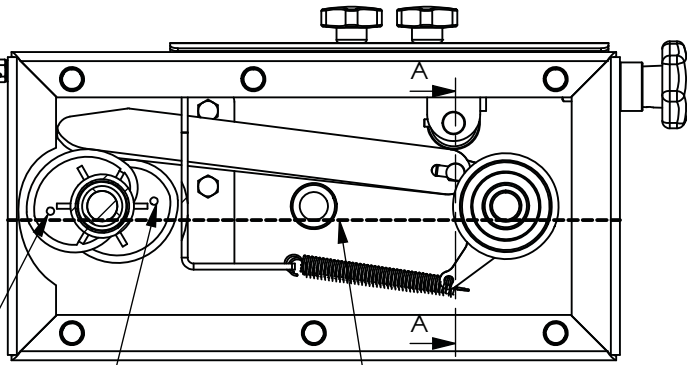
| ITEM | PART NUMBER | DESCRIPTION | REMARKS | QUA |
|------|-------------|------------------------------|---------|-----|
| 1 | 470.034.052 | Gearbox housing | | 1 |
| 2 | 470.064.004 | Gearbox lid | | 1 |
| 3 | 922.340.014 | Gauge decall | | 1 |
| 4 | 444.032.900 | Slider seal | | 1 |
| 5 | 468.022.900 | Indicator | | 1 |
| 6 | 711.200.120 | Bearing 6004 | | 1 |
| 7 | 711.300.132 | Bearing 6006 | | 1 |
| 8 | 762.300.080 | Oil seal 30-45-8 | | 2 |
| 9 | 762.200.070 | Oil seal 20-32-7 | | 2 |
| 10 | 836.080.402 | Closed Knob M8 - Din 6335 | | 2 |
| 11 | 874.210.020 | Copper washer 1_2 | | 1 |
| 12 | 549.210.200 | Blind plug G1/2 | | 1 |
| 13 | 864.080.030 | Washer M8 - ISO 7089 | | 6 |
| 14 | 866.080.020 | Spring Washer M8 - DIN 127 | | 6 |
| 15 | 804.080.250 | Bolt M8 x 25 - ISO 4017 | | 6 |
| 16 | 830.080.080 | Self Lock Nut M8 - ISO 10511 | | 2 |
| 17 | 826.080.080 | Nut M8 - DIN 934 | | 1 |
| 18 | 818.080.350 | Set screw M8x35 - DIN 913 | | 1 |
| | 623.246.405 | Gearbox complete | | |



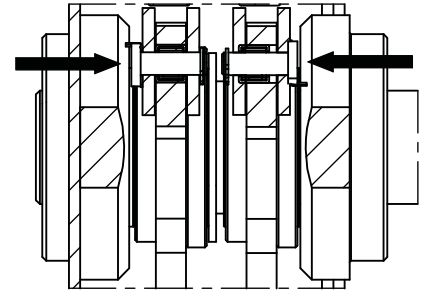
| ITEM | PART NUMBER | DESCRIPTION | REMARKS | QUA |
|------|-------------|-----------------------------|---------------------------------|-----|
| 1 | 422.351.382 | Shaft | | 1 |
| 2 | 478.019.101 | Pivot point | | 1 |
| 3 | 444.020.500 | Washer | | 1 |
| 4 | 422.242.020 | Shaft | | 1 |
| 5 | 444.200.730 | Excenter | | 2 |
| 6 | 868.032.100 | Shim Ø20xØ32x1.0 DIN988 | Quantity depending on clearance | |
| 7 | 406.280.030 | Spacer | | 1 |
| 8 | 464.152.600 | Swing arm | | 2 |
| 9 | 418.060.190 | Pin | | 2 |
| 10 | 575.010.800 | Spring | | 2 |
| 11 | 868.042.100 | Shim Ø30xØ42x1.0 DIN988 | Quantity depending on clearance | |
| 12 | 711.200.120 | Bearing 6004 | | 1 |
| 13 | 711.300.132 | Bearing 6006 | | 1 |
| 14 | 721.060.080 | Bearing HK0608 | | 2 |
| 15 | 470.041.980 | Slider bracket | | 1 |
| 16 | 713.150.110 | Bearing 6202-LLU | | 2 |
| 17 | 414.150.550 | Shaft | | 1 |
| 18 | 406.150.132 | Bush | | 1 |
| 19 | 406.150.020 | Bush | | 2 |
| 20 | 818.050.120 | Set screw M5 x 12 - DIN 913 | | 2 |
| 21 | 470.041.190 | Guide | | 1 |
| 22 | 852.102.500 | Threaded rod M10x250 | | 1 |
| 23 | 826.100.100 | Nut M10 - DIN 934 | | 2 |
| 24 | 870.006.070 | Circlip d=6 - DIN 471 | | 2 |
| 25 | 804.080.200 | Bolt M8 x 20 - ISO 4017 | | 2 |
| 26 | 864.100.030 | Washer M10 - ISO 7089 | | 1 |
| 27 | 874.060.240 | Lock washer | | 2 |
| 28 | 836.100.630 | Knob M10 with set screw | | 1 |

Timing, Spindle adjustment and Grease level

Adjust till max. output is 4:1



SECTION A-A
Place pins from correct side and fold lock plate.

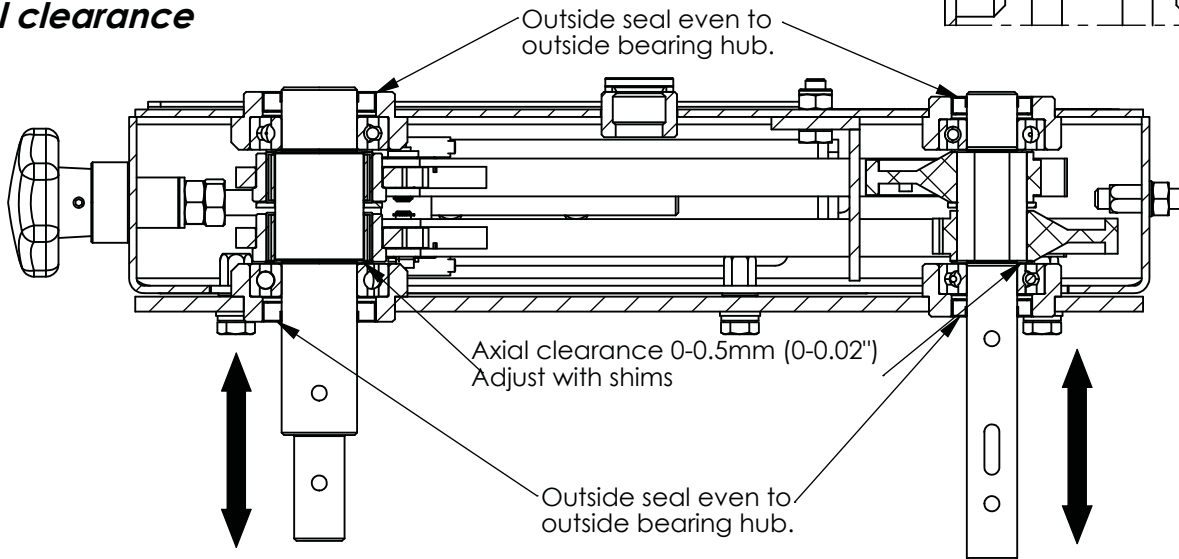


Warning! Make sure the excenters are positioned correct: Fill gearbox with $\pm 2.8\text{kg}$ (6.17lbs.) EP0 grease Fill till level line (Bottom level plug)

- The nodge has to be faced outwards.
- Timing: 180° shifted from each other.

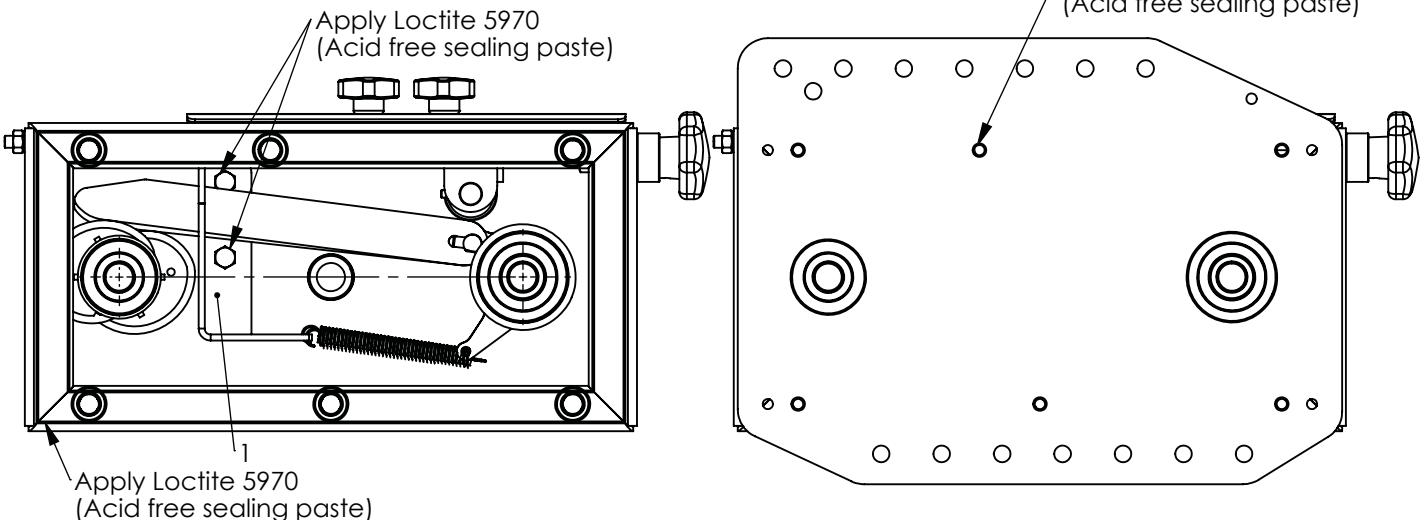
If not correctly installed a shocked rotation will occur at the output shaft.

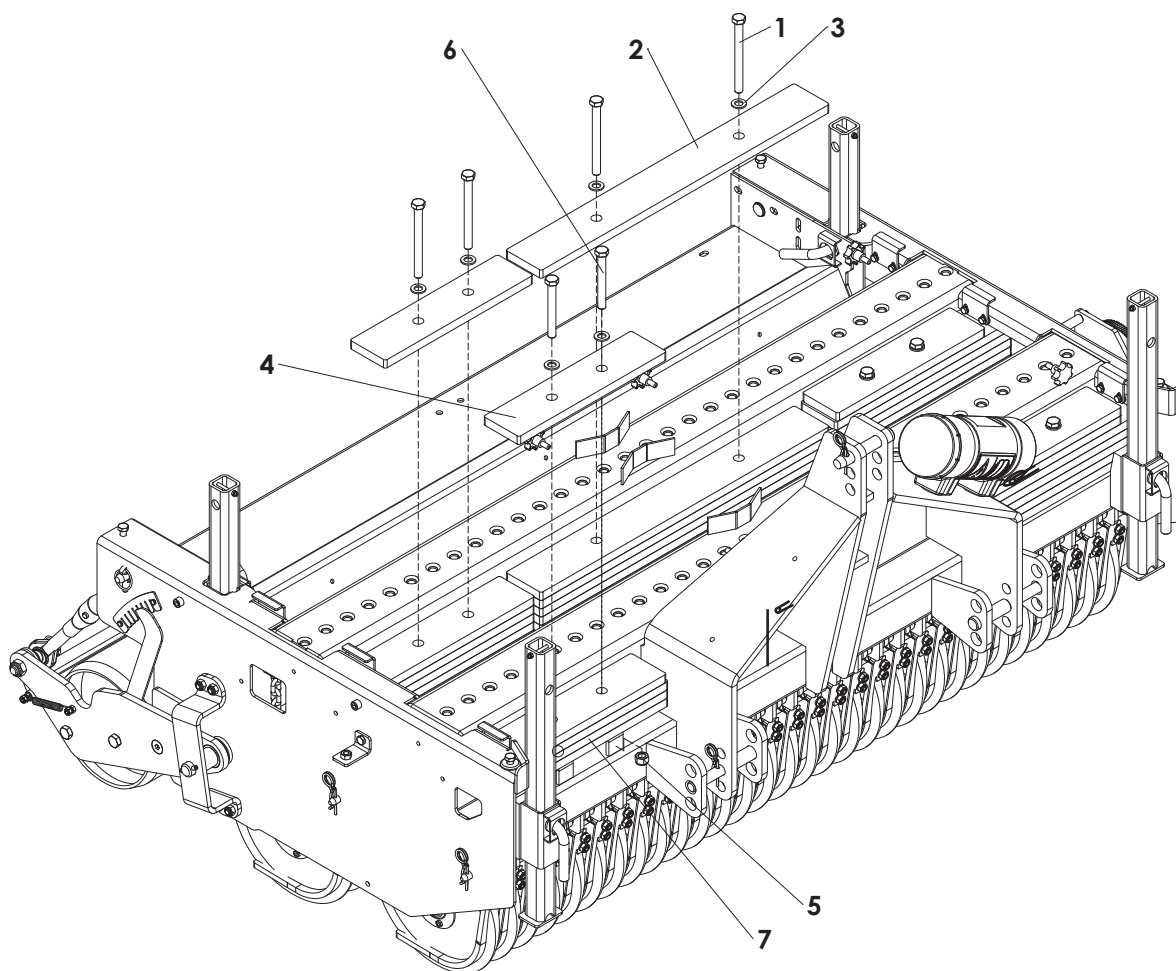
Axial clearance



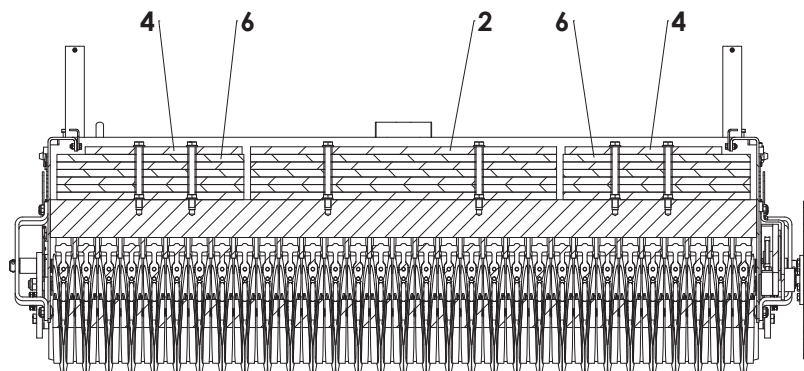
Sealing plan

1. Place sealing paste (Loctite 5970) on gearbox housing as shown in the pictures below. When the guide (1) is removed also apply sealant to the bolts.
2. Place gearbox lid on gearbox housing.
3. Fill bolt holes with silicone sealing before mounting the bolts of the gearbox lid.
4. Make sure to clean the edges of excess sealant.

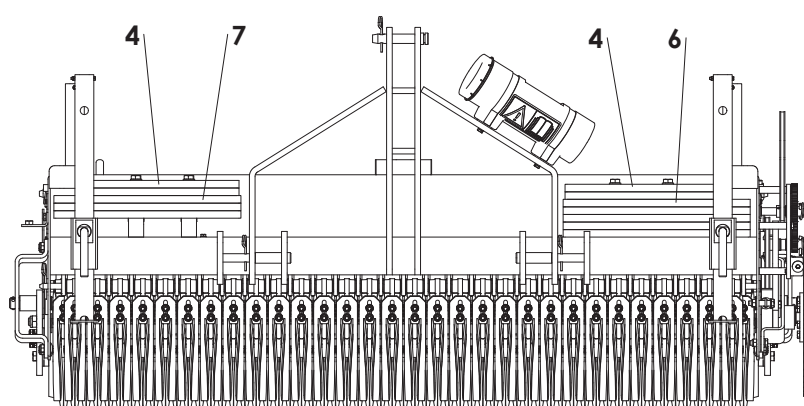




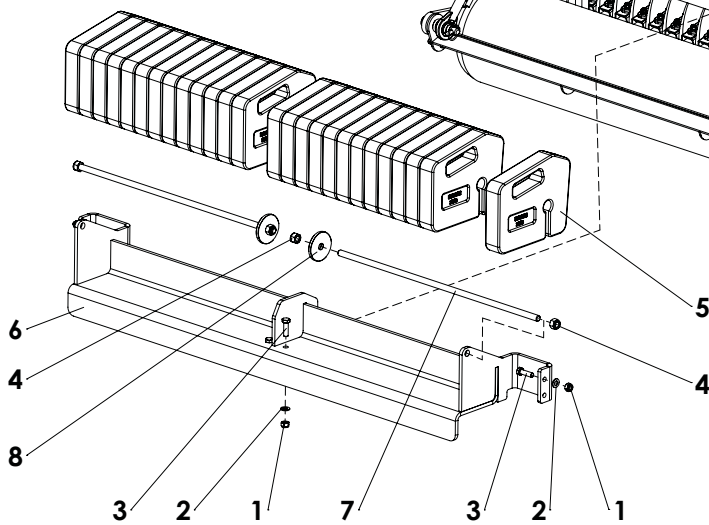
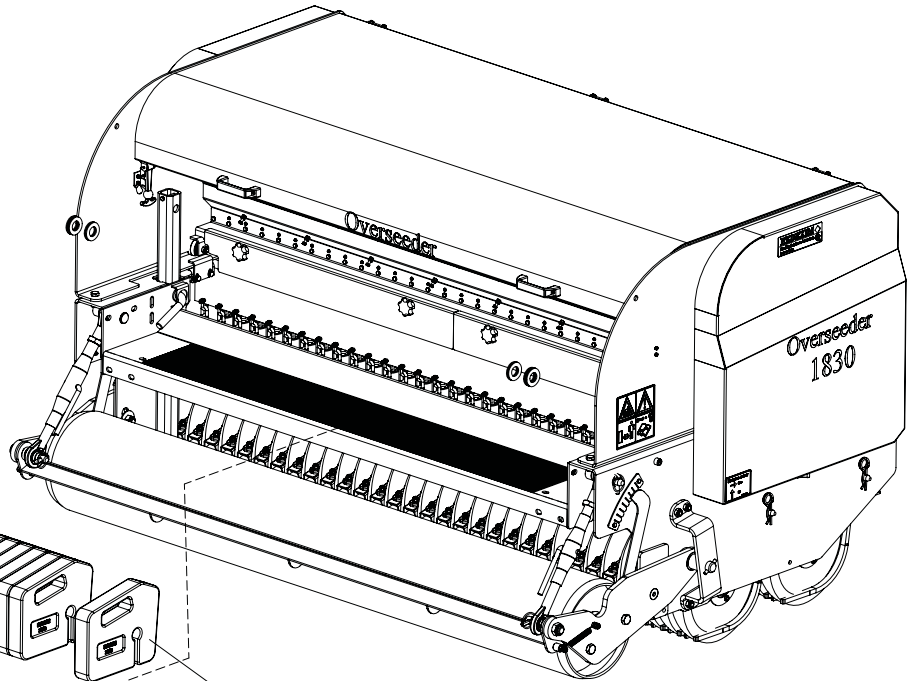
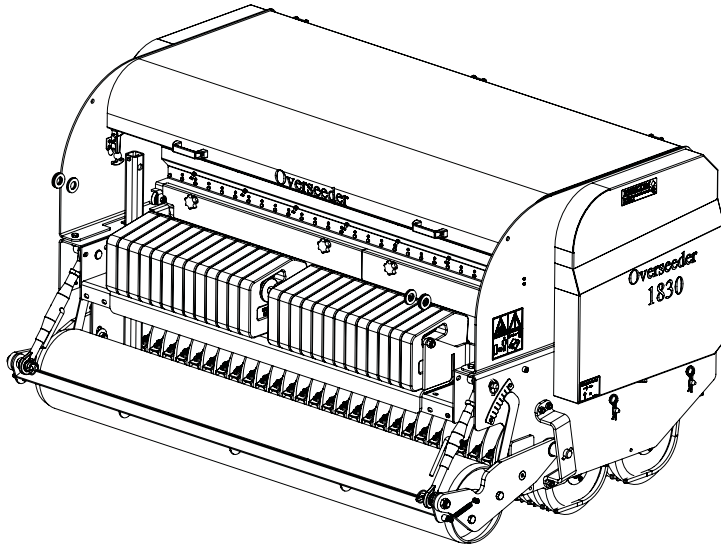
Section inner ballast



Section outer ballast

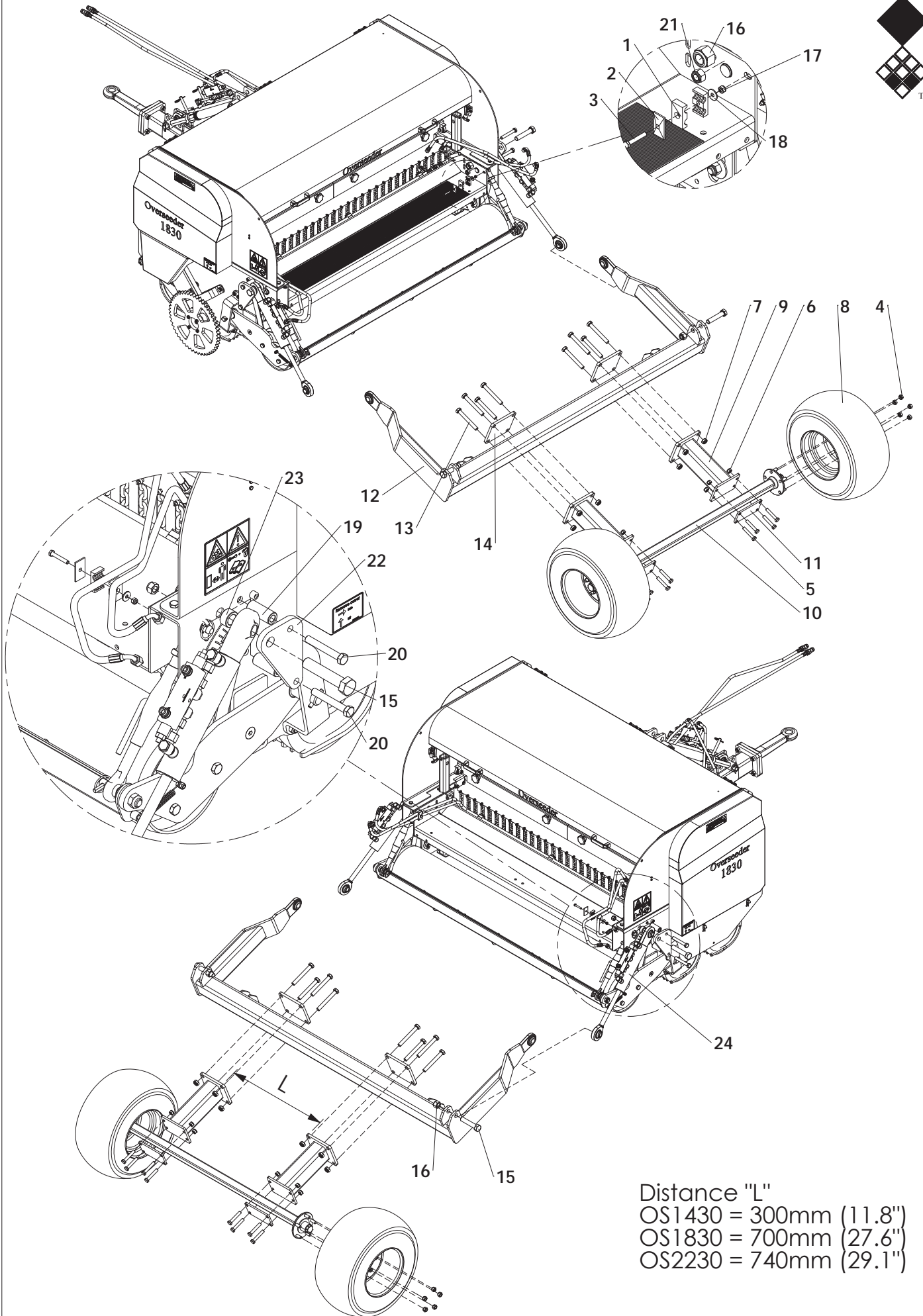


| ITEM | PART NUMBER | DESCRIPTION | REMARKS | QUA OS1430 | QUA OS1830 | QUA OS230 |
|------|-------------|-------------------------------|---------|---------------|---------------|--------------|
| 1 | 802.161.700 | Bolt M16 x 170 - ISO 4014 | | 8 | 8 | 8 |
| 2 | 464.207.700 | Ballast plater center | | 7 | 7 | 7 |
| 3 | 864.160.030 | Washer M16 - ISO 7089 | | 10 | 10 | 10 |
| 4 | 464.204.250 | Ballast plate side 1830 | | 0 | 6 | 0 |
| | 464.202.200 | Ballast plate side 1430 | | 6 | 0 | 0 |
| | 464.206.350 | Ballast plate side 2230 | | 0 | 0 | 6 |
| 5 | 830.160.160 | Self Lock Nut M16 - ISO 10511 | | 10 | 10 | 10 |
| 6 | 802.161.300 | Bolt M16 x 130 - ISO 4014 | | 2 | 2 | 2 |
| 7 | 464.205.300 | Ballast plate rear 1830 | | 0 | 18 | 0 |
| | 464.203.300 | Ballast plate rear 1430 | | 18 | 0 | 0 |
| | 464.207.400 | Ballast plate rear 2230 | | 0 | 0 | 18 |
| | | | | | | |
| | 222.140.006 | Weight kit | | 1 | 0 | 0 |
| | 222.180.006 | weight kit | | 0 | 1 | 0 |
| | 222.220.006 | Weight kit | | 0 | 0 | 1 |



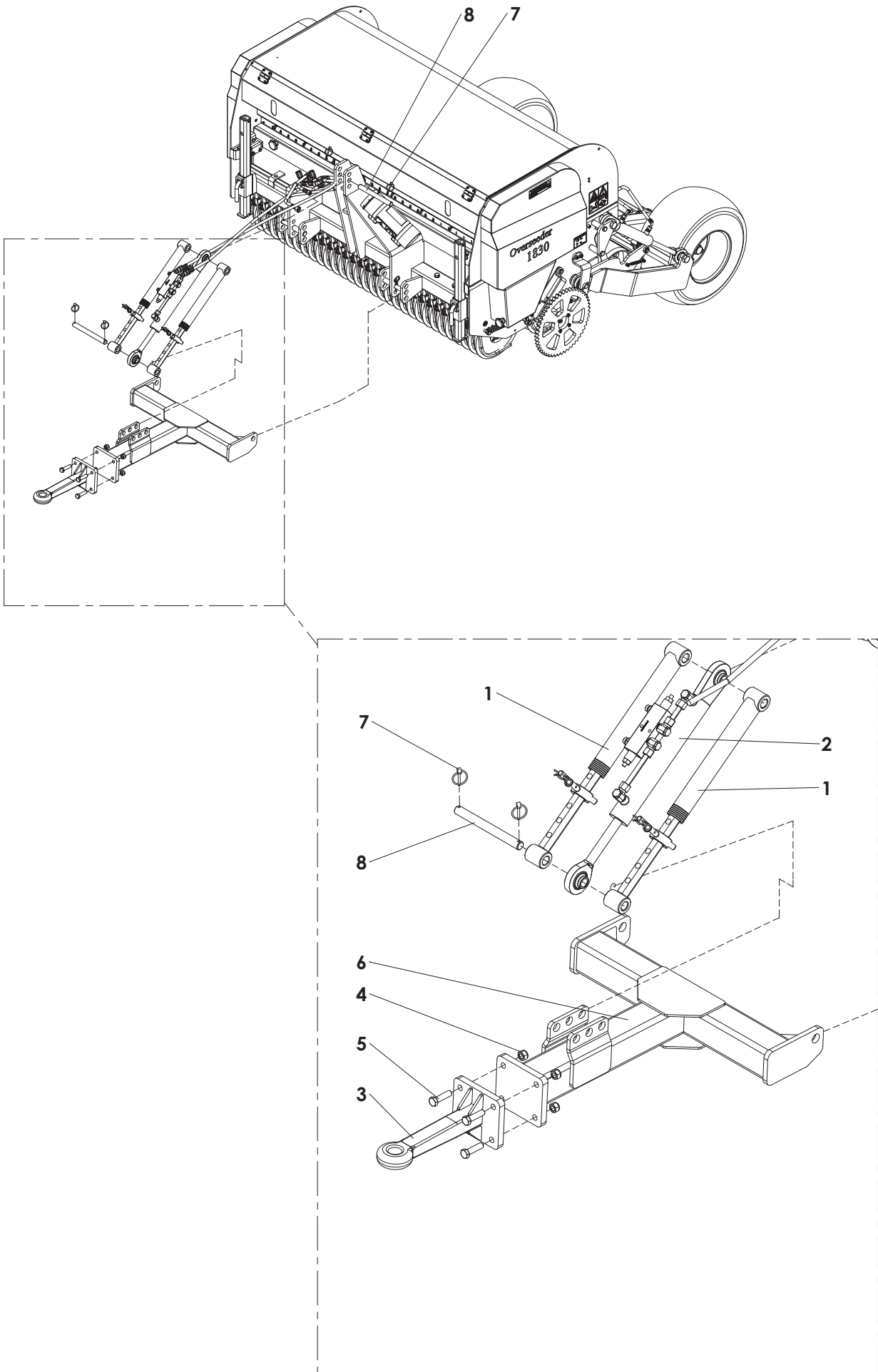
Redexim Weight kit Overseeder 1430A - 1830A -2230A Page 16 Code 1912

| ITEM | PART NUMBER | DESCRIPTION | REMARKS | QUA OS1430 | QUA OS1830 | QUA OS2230 |
|------|-------------|-------------------------------|---------|---------------|---------------|---------------|
| 1 | 830.120.120 | Self Lock Nut M12 - ISO 10511 | | 8 | 8 | 8 |
| 2 | 864.120.030 | Washer M12 - ISO 7089 | | 4 | 4 | 4 |
| 3 | 804.120.400 | Bolt M12 x 40 - ISO 4017 | | 4 | 4 | 4 |
| 4 | 830.160.160 | Self Lock Nut M16 - ISO 10511 | | 4 | 4 | 4 |
| 5 | 492.502.800 | Weight 20kg | | 16 | 26 | 34 |
| 6 | 494.167.017 | Ballast frame Overseeder 1830 | OS1830 | 0 | 1 | 0 |
| | 494.126.020 | Ballast frame Overseeder 1430 | OS1430 | 1 | 0 | 0 |
| | 494.202.020 | Ballast frame Overseeder 2230 | OS2230 | 0 | 0 | 1 |
| 7 | 416.167.200 | Threaded rod M16x720 | OS1830 | 0 | 1 | 0 |
| | 416.164.500 | Threaded rod M16 | OS1430 | 1 | 0 | 0 |
| | 416.169.200 | Threaded rod M16 | OS2230 | 0 | 0 | 1 |
| 8 | 402.170.080 | Ring Ø80/Ø17 d=8 | | 2 | 2 | 2 |
| | 222.140.004 | Weight kit | OS1430 | 1 | 0 | 0 |
| | 222.180.004 | Weight kit | OS1830 | 0 | 1 | 0 |
| | 222.220.004 | Weight kit | OS2230 | 0 | 0 | 1 |

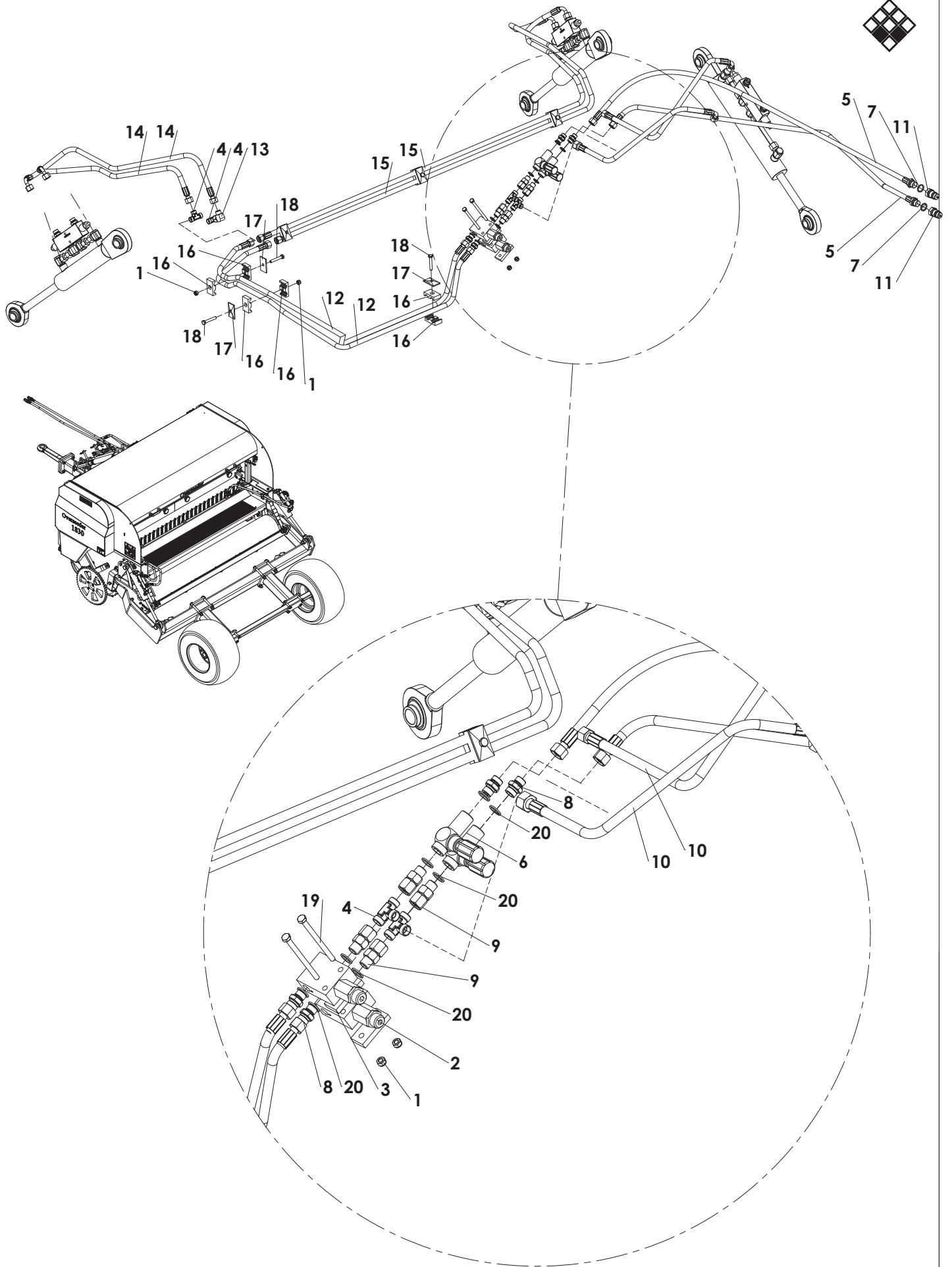


Distance "L"
 OS1430 = 300mm (11.8")
 OS1830 = 700mm (27.6")
 OS2230 = 740mm (29.1")

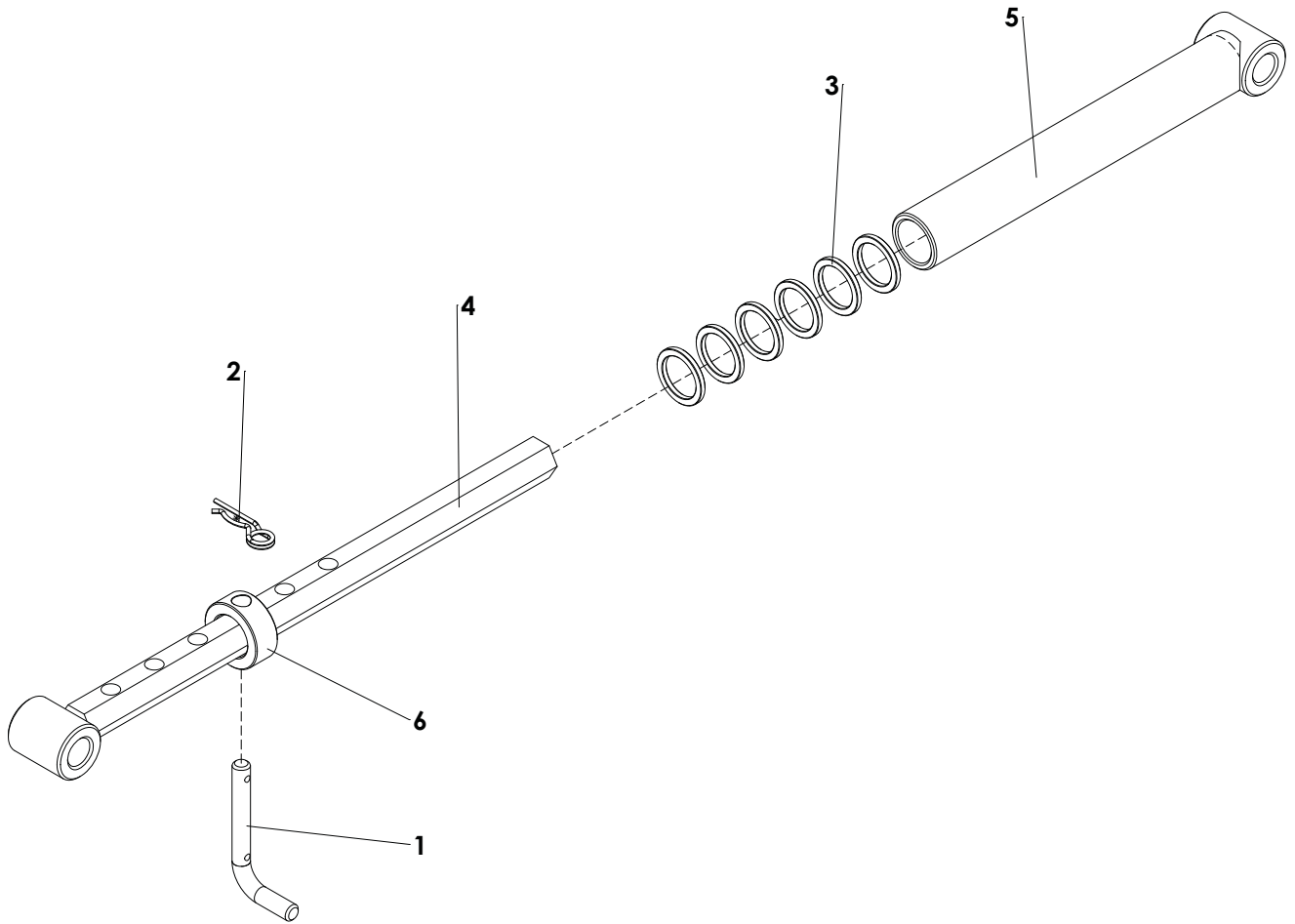
| ITEM | PART NUMBER | DESCRIPTION | REMARKS | QUA OS1430 | QUA OS1830 | QUA OS2230 |
|------|-------------|--------------------------------------|-----------------|---------------|---------------|---------------|
| 1 | 547.150.150 | Hose clamp double 15mm | | 4 | 4 | 4 |
| 2 | 547.300.510 | Cover plate hose clamp 2x15 - 2x18 | | 2 | 2 | 2 |
| 3 | 802.080.500 | Bolt M8 x 50 - ISO 4014 | | 2 | 2 | 2 |
| 4 | 844.160.160 | Wheel Nut M16 | | 10 | 10 | 10 |
| 5 | 802.160.900 | Bolt M16 x 90 - ISO 4014 | | 8 | 8 | 8 |
| 6 | 830.160.160 | Self Lock Nut M16 - ISO 10511 | | 8 | 8 | 8 |
| 7 | 830.200.200 | Self Lock Nut M20 Din 985 h=17 | | 8 | 8 | 8 |
| 8 | 511.660.305 | Wheel 26x12 inch complete | | 2 | 2 | 2 |
| 9 | 462.150.375 | Axle spacer | | 2 | 2 | 2 |
| 10 | 519.050.915 | Wheel shaft 50x50 L=1500 | OS1830 + OS2230 | 0 | 1 | 1 |
| | 494.117.017 | Wheel shaft 50x50 L=1100 | OS1430 | 1 | 0 | 0 |
| 11 | 464.102.000 | Clamp strip | | 2 | 2 | 2 |
| 12 | 494.215.082 | Bogy frame Overseeder 1830 | | 0 | 1 | 0 |
| | 494.173.082 | Bogy frame Overseeder 1430 | | 1 | 0 | 0 |
| | 494.257.082 | Bogy frame Overseeder 2230 | | 0 | 0 | 1 |
| 13 | 802.201.600 | Bolt M20 x 160 - ISO 4014 | | 8 | 8 | 8 |
| 14 | 468.152.006 | Mounting plate | | 2 | 2 | 2 |
| 15 | 808.010.051 | Hex Bolt 1"-8x5" UNC - ANSI B18.2.1 | | 4 | 4 | 4 |
| 16 | 838.010.220 | Self Lock Nut 1 inch UNC - DIN 985 | | 4 | 4 | 4 |
| 17 | 830.080.080 | Self Lock Nut M8 - ISO 10511 | | 2 | 2 | 2 |
| 18 | 864.080.024 | Large washer M8 - DIN 9021 | | 2 | 2 | 2 |
| 19 | 406.170.710 | Distance bush Ø30/Ø16.5 L=71 | | 4 | 4 | 4 |
| 20 | 802.161.100 | Bolt M16 x 110 - ISO 4014 | | 4 | 4 | 4 |
| 21 | 830.160.160 | Self Lock Nut M16 - ISO 10511 | | 4 | 4 | 4 |
| 22 | 468.152.130 | Cylinder contra plate | | 2 | 2 | 2 |
| 23 | 406.260.200 | Distance bush Ø40/Ø26 L=20 | | 2 | 2 | 2 |
| 24 | 534.250.493 | Hydraulic cylinder 25-50 Stroke=200 | | 2 | 2 | 2 |
| | | | | | | |
| | 222.140.002 | Double Disc Overseeder 1430 Bogy kit | | | | |
| | 222.180.002 | Double Disc Overseeder 1830 Bogy kit | | | | |
| | 222.220.002 | Double Disc Overseeder 2230 Bogy kit | | | | |



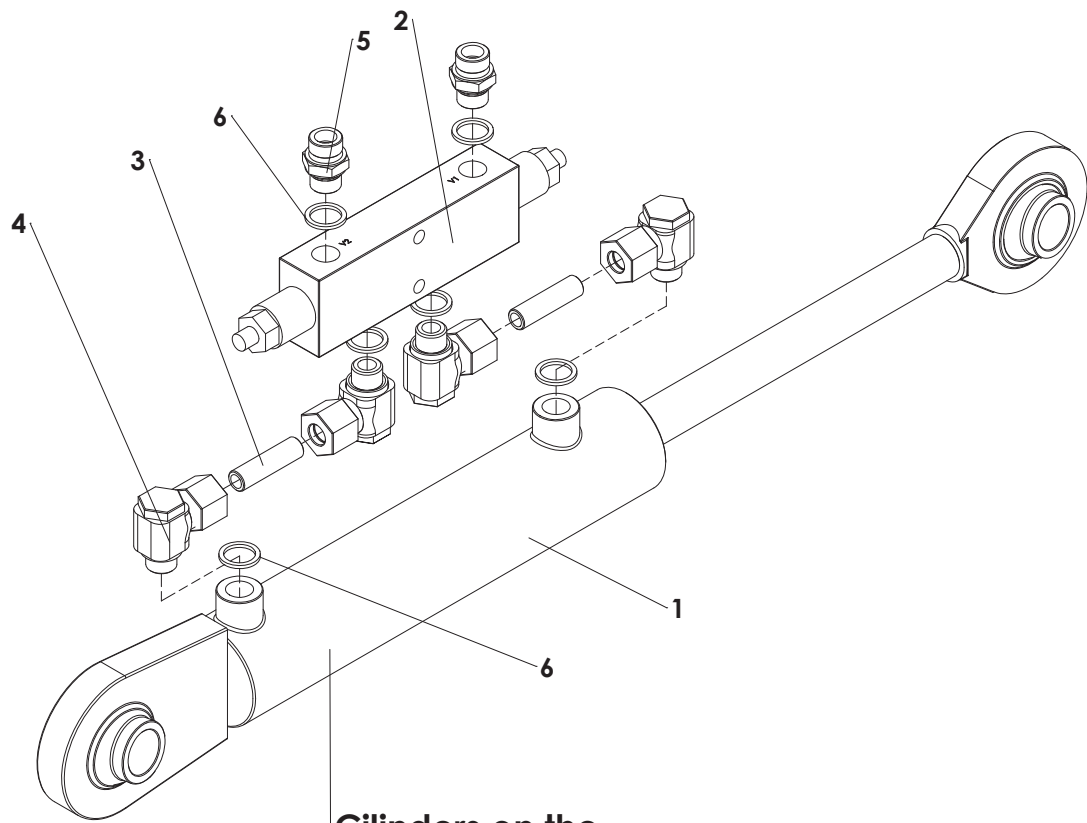
| ITEM | PART NUMBER | DESCRIPTION | REMARKS | QUA OS1430 | QUA OS1830 | QUA OS2230 |
|------|-------------|-------------------------------|---------|---------------|---------------|---------------|
| 1 | | Block cylinder assembly | Page 18 | 2 | 2 | 2 |
| 2 | 534.250.592 | Cylinder assembly | Page 20 | 1 | 1 | 1 |
| 3 | 470.203.900 | Towing hitch | | 1 | 1 | 1 |
| 4 | 830.160.160 | Self Lock Nut M16 - ISO 10511 | | 4 | 4 | 4 |
| 5 | 802.160.600 | Bolt M16 x 60 - ISO 4014 | | 4 | 4 | 4 |
| 6 | 462.217.812 | Drawbar Bogy | | 1 | 1 | 1 |
| 7 | 523.060.320 | Linch pin Ø6 | | 4 | 4 | 4 |
| 8 | 414.252.500 | Link pin | | 2 | 2 | 2 |



| ITEM | PART NUMBER | DESCRIPTION | REMARKS | QUA OS1430 | QUA OS1830 | QUA OS2230 |
|------|-------------|--|---------|---------------|---------------|---------------|
| 1 | 830.080.080 | Self Lock Nut M8 - ISO 10511 | | 7 | 7 | 7 |
| 2 | 535.300.740 | Sequence valve | | 2 | 2 | 2 |
| 3 | 464.100.650 | Strip | | 2 | 2 | 2 |
| 4 | 544.124.125 | T-Connector 12x12x12 | | 4 | 4 | 4 |
| 5 | 541.173.000 | Hose NSK10-3/8" TL=2500 PGLO1018 +PN108 | | 2 | 2 | 2 |
| 6 | 536.300.500 | Flow reducer 3/8" FPU05001 | | 2 | 2 | 2 |
| 7 | 874.210.020 | Copper washer 1_2 | | 2 | 2 | 2 |
| 8 | 544.170.120 | Nipple BSP 3_8" x pipe 12 (M18) | | 4 | 4 | 4 |
| 9 | 543.170.122 | Joint Connector Straight 3/8" x Ø12 Prem. | | 4 | 4 | 4 |
| 10 | 541.170.830 | Hose NSK10-3/8" TL=830 PGLO101890 + PGLO1018 | | 2 | 2 | 2 |
| 11 | 545.210.800 | Quick connector male 1/2" | | 2 | 2 | 2 |
| 12 | 541.171.610 | Hose NSK10-3/8" TL=1610 2xPGLO1018 | OS1830 | 0 | 2 | 0 |
| | 541.171.410 | Hose NSK10-3/8" TL=1410 2xPGLO1018 | OS1430 | 2 | 0 | 0 |
| | 541.171.810 | Hose NSK10-3/8" TL=1810 2xPGLO1018 | OS2230 | 0 | 0 | 2 |
| 13 | 544.120.361 | L-Connector | | 1 | 1 | 1 |
| 14 | 541.170.950 | Hose NSK10-3/8" TL=950 PGLO1018 + PGLO101890 | | 2 | 2 | 2 |
| 15 | 541.172.350 | Hose NSK10-3/8" TL=2350 PGLO101890 + PGLO1018 | OS1830 | 0 | 2 | 0 |
| | 541.171.950 | Hose NSK10-3/8" TL=1950 PGLO101890 + PGLO1018 | OS1430 | 2 | 0 | 0 |
| | 541.172.770 | Hose NSK10-3/8" TL=2770 PGLO101890 + PGLO1018 | OS2230 | 0 | 0 | 2 |
| 16 | 547.150.150 | Hose clamp double 15mm | | 12 | 12 | 12 |
| 17 | 547.300.510 | Cover plate hose clamp | | 6 | 6 | 6 |
| 18 | 802.080.500 | Bolt M8 x 50 - ISO 4014 | | 6 | 6 | 6 |
| 19 | 802.081.100 | Bolt M8 x 110 - ISO 4014 | | 2 | 2 | 2 |
| 20 | 874.170.020 | Copper washer 3_8 | | 8 | 8 | 8 |



| ITEM | PART NUMBER | DESCRIPTION | REMARKS | QUA |
|------|-------------|-----------------------------|-----------------|-----|
| 1 | 424.151.280 | Lock pin | Qua per machine | 2 |
| 2 | 523.030.750 | R-Clip Round 3, DIN 11024 | Qua per machine | 2 |
| 3 | 406.390.050 | Distance bush Ø51/Ø38.4 L=5 | Qua per machine | 12 |
| 4 | 474.324.504 | Hex stop inner | | 1 |
| 5 | 478.513.502 | Hex stop outer | | 1 |
| 6 | 402.380.250 | Bush | | 1 |

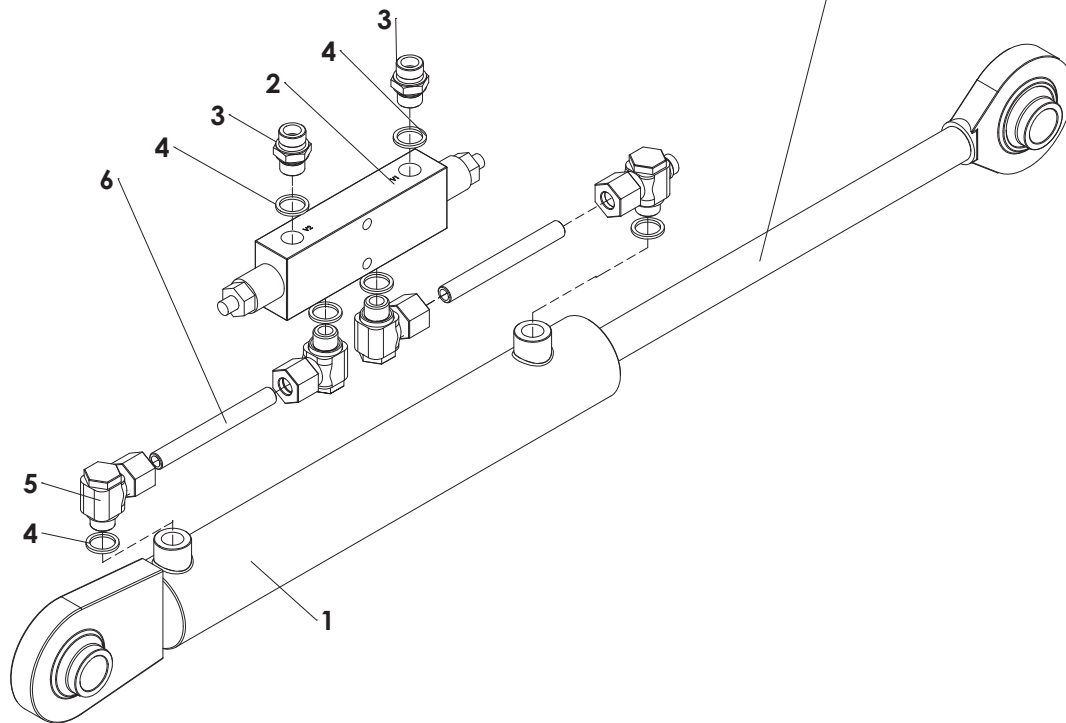


**Cilinders on the
back side of the Overseeder**

| ITEM | PART NUMBER | DESCRIPTION | REMARKS | QUA |
|------|-------------|-------------------------------------|--|-----|
| 1 | 534.250.492 | Hydraulic cylinder 25-50 Stroke=200 | | 1 |
| 2 | 536.502.100 | Double equalising valve 3/8" | | 1 |
| 3 | 542.120.045 | Tube 12 x 45 | | 2 |
| 4 | 544.123.122 | L-connector G3/8-12mm | | 4 |
| 5 | 544.170.120 | Nipple BSP 3_8" x pipe 12 (M18) | | 2 |
| 6 | 874.170.020 | Copper washer 3_8 | | 6 |
| | | | | |
| | 534.250.493 | Hydraulic cylinder | All items but 2x #5 and 2x #6 excluded | |
| | | | | |



3-point cilinder on the tractor side of the Overseeder



| ITEM | PART NUMBER | DESCRIPTION | REMARKS | QUA |
|------|-------------|--------------------------------------|--|-----|
| 1 | 534.250.591 | Hydraulic cylinder 25-50, Stroke=300 | | 1 |
| 2 | 536.502.100 | Double equalising valve 3/8" | | 1 |
| 3 | 544.170.120 | Nipple BSP 3_8" x pipe 12 (M18) | | 2 |
| 4 | 874.170.020 | Copper washer 3_8 | | 6 |
| 5 | 544.123.122 | L-connector G3/8-12mm | | 4 |
| 6 | 542.120.135 | Tube 12x135 | | 2 |
| | 534.250.592 | Cylinder assembly front cilinder | All items but 2x #3 and 2x #4 excluded | |

