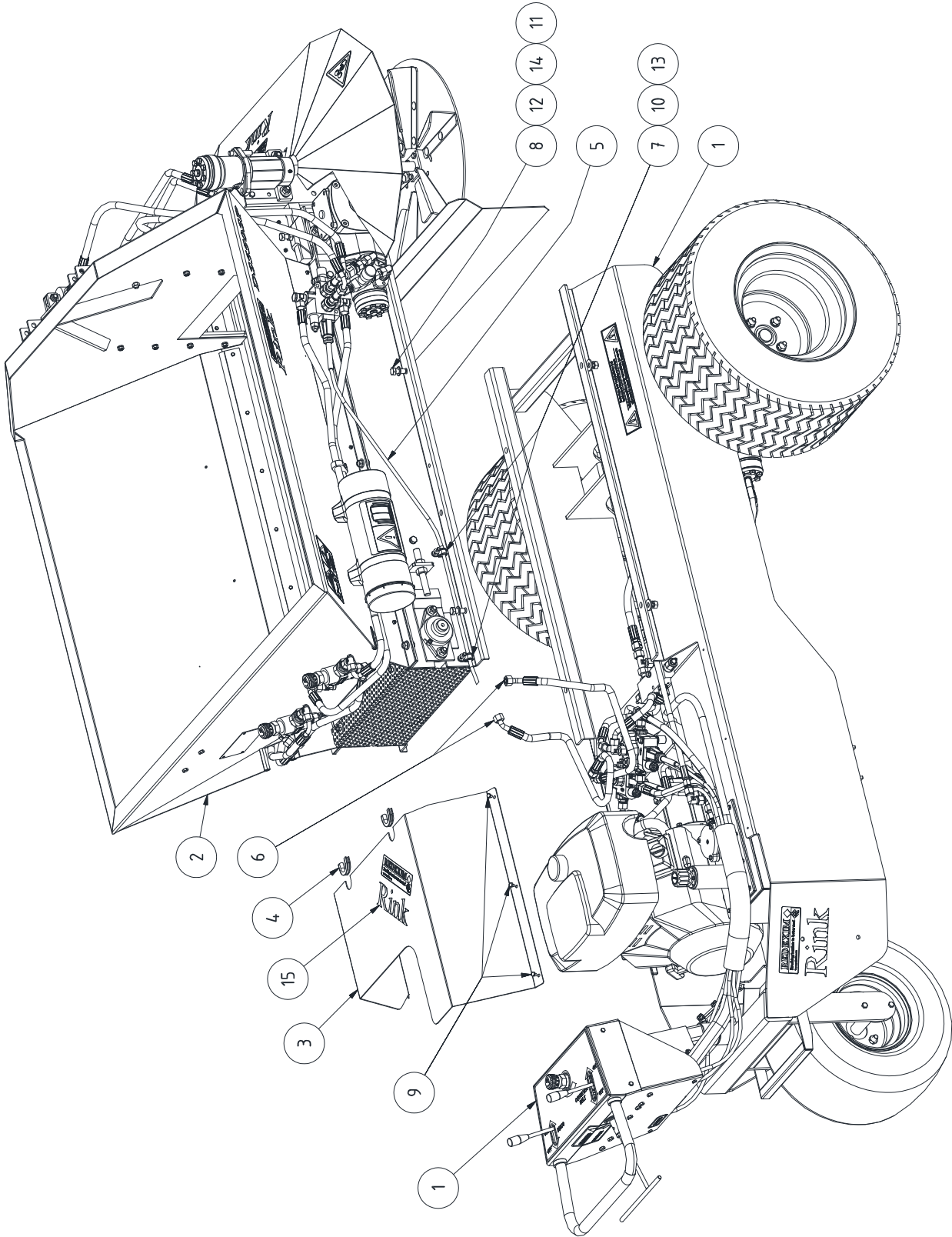


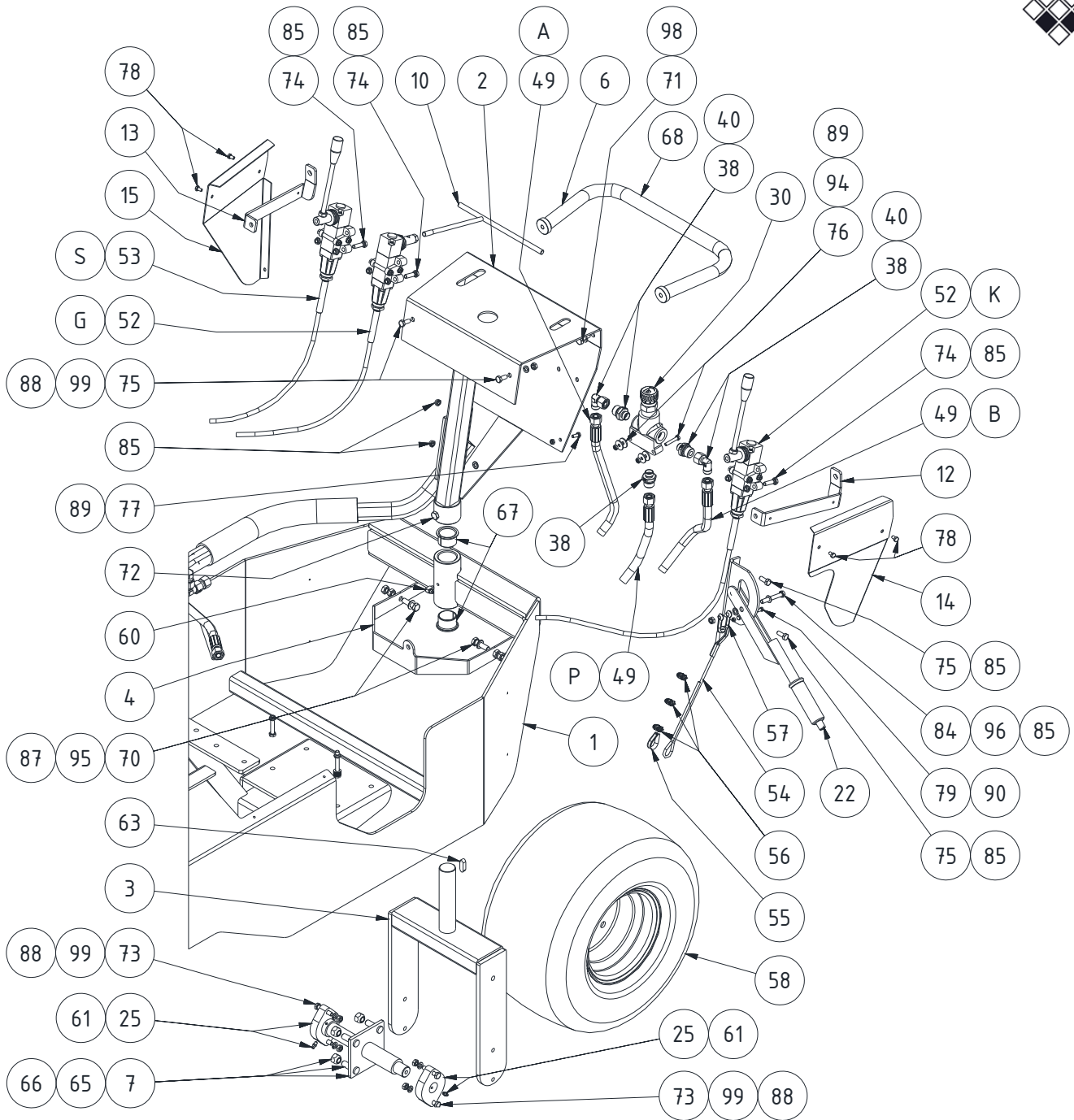
Parts manual

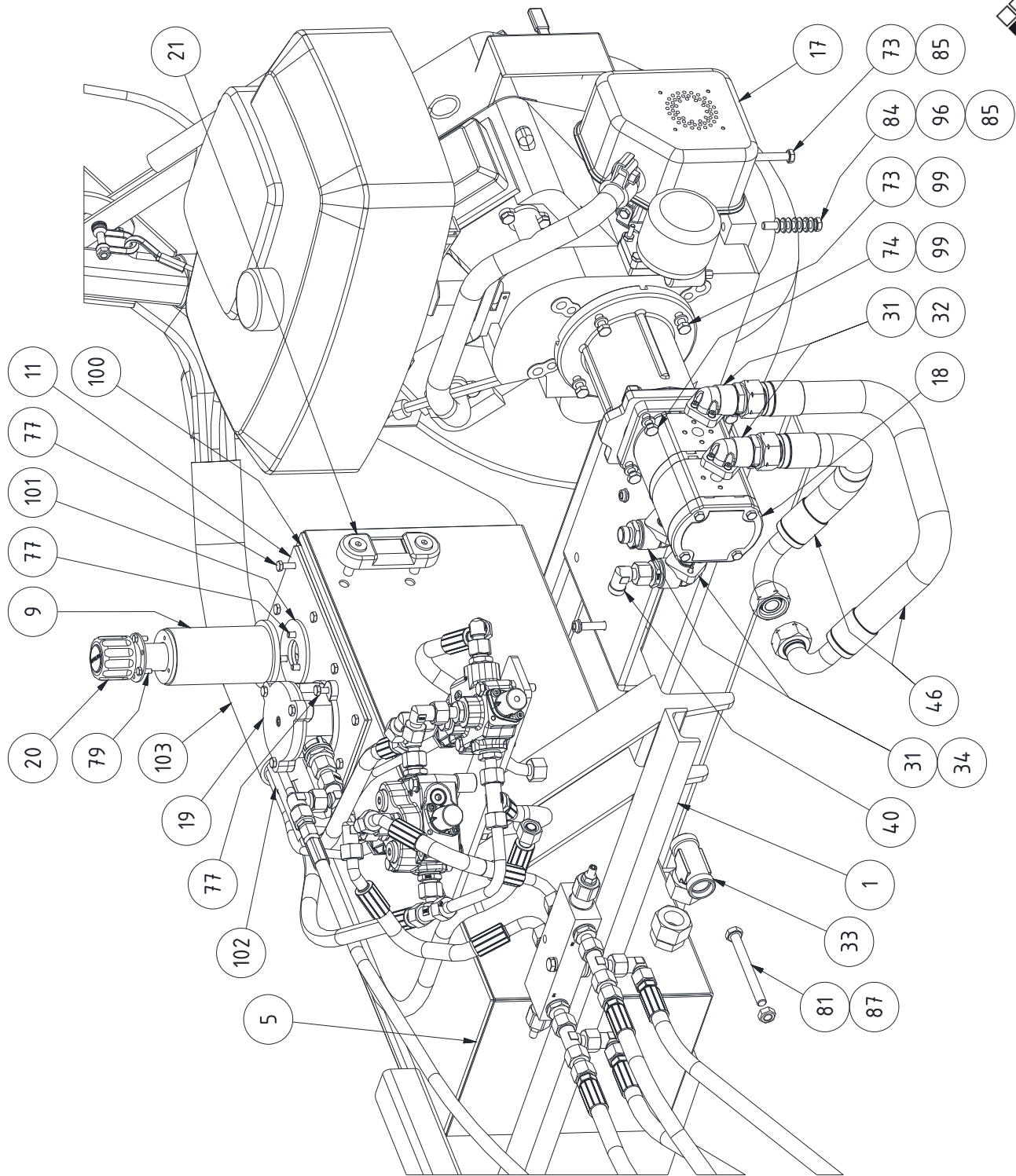


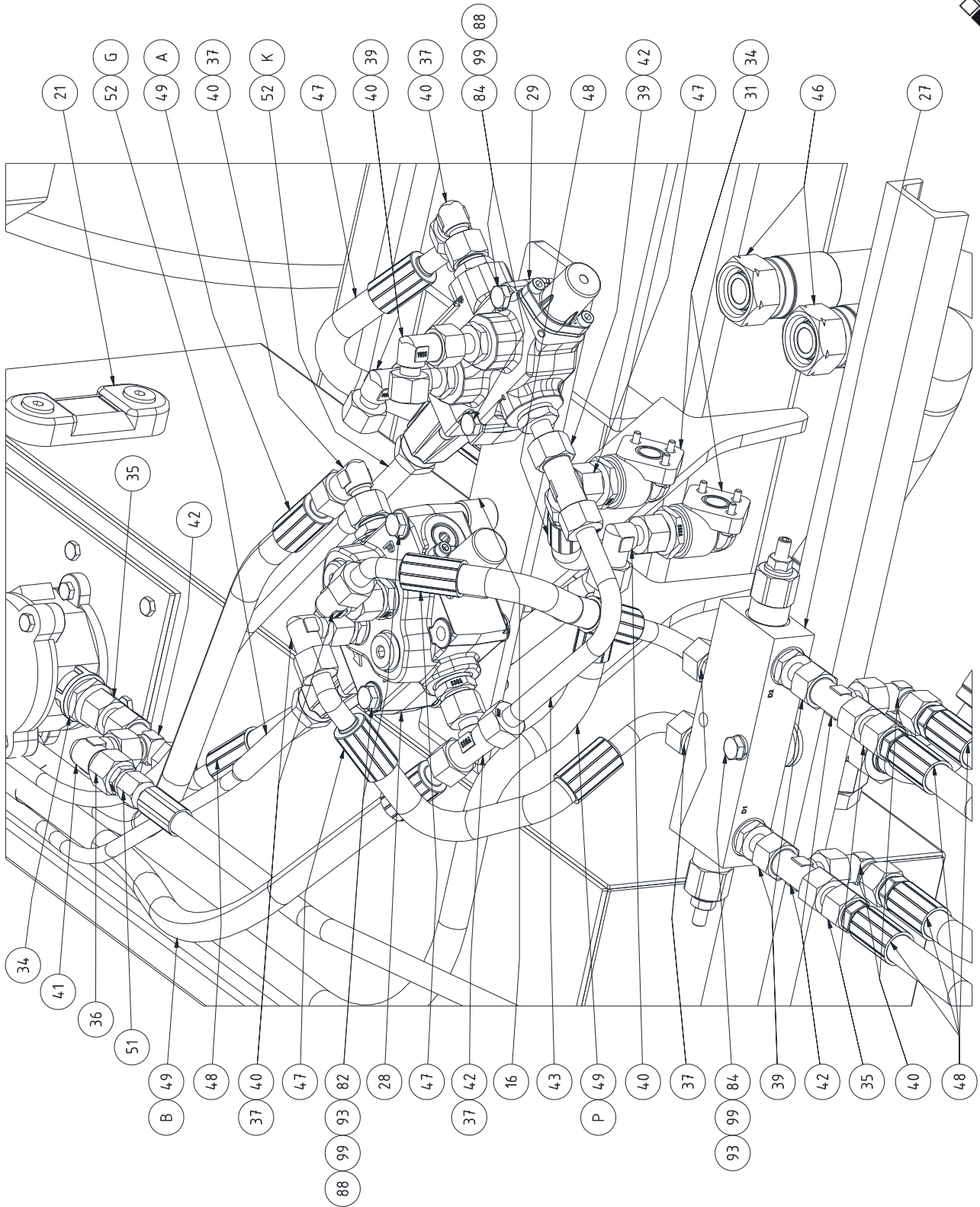


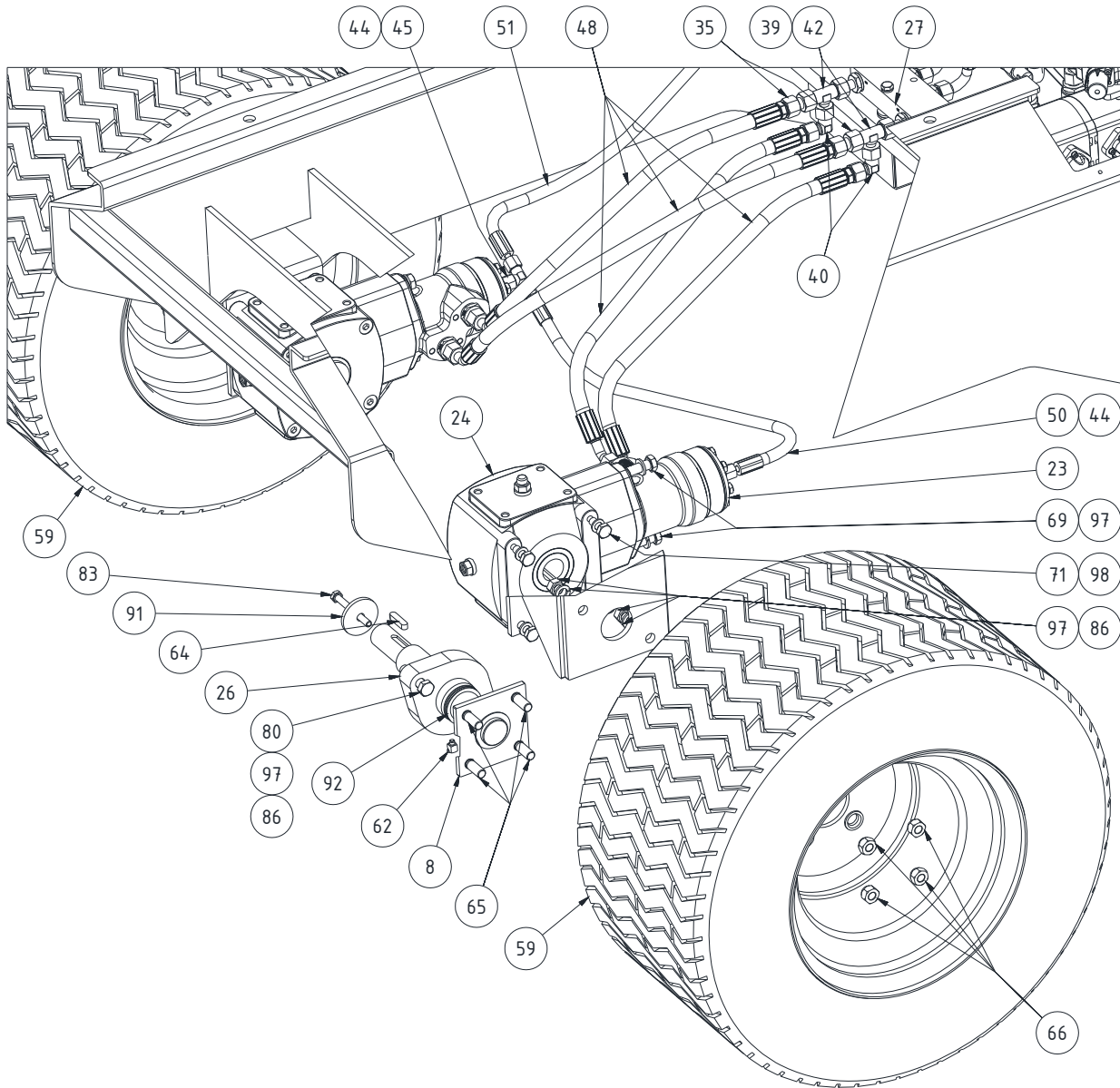
Redexim RINK DS550SP**Page 01 Code 1712**

	PART NO	DESCRIPTION	REMARKS	QUA
1		Drive	See parts page 02	
2		Hopper	See parts page 03	
3	RGS 16904	Cover		1
4	RGS 10268	Edge protection		2
5	RGS 5010	Cable with connection kit	L=2500mm	1
6	RGS 10671	Hydraulic hose 10x750		2
7	547.130.200	Hose clamp		2
8	804.120.300	Bolt M12x30		4
9	804.060.100	Bolt M6x10		5
10	804.050.120	Bolt M5x12		2
11	830.120.120	Self-lock nut M12		4
12	864.120.030	Washer		4
13	864.050.030	Washer		2
14	866.120.020	Spring washer		4
15	933.260.402	Decall Rink		1





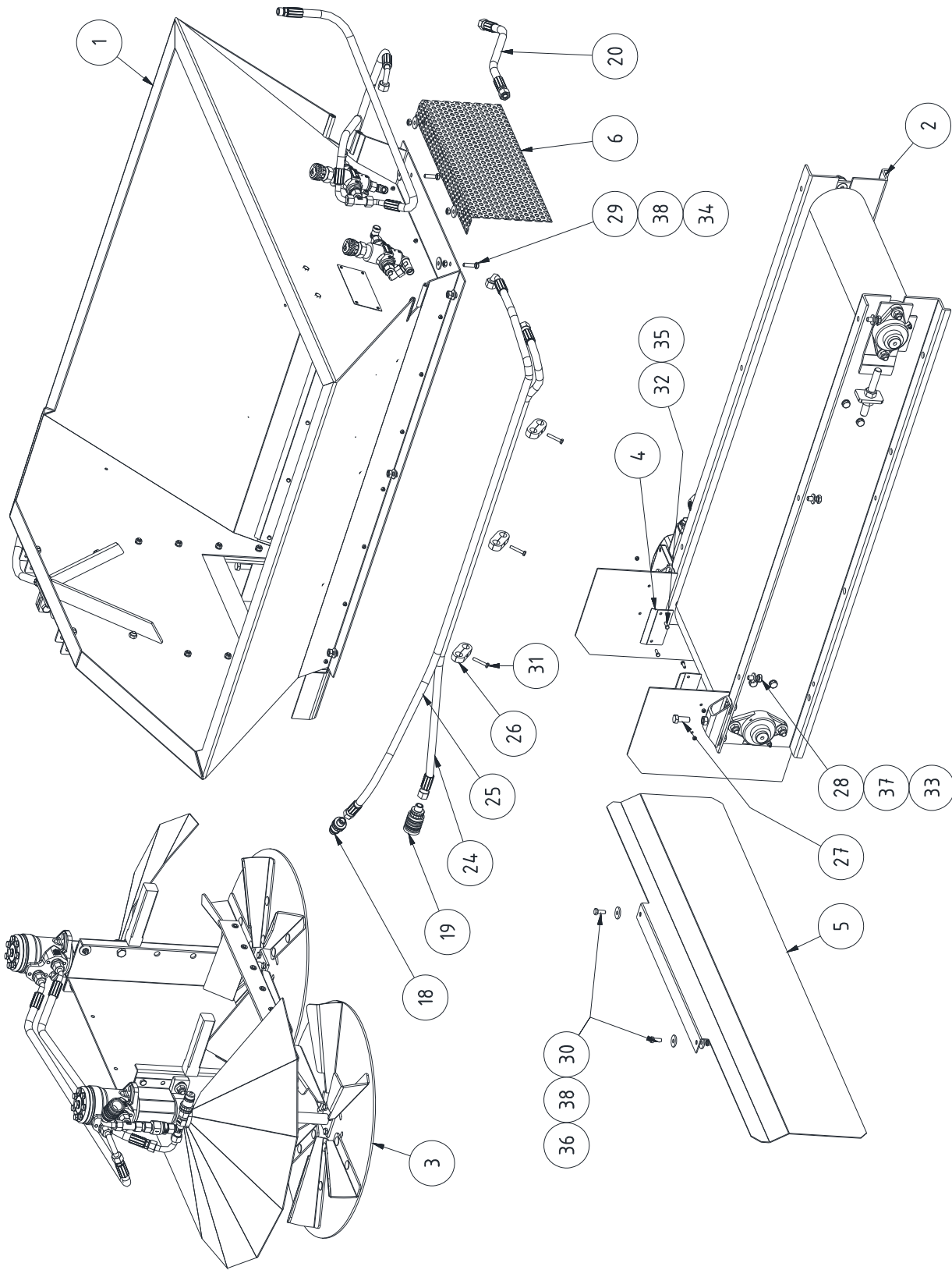


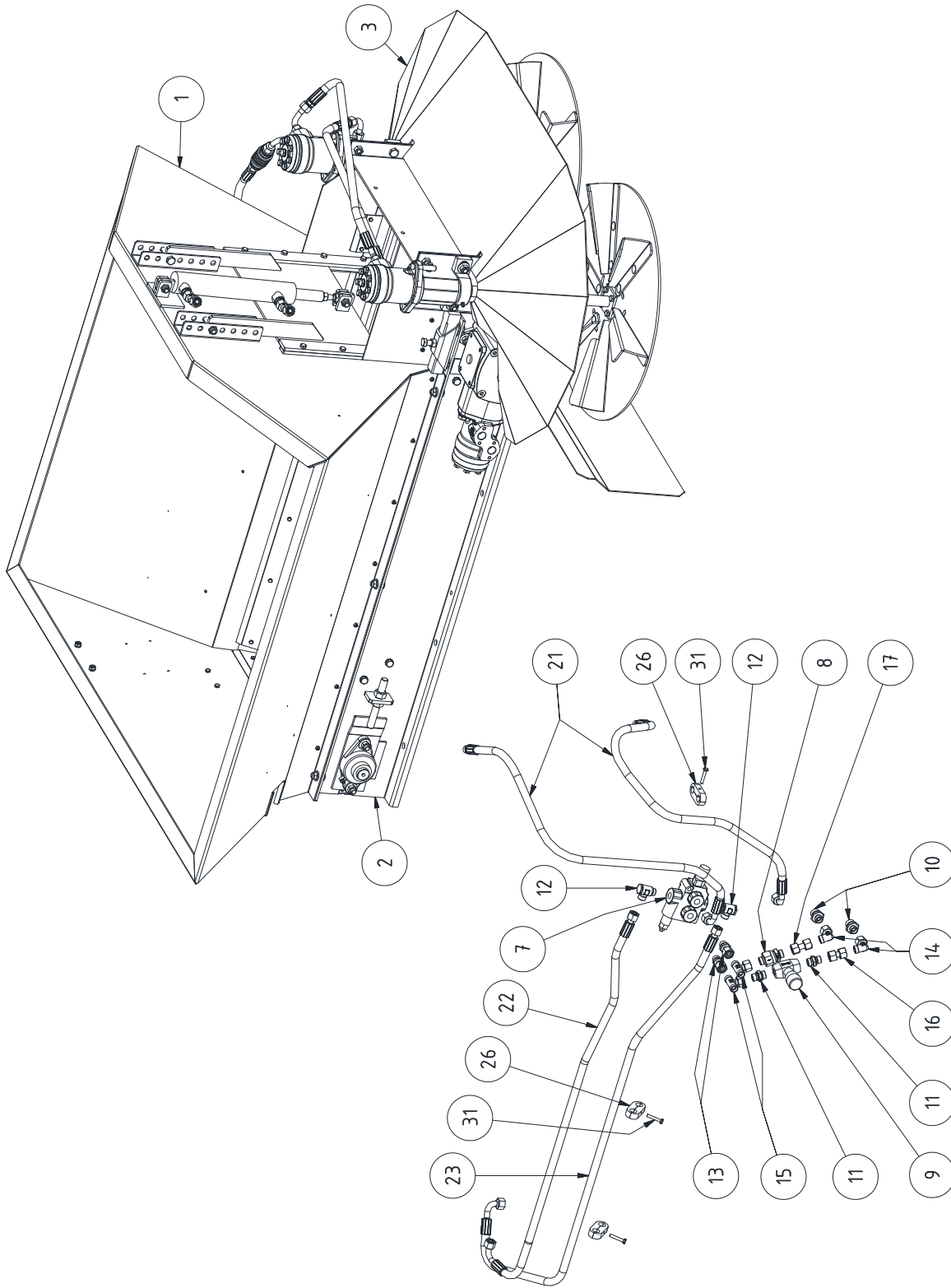


Redexim RINK DS550SP**Page 02 Code 1712**

	PART NO	DESCRIPTION	REMARKS	QUA
1	RGS 16900	Frame		1
2	RGS 16910	Control box		1
3	RGS 16914	Front fork		1
4	RGS 16917	Brake lever		1
5	RGS 16077	Oil tank		1
6	RGS 16916	Handlebar		1
7	RGS 16929	Axle		1
8	RGS 17154	Drive shaft		2
9	RGS 16930	Cap for hydraulic tank		1
10	RGS 16933	Lever		1
11	RGS 16059	Nut		1
12	RGS 16907 Left	Support		1
13	RGS 16907 right	Support mirrored		1
14	RGS 16906	Cover		1
15	RGS 17191	Cover		1
16	RGS 15338	Spacer		2
17	RGS 10684	Motor 18 PS		1
18	RGS 5000	Pump		1
19	RGS 10841	Oil filter		1
20	RGS 10840	Filling and ventilation filter		1
21	RGS 10842	Oil level indicator		1
22	RGS 17182	Brake lever		1
23	RGS 10446	Hydraulic motor		2
24	RGS 10511	Gearbox		2
25	742.250.290	Bearing		2
26	RGS 10447	Bearing		2
27	RGS 5005	Shut-off Valve		1
28	RGS 5003	Control valve		1
29	RGS 10668	Valve		1
30	RGS 10005	Regulator 50L		1
31	RGS 5004	Flange		4
32	RGS 5008	Connector		2
33	RGS 5009	T- Connector		1
34	RGS 10662	Connector		7
35	RGS 10040	Straight nipple		3
36	RGS 10874	L-connector		1
37	RGS 10660	Connector		7
38	RGS 10028	Nipple		3
39	543.170.120	Nipple		5
40	544.180.400	L-connector		11
41	RGS 10661	L-connector		1
42	544.124.126	T-connector		5
43	RGS 16936	90° Connection		1
44	RGS 10652	Connector		2
45	RGS 10875	T-connector		1
46	RGS 5002	Hydraulic hose 20x500		2
47	RGS 10673	Hydraulic hose 10x280		3
48	RGS 10671	Hydraulic hose 10x750		5
49	RGS 10827	Hydraulic hose 10x1550		3
50	RGS 10651	Hydraulic hose 6x800		1
51	RGS 10650	Hydraulic hose 6x1500		1
52	RGS 5001	Cable		2
53	RGS 5010	Cable		1
54	RGS 10686	Cable		1
55	RGS 10558	Cable sleeve 5mm		1
56	RGS 10490	Cable clamp		3
57	RGS 11021	Connection		1
58	RGS 10525	Wheel complete		1
59	511.600.325	Wheel complete 24x13.00-12		2

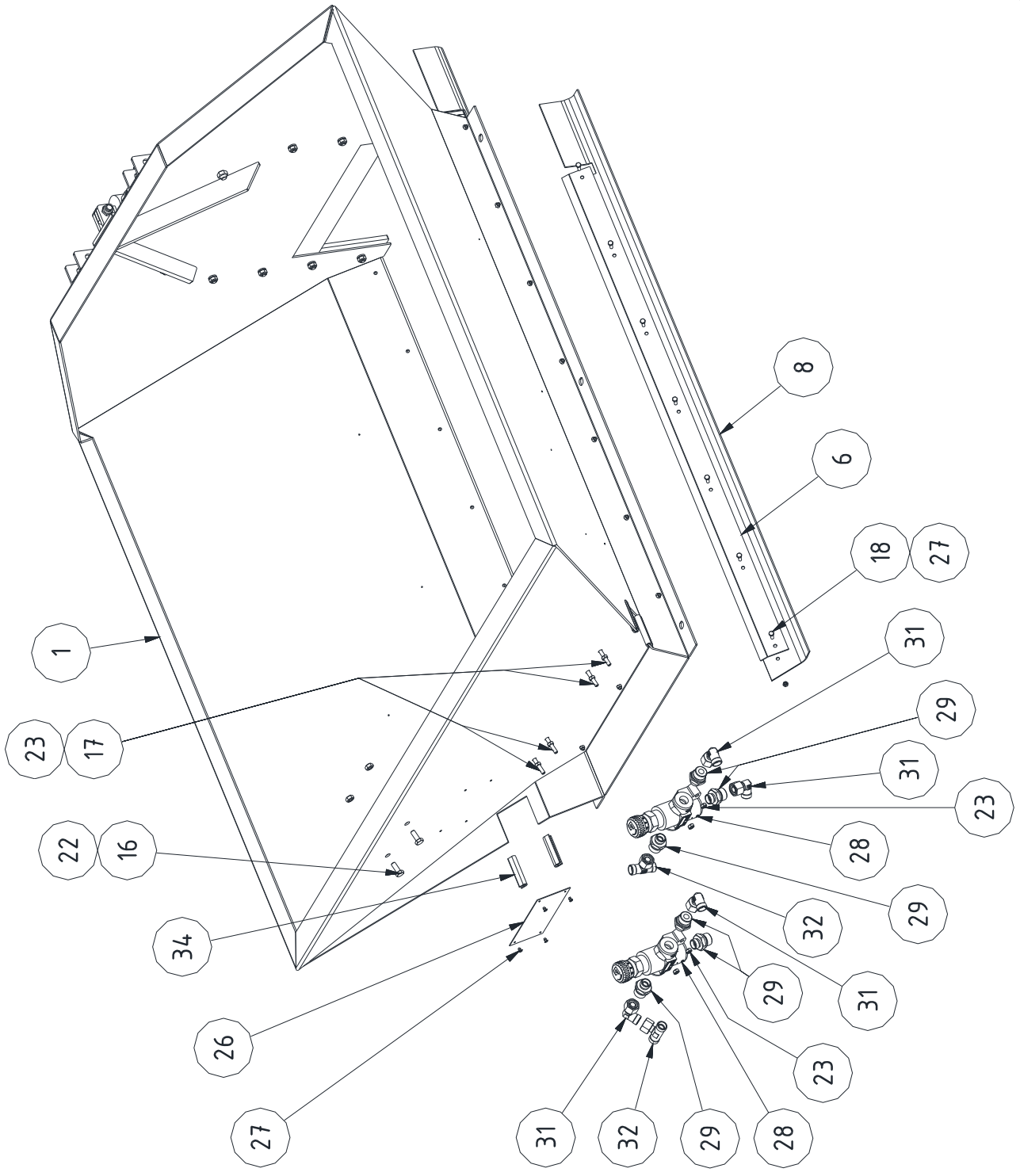
60	880.080.102	Grease nipple M8 90 degree		1
61	880.060.100	Grease nipple M6		2
62	880.060.102	Grease nipple M6 90 degree		2
63	884.100.300	Key A10x8x30		1
64	884.080.320	Key A8x7x35		2
65	RGS 10678	Bolt		12
66	RGS 5101	Wheel nut		12
67	RGS 10440	Bush		2
68	RGS 16934	Hose for handle		1
69	804.120.350	Bolt M12x35		4
70	804.100.350	Bolt M10x35		2
71	804.100.250	Bolt M10x25		10
72	804.100.160	Bolt M10x16		1
73	804.080.400	Bolt M8x40		10
74	804.080.300	Bolt M8x30		10
75	804.080.200	Bolt M8x20		4
76	804.060.350	Bolt M6x35		2
77	804.060.160	Bolt M6x16		17
78	804.060.100	Bolt M6x10		4
79	804.050.120	Bolt M5x12		4
80	802.120.500	Bolt M12x50		4
81	802.101.000	Bolt M10x100		1
82	802.081.000	Bolt M8x100		2
83	802.080.750	Bolt M8x75		2
84	802.080.600	Bolt M8x60		6
85	830.080.080	Self-lock nut M8		12
86	830.120.120	Self-lock nut M12		4
87	830.100.100	Self-lock nut M10		5
88	830.080.080	Self-lock nut M8		11
89	830.060.060	Self-lock nut M6		4
90	830.050.050	Self-lock nut M5		1
91	RGS 15385	Washer		2
92	RGS 10445	Washer 40x50x1		6
93	RGS 10107	Washer		4
94	RGS 10194	Washer		4
95	RGS 10196	Washer		2
96	RGS 10550	Washer		17
97	RGS 10136	Spring washer		8
98	RGS 10135	Spring washer		10
99	RGS 10134	Spring washer		19
100	RGS 11198	Seal		1
101	RGS 11199	Gasket		1
102	RGS 10427	Hose cover		1
103	RGS 10426	Hose spiral	L= 180mm	1

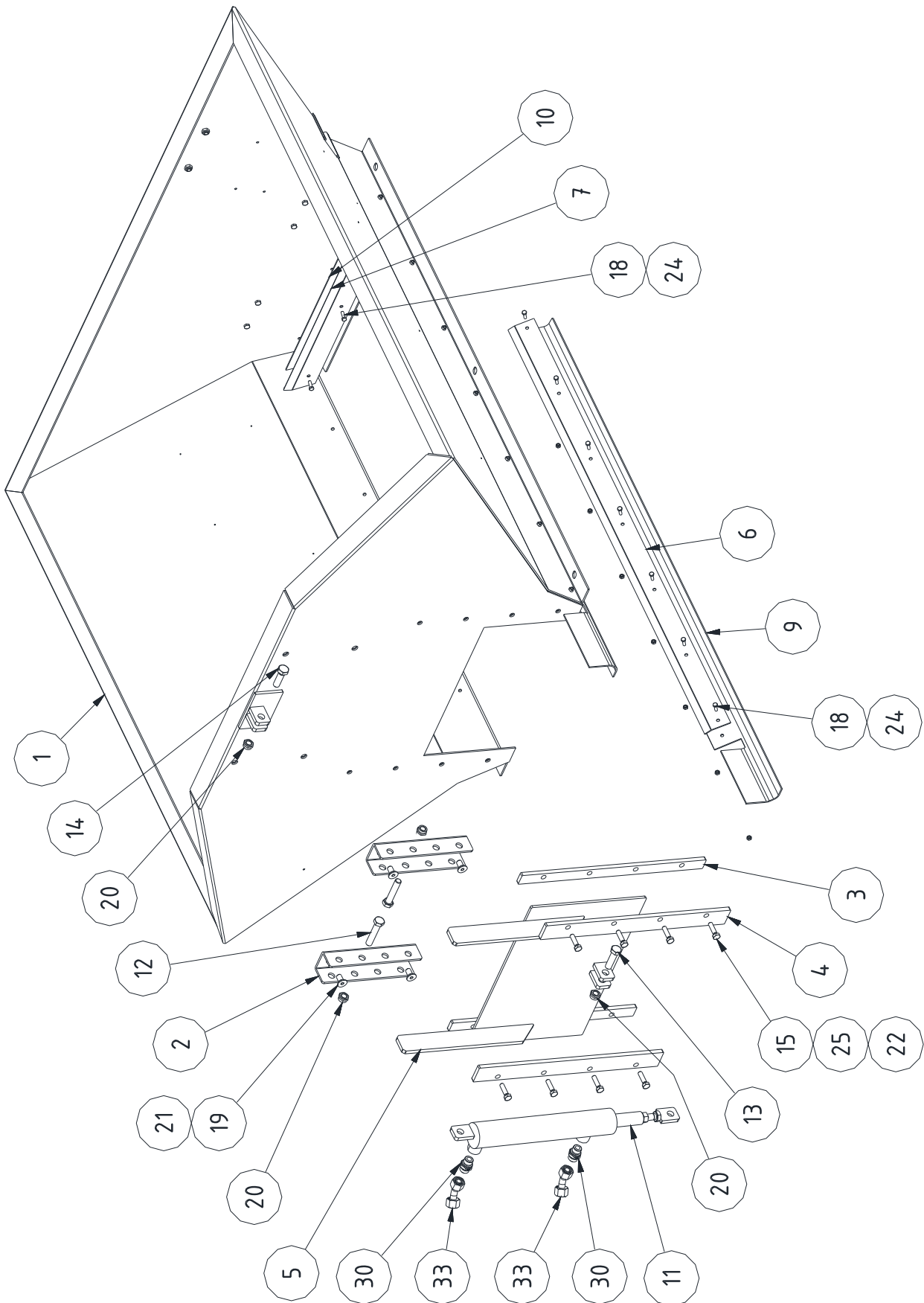




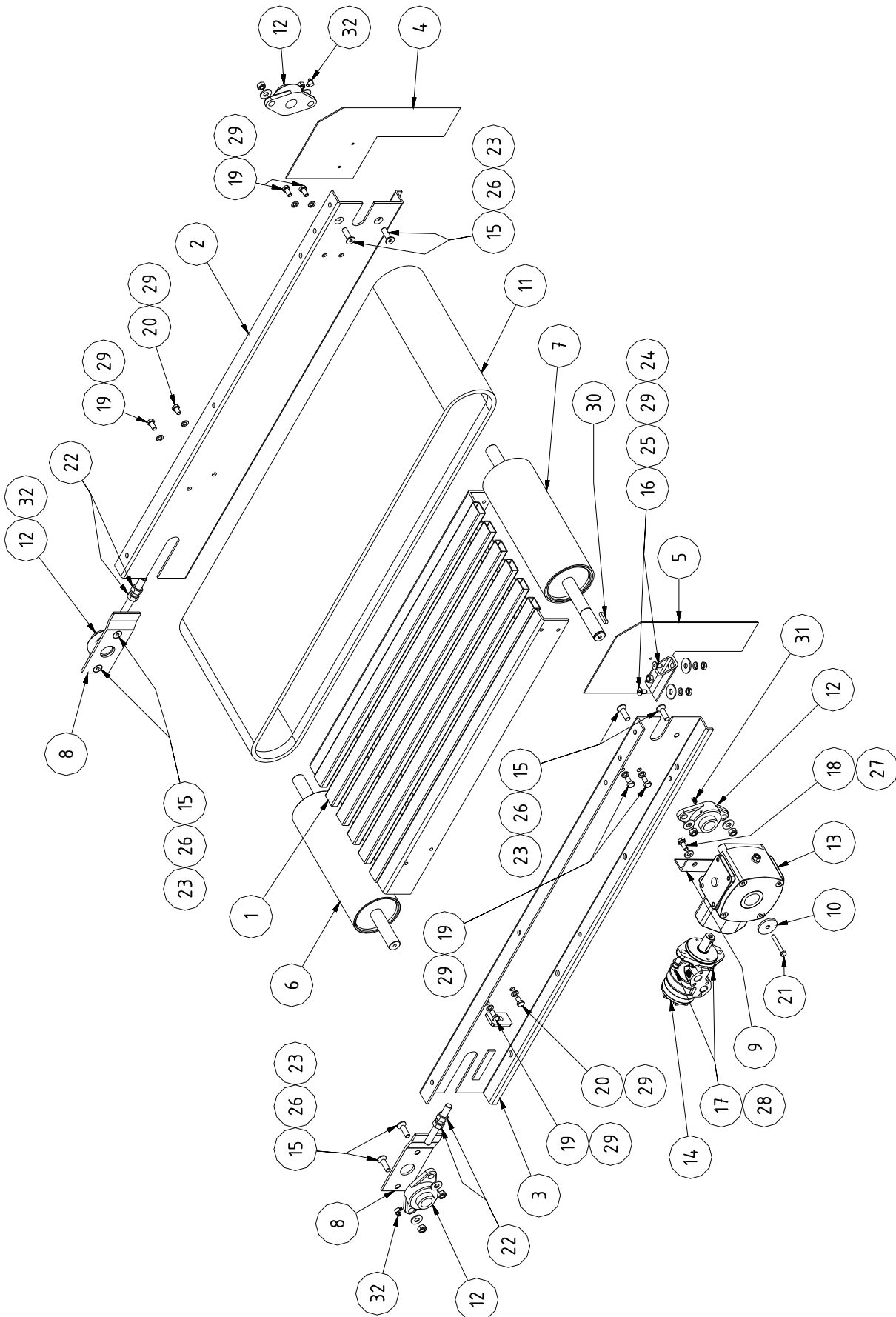
Redexim RINK DS550SP**Page 03 Code 1712**

	PART NO	DESCRIPTION	REMARKS	QUA
1		Funnel complete	See parts page 04	
2		Belt unit DS550	See parts page 05	
3		Disc unit	See parts page 06	
4	RGS 16384	Rubber clamp strip		2
5	RGS 11148	Spreading plate		1
6	RGS 16377	Safety guard front		1
7	RGS 10669	Valve		1
8	RGS 10341	One way valve		1
9	RGS 10374	Flow reducer		1
10	RGS 10662	Nipple		2
11	RGS 10660	Nipple		2
12	544.173.430	Connector		2
13	543.170.120	Nipple		2
14	544.180.400	L-Connector		3
15	544.124.126	T- Connector		2
16	RGS 11169	Straight connector 40 mm		1
17	RGS 11170	Straight connector 46 mm		1
18	RGS 10747	Hydraulic connector male		1
19	RGS 10744	Hydraulic connector female		1
20	RGS 10659	Hydraulic hose 10x400		1
21	RGS 10666	Hydraulic hose 10x1200		2
22	RGS 10830	Hydraulic hose 10x1250		1
23	RGS 10829	Hydraulic hose 10x1300		1
24	RGS 10827	Hydraulic hose 10x1550		1
25	RGS 10828	Hydraulic hose 10x1750		1
26	RGS 10745	Clamp		6
27	804.120.300	Bolt M12x30		2
28	804.100.250	Bolt M10x25		6
29	804.080.300	Bolt M8x30		2
30	804.080.200	Bolt M8x20		2
31	804.060.350	Bolt M6x35		6
32	804.050.160	Bolt M5x16		4
33	830.100.100	Self-lock nut M10		6
34	830.080.080	Self-lock nut M8		4
35	830.050.050	Self-lock nut M5		4
36	RGS 10759	Self-lock nut M8-S		2
37	864.120.030	Washer M12		12
38	864.080.030	Large washer M8		8

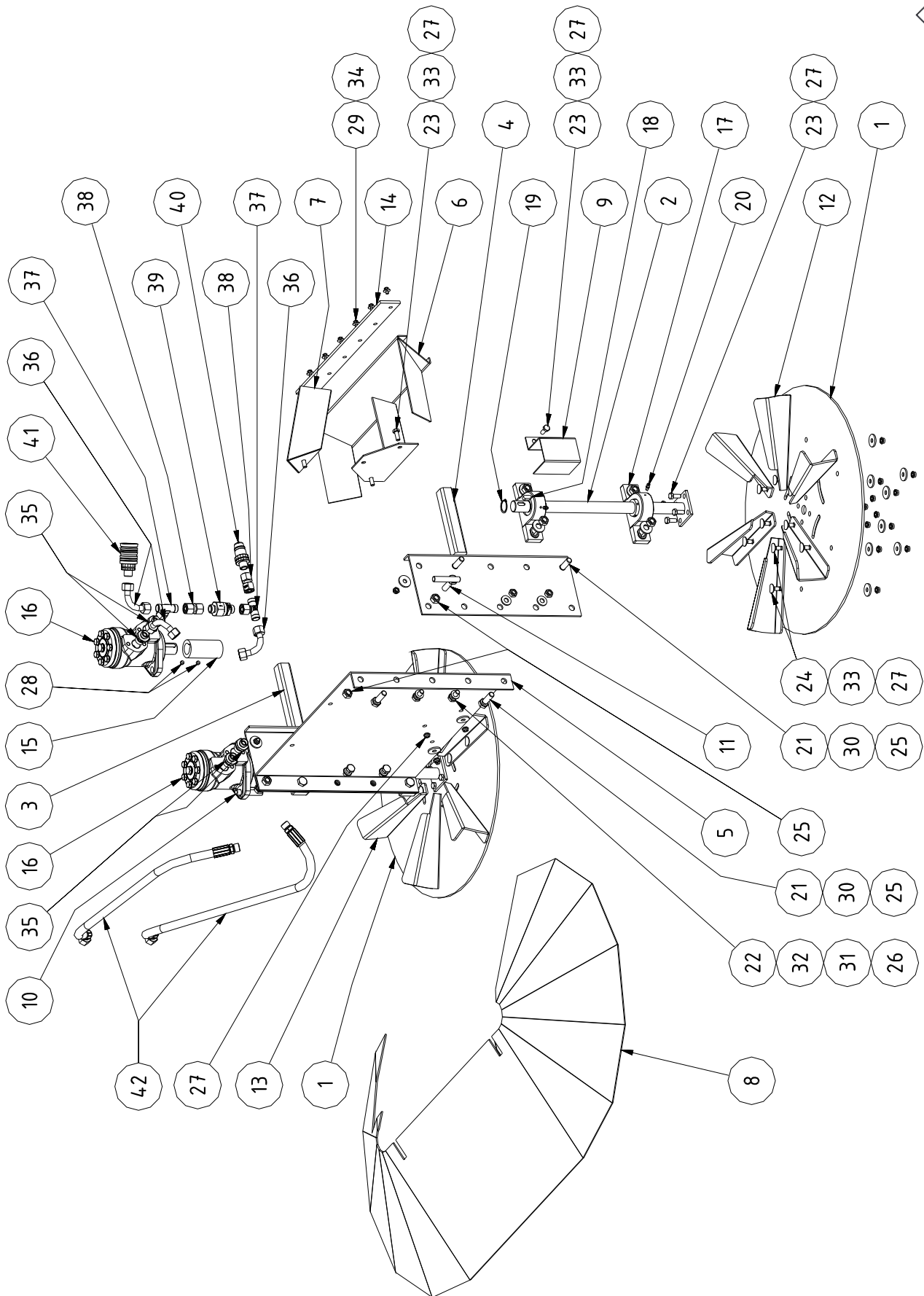




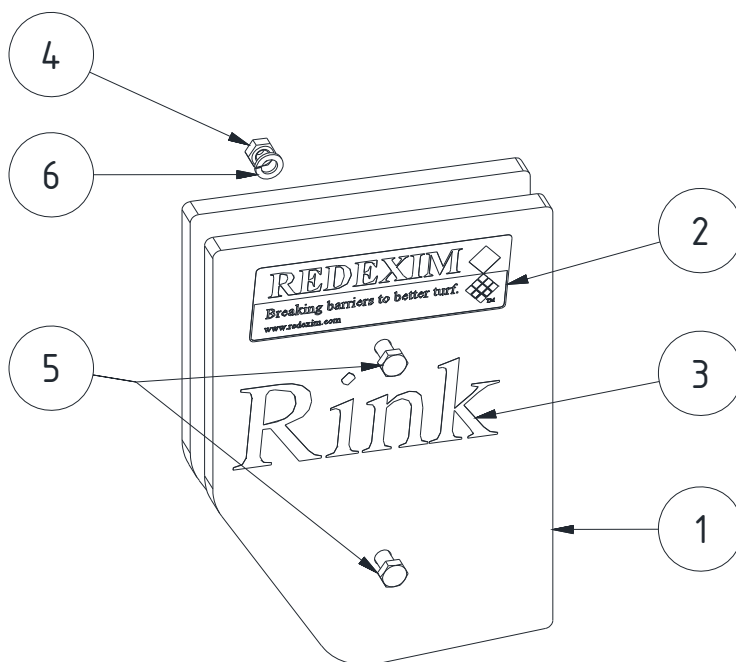
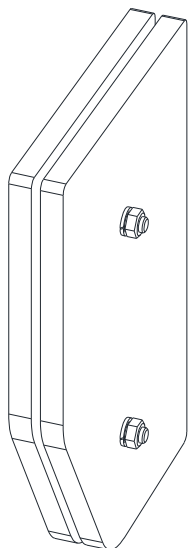
	PART NO	DESCRIPTION	REMARKS	QUA
1	RGS 16444	Hopper DS550		1
2	RGS 16360	Gate adjuster bracket		2
3	RGS 16359	Gate distance plate		2
4	RGS 16358	Gate guide plate		2
5	RGS 16409	Gate		1
6	RGS 11145	Rubber clamp strip		2
7	RGS 16375	Rubber clamp strip		1
8	RGS 10826 left	Rubber guide left		1
9	RGS 10826 right	Rubber guide right		1
10	RGS 10738	Rubber front		1
11	RGS 16457	Hydraulic cylinder		1
12	802.120.600	Bolt M12x60		2
13	804.120.450	Bolt M12x45		1
14	804.120.400	Bolt M12x40		1
15	804.080.300	Bolt M8x30		8
16	804.080.200	Bolt M8x20		2
17	804.060.350	Bolt M6x35		4
18	804.050.160	Bolt M5x16		17
19	814.100.201	Conic bolt M10x20		4
20	830.120.120	Self-lock nut M12		4
21	830.100.100	Self-lock nut M10		4
22	830.080.080	Self-lock nut M8		10
23	830.060.060	Self-lock nut M6		8
24	830.050.050	Self-lock nut M5		17
25	866.080.020	Spring washer M8		10
26	RGS 10533	Name plate		1
27	RGS 10220	Rivet 3x10		4
28	RGS 10336	Regulator 25L		2
29	511.130.402	Nipple		6
30	RGS 10660	Hydraulic fitting		2
31	544.180.400	Connector		4
32	544.124.126	T-Connector		2
33	RGS 11171	Connector 60 mm		2
34	RGS 10268	Protection rubber		4



	PART NO	DESCRIPTION	REMARKS	QUA
1	RGS 16447	Floor		1
2	RGS 16450 right	Side panel right		1
3	RGS 16450 left	Side panel left		1
4	RGS 16331 right	Sandguide right		1
5	RGS 16331 left	Sandguide left		1
6	RGS 16326	Roller front		1
7	RGS 16325	Roller rear		1
8	RGS 16112	Spanner		2
9	RGS 16249	Torque support		1
10	RGS 15385	Thick washer		1
11	RGS 10814	Conveyor belt		1
12	RGS 11001	Bearing		4
13	RGS 10511	Gearbox		1
14	RGS 10523	Hydraulic motor		1
15	814.120.400	Conical bolt M12x40		8
16	814.100.200	Conical bolt M10x20		4
17	804.120.350	Bolt M12x35		2
18	804.100.250	Bolt M10x25		2
19	804.100.200	Bolt M10x20		6
20	804.100.160	Bolt M10x16		2
21	802.080.600	Bolt M8x60		1
22	830.160.160	Self-lock nut M16		4
23	830.120.120	Self-lock nut M12		8
24	830.100.100	Self-lock nut M10		4
25	864.080.031	Large washer M8		4
26	864.120.030	Washer M12		8
27	864.100.030	Washer M10		2
28	866.120.020	Spring washer M12		2
29	866.100.020	Spring washer M10		12
30	884.080.352	Key 8x7x35		1
31	880.060.100	Grease nipple M6		1
32	880.060.102	Grease nipple M6 90		3

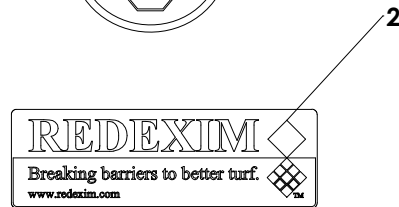
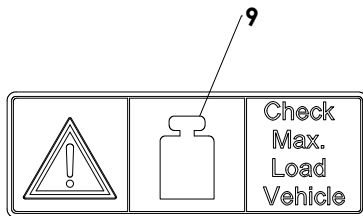
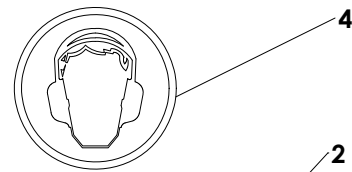
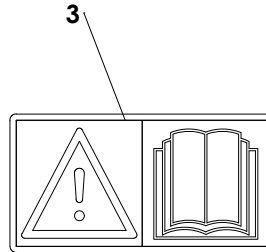


	PART NO	DESCRIPTION	REMARKS	QUA
1	RGS 16301	Disc		2
2	RGS 16329	Shaft		2
3	RGS 16337 left	Spinner shaft holder left		1
4	RGS 16337 right	Spinner shaft holder right		1
5	RGS 16305	Rear plate		1
6	RGS 16352	Sand guide plate		1
7	RGS 16403	Sand guide		1
8	RGS 16404	Cover		1
9	RGS 16381	Disc shaft cover		2
10	RGS 16379	Torque support		1
12	RGS 16353 right	Vane right		1
13	RGS 16353 left	Vane left		6
14	RGS 10796	Rubber strip		6
15	RGS 15137	Connection sleeve		1
16	RGS 10140	Hydraulic motor		2
17	RGS 10133	Bearing		2
18	884.080.200	Key 8x7x20		4
19	870.025.120	Circlip		2
20	RGS 10497	Grease nipple		2
21	804.120.400	Bolt M12x40		4
22	804.100.250	Bolt M10x25		8
23	804.080.200	Bolt M8x20		4
24	820.080.200	Mushroom head bolt M8x20		12
25	830.120.120	Self-Lock Nut M12		24
26	830.100.100	Self-Lock Nut M10		12
27	830.080.080	Self-Lock Nut M8		4
28	818.080.080	Set screw M8x8		37
30	864.120.030	Washer M12		4
31	864.100.030	Washer M10		6
33	864.080.031	Large washer M8		8
35	544.130.402	Fitting		4
36	RGS 19010	Connector 60 mm		4
37	544.124.126	T-connector		28
38	RGS 10040	Straight nipple pre mounted		6
39	RGS 10341	Reverse valve		4
40	RGS 10747	HD male		3
41	RGS 10744	HD female		2
42	RGS 10671	Hydraulic hose 10x750		2



Redexim RINK DS550SP**Page 07 Code 1712**

	PART NO	DESCRIPTION	REMARKS	QUA
1	RGS 17185	Weight plate		4
2	900.260.403	Logo Label		2
3	933.260.402	Decall Rink		2
4	804.100.500	Bolt M10x50		4
5	830.100.100	Self-lock nut M10		4
6	866.100.020	Spring washer M10		4



Rink

6

DS

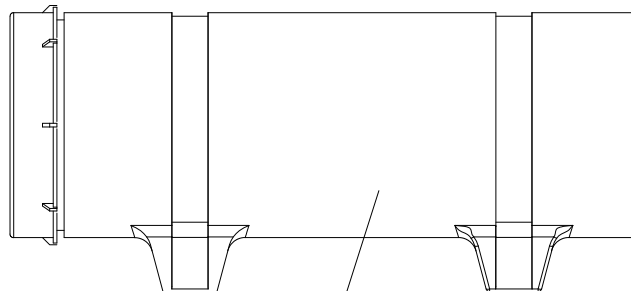
7

550

5

SP

10



1

ITEM	PART NUMBER	DESCRIPTION	REMARKS	QUA
1	444.803.100	Toolbox Complete		1
2	900.260.403	Logo Label		3
3	900.280.402	Safety decall manual		1
4	911.340.410	Safety decall noise		1
5	933.260.426	Decall 550		2
6	933.260.402	Decall Rink		2
7	933.260.418	Decall DS		2
8	933.280.402	Safety decall Rink Verti-Top		2
9	933.280.404	Safety decall max load		2
10	944.260.406	Decall SP		2