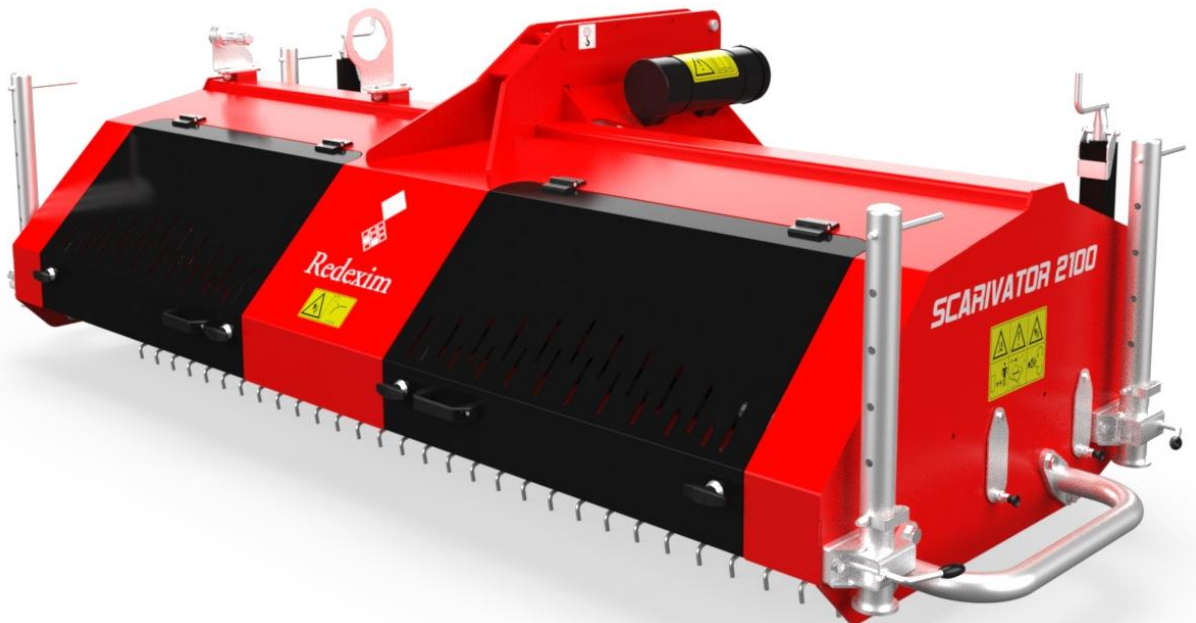


Scarivator 2100

Redexim 

PARTS MANUAL



Version: PM164.210.001-2516

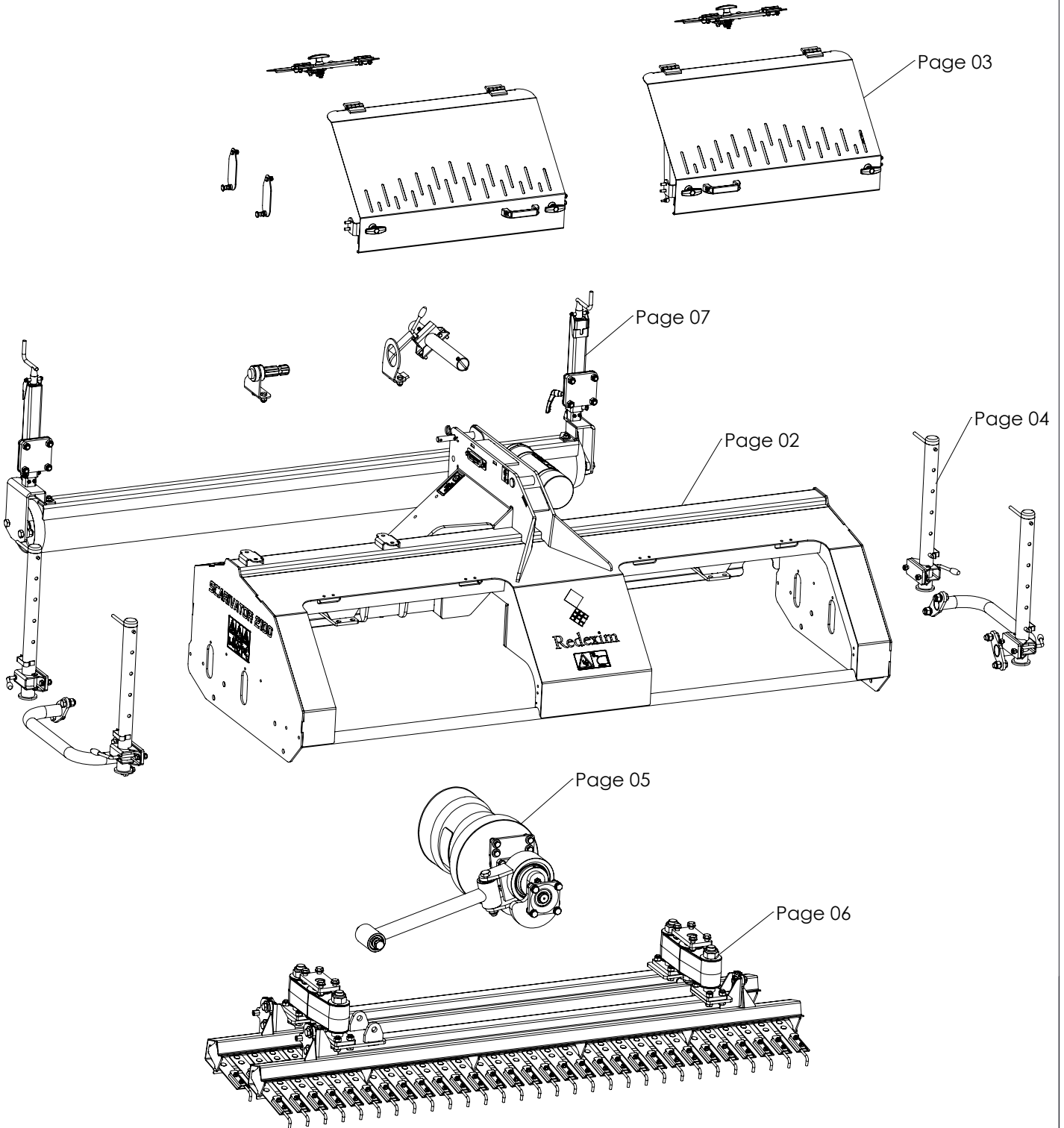
Applies to:

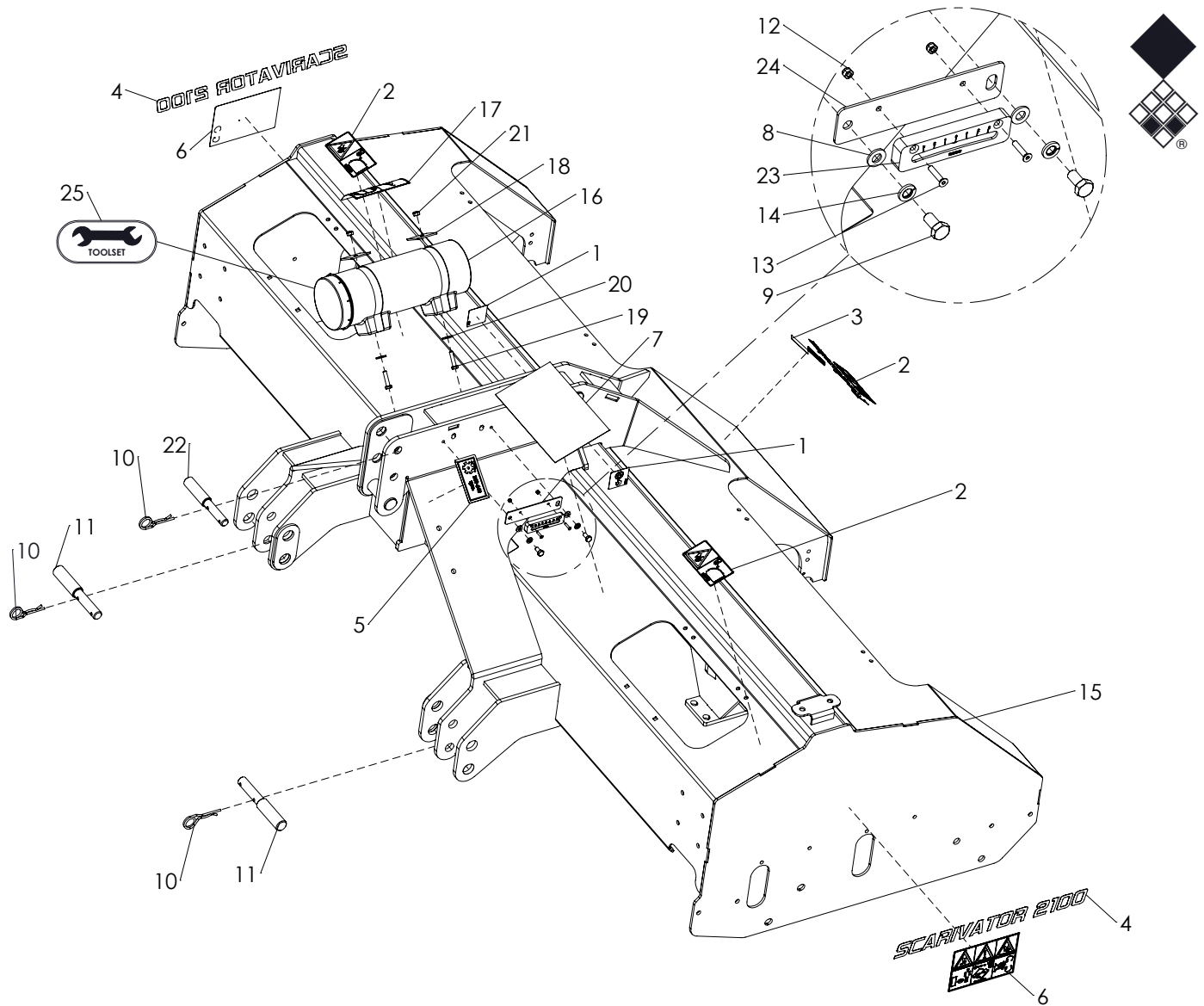
A164.210.001 Scarivator 2100



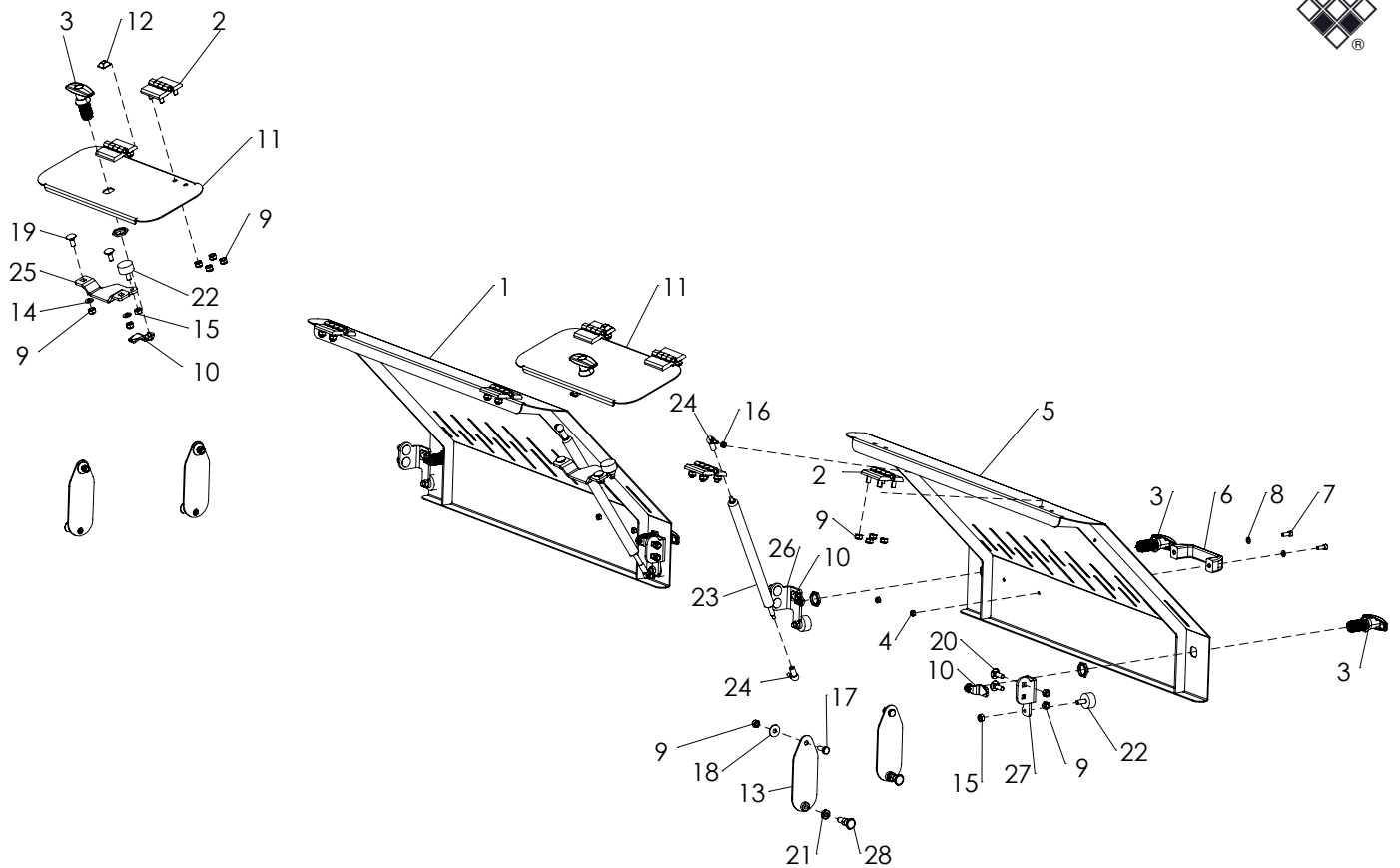
scan for manuals and product registration

Redexim B.V. | Kwekerijweg 8 | 3709 JA Zeist | The Netherlands
T: +31 (0)306 933 227 | E: redexim@redexim.com | W: www.redexim.com

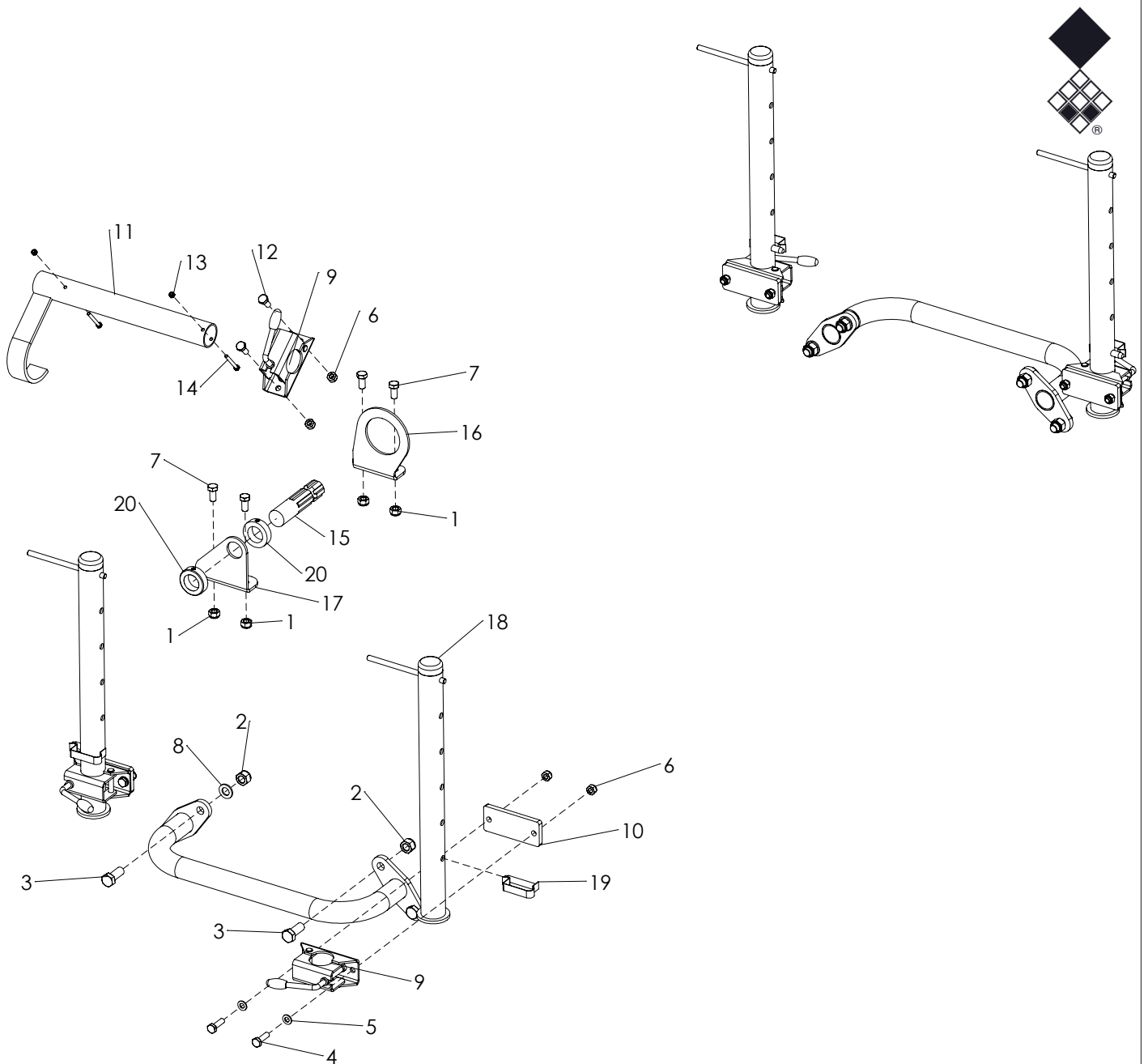




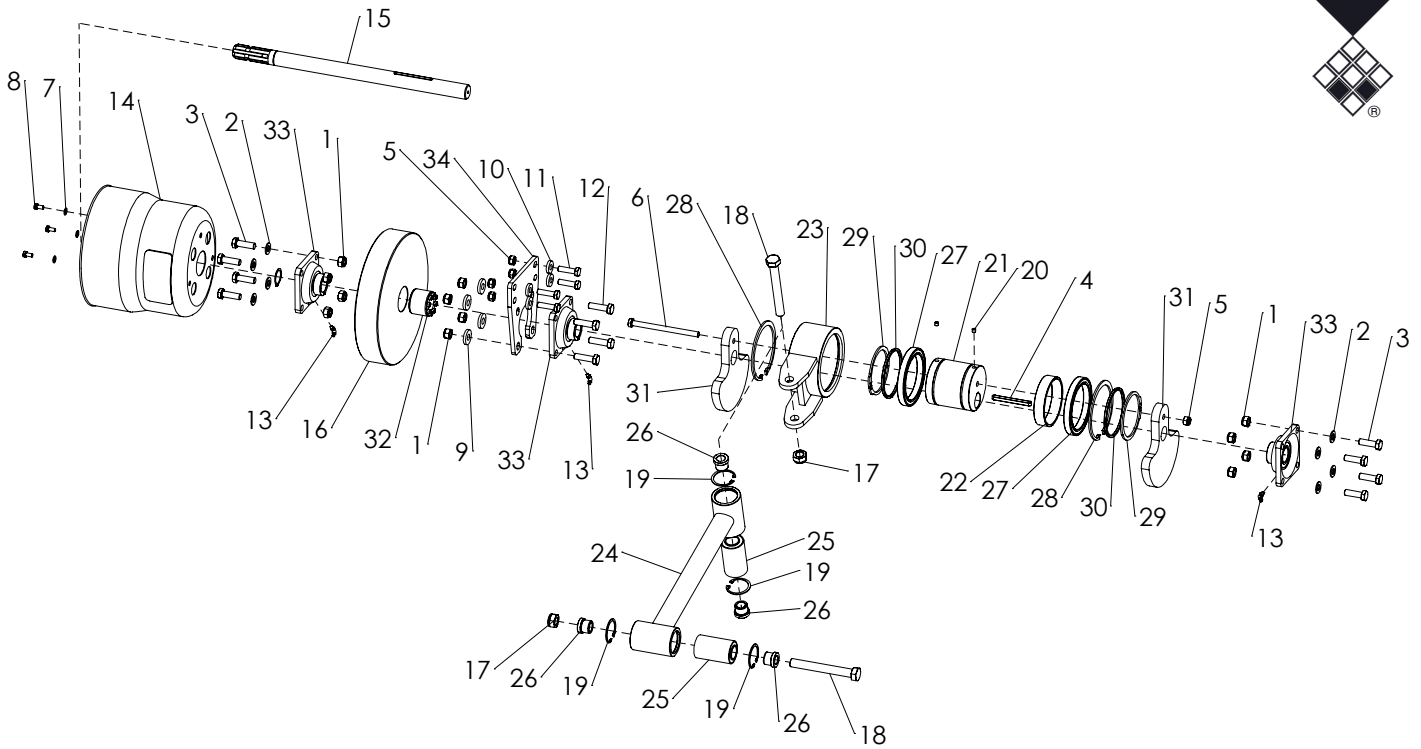
ITEM	PART NUMBER	DESCRIPTION	REMARKS	QUA
1	953.340.000	Decall lifting point		2
2	911.280.404	Decal close cover		3
3	964.260.004	Decal logo big		1
4	964.260.002	Decal Scarivator 2100		2
5	900.260.422	Decal PTO 350 540		1
6	911.280.402	Safety Decall Verti-Drain		2
7	964.340.000	Decal Scarivator pattern		1
8	864.080.030	Washer M8 - DIN 125A		2
9	804.080.160	Hex bolt M8 x 16 - ISO 4017 - Grade 8.8		2
10	523.040.800	R-Clip Round 4mm double, DIN 11024		3
11	521.221.600	3-point pin		2
12	830.040.040	SL nut M4 - DIN 985 - Grade 8		2
13	816.040.200	CSK screw M4 x 20 - DIN 7991 - Grade 8.8		2
14	866.080.020	Spring washer M8 - DIN 127		2
15	470.124.227	Frame Scarifier		1
16	444.803.100	Toolbox		1
17	900.280.402	Safety decal toolbox		1
18	468.030.530	Toolbox contraplate		2
19	804.080.350	Hex bolt M8 x 35 - ISO 4017 - Grade 8.8		2
20	864.080.024	Washer M8 large - DIN 9021		2
21	830.080.080	SL nut M8 - DIN 985 - Grade 8		2
22	521.191.600	Top link pin OS		1
23	599.111.000	Bubble inclinometer		1
24	468.021.101	Plate		1
25	468.083.060	Set of tools		1



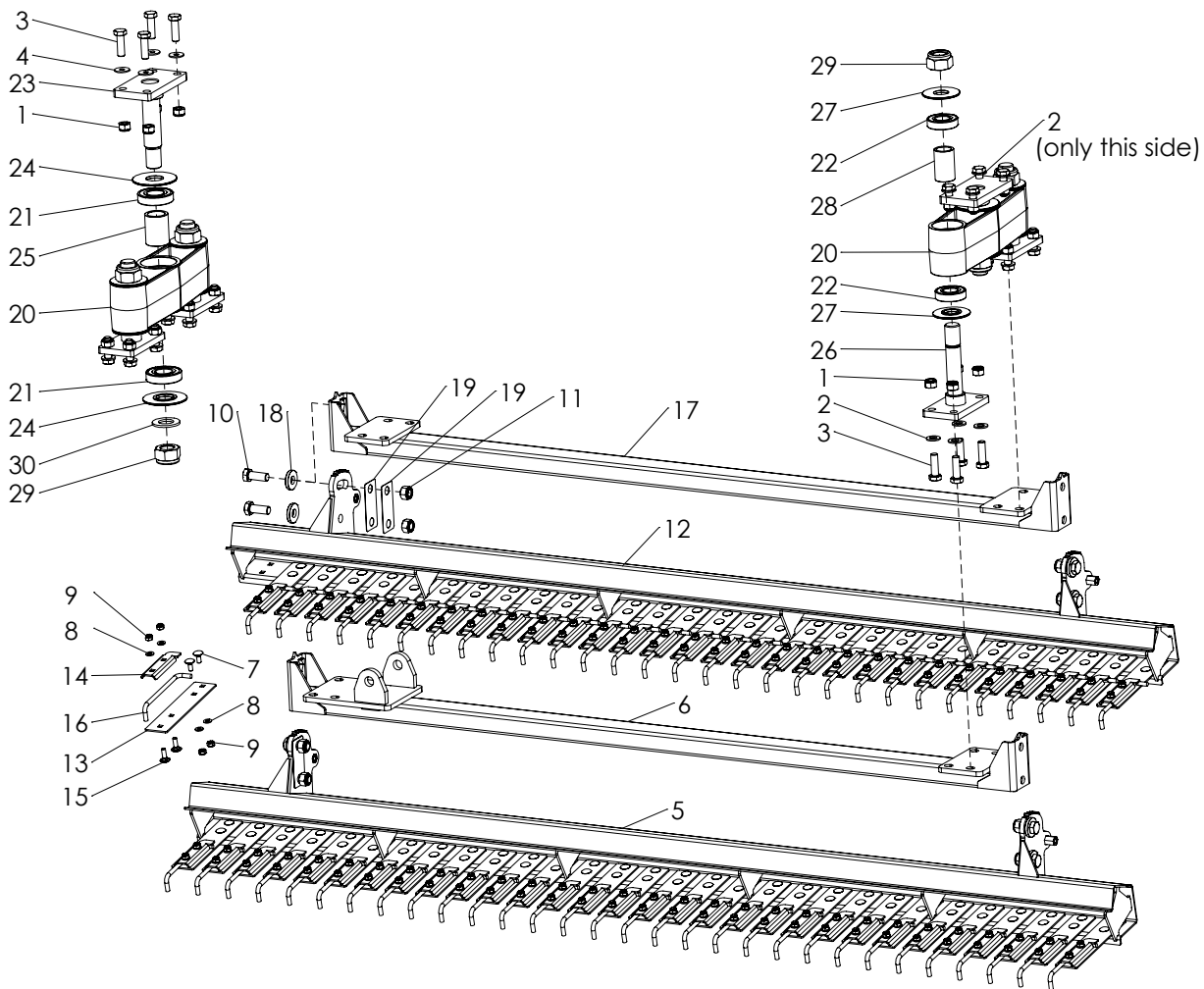
ITEM	PART NUMBER	DESCRIPTION	REMARKS	QUA
1	470.028.065	Hatch weldment left		1
2	599.606.000	Hinge		8
3	590.780.220	Lock with handle		6
4	826.060.060	Nut M6 - DIN 934 - Grade 8		4
5	470.028.063	Hatch weldment right		1
6	444.151.250	Handle		2
7	814.060.150	Hex HC screw M6 x 16 - DIN 912 - Grade 8.8		4
8	864.060.030	Washer M6 - DIN 125A		4
9	830.080.080	SL nut M8 - DIN 985 - Grade 8		48
10	590.780.221	Cam		6
11	468.023.941	Cover		2
12	572.080.200	Self adhesive buffer		2
13	468.031.550	Cover plate		4
14	864.080.030	Washer M8 - DIN 125A		4
15	826.080.080	Nut M8 - DIN 934 - Grade 8		6
16	830.060.060	SL nut M6 - DIN 985 - Grade 8		2
17	804.080.200	Hex bolt M8 x 20 - ISO 4017 - Grade 8.8		4
18	864.080.024	Washer M8 large - DIN 9021		4
19	820.080.200	MH bolt M8 x 20 - ISO 8677 - Grade 8.8		4
20	820.080.250	MH bolt M8 x 25 - ISO 8677 - Grade 8.8		8
21	826.100.072	Low nut M10 x 1.25 - ISO 8675 - Grade 04		4
22	572.300.150	Vibration damper		6
23	571.205.450	Damper, stroke 250mm, 250N		2
24	579.350.510	Ball joint M6 - DIN 71802 - seal - right thread		4
25	468.051.521	Hatch bracket		2
26	468.050.901	Hatch bracket L		2
27	468.050.903	Hatch bracket R		2
28	599.050.440	Indexing plunger		4



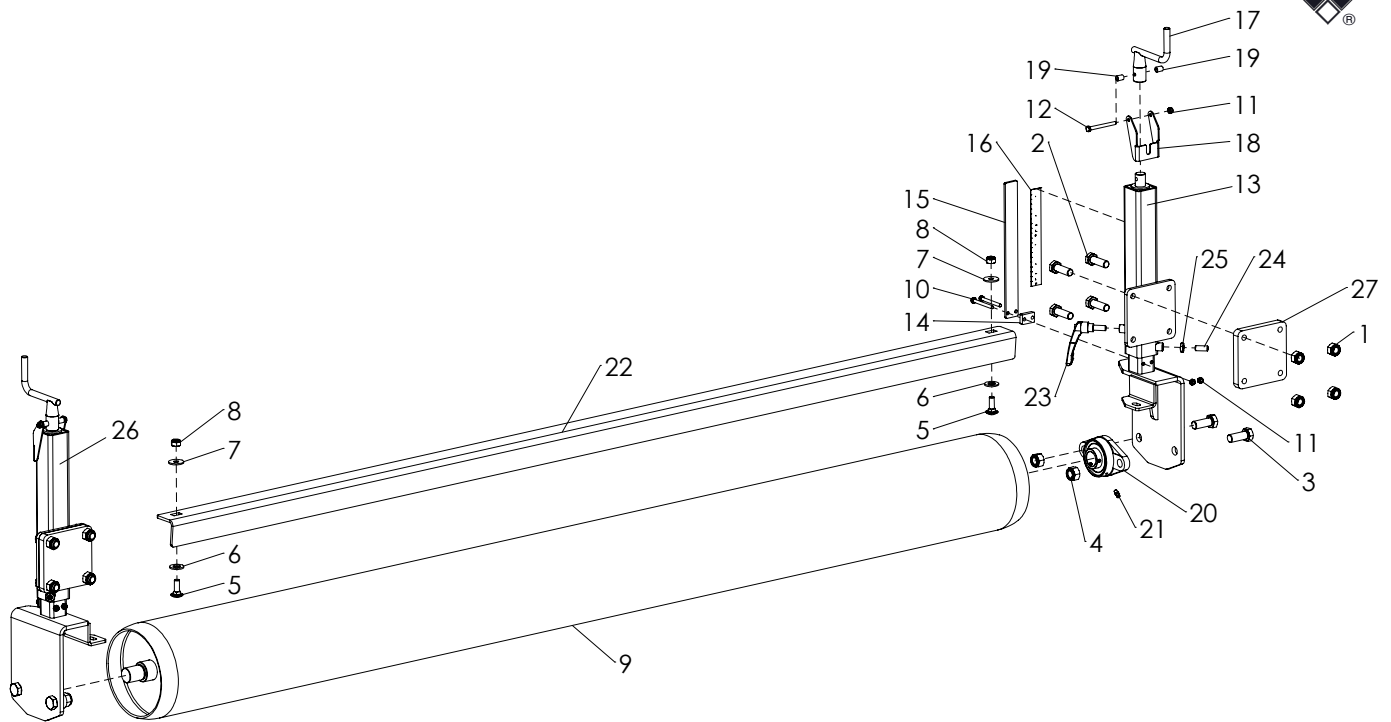
ITEM	PART NUMBER	DESCRIPTION	REMARKS	QUA
1	830.120.120	SL nut M12 - DIN 985 - Grade 10		4
2	830.160.160	SL nut M16 - DIN 985 - Grade 10		8
3	804.160.402	Hex bolt M16 x 40 - ISO 4017 - Grade 10.9		8
4	804.100.350	Hex bolt M10 x 35 - ISO 4017 - Grade 8.8		8
5	864.100.030	Washer M10 - DIN 125A		8
6	830.100.100	SL nut M10 - DIN 985 - Grade 10		10
7	804.120.250	Hex bolt M12 x 25 - ISO 4017 - Grade 8.8		4
8	864.160.030	Washer M16 - DIN 125A		4
9	527.481.300	Clamp support leg		5
10	468.101.300	Plate		4
11	478.048.942	PTP Bracket		1
12	804.100.250	Hex bolt M10 x 25 - ISO 4017 - Grade 8.8		2
13	830.060.060	SL nut M6 - DIN 985 - Grade 8		2
14	802.060.550	Hex bolt M6 x 55 - ISO 4014 - Grade 8.8		2
15	616.351.502	Splined shaft 1.3/8 L150		1
16	468.051.901	PTO support plate		1
17	468.061.201	Plate		1
18	460.483.061	Support leg		4
19	523.120.550	Lock pin ø12		4
20	868.350.160	Lock collar Ø35 - zinc plated - DIN 705A		2



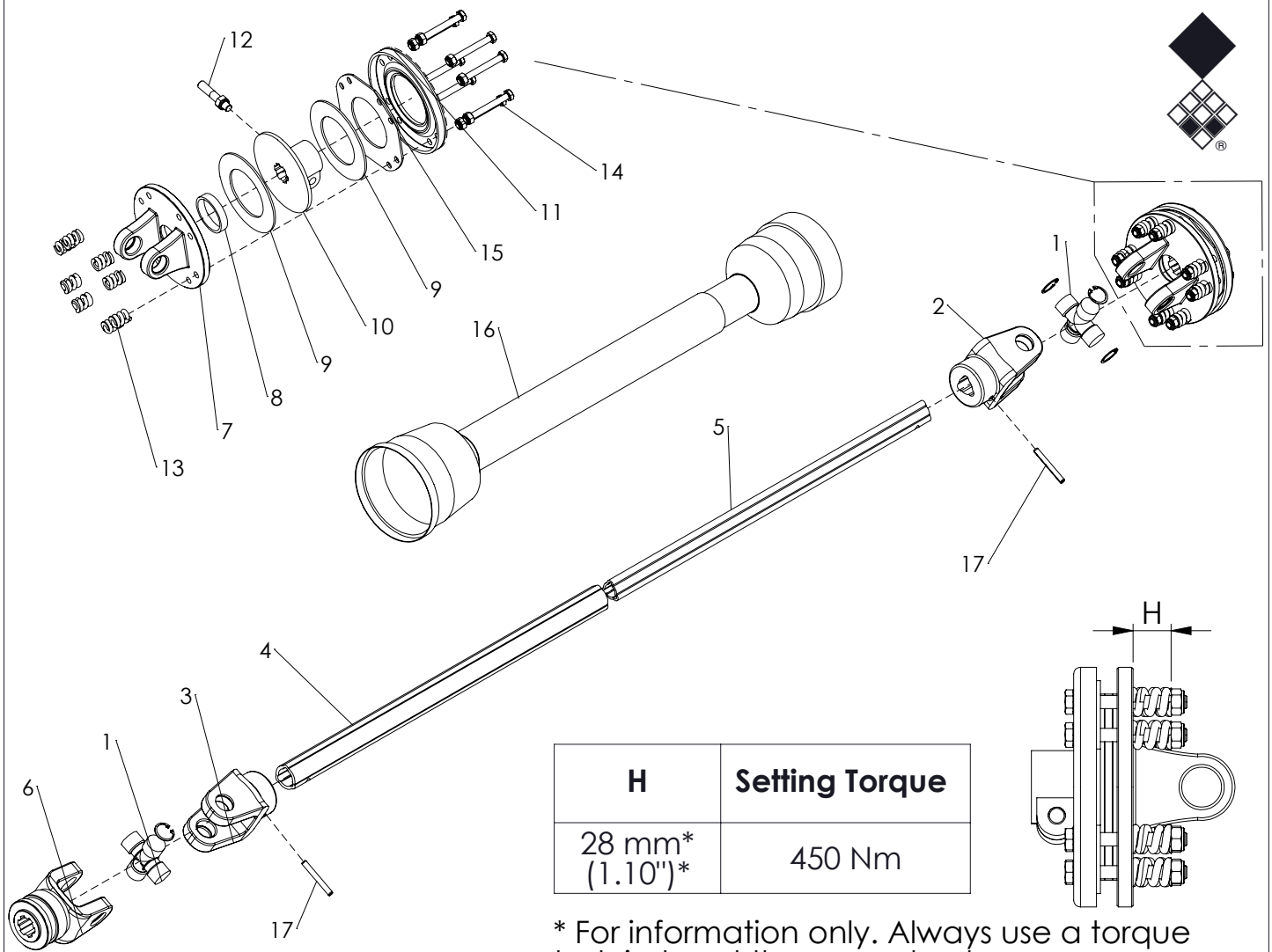
ITEM	PART NUMBER	DESCRIPTION	REMARKS	QUA
1	830.140.140	SL nut M14 - DIN 985 - Grade 10		12
2	864.140.030	Washer M14 - DIN 125A		8
3	804.140.450	Hex bolt M14 x 45 - ISO 4017 - Grade 8.8		8
4	884.101.000	Key 10x8x100 - DIN 6885		1
5	830.120.120	SL nut M12 - DIN 985 - Grade 10		5
6	802.121.700	Hex bolt M12 x 170 - ISO 4014 - Grade 8.8		1
7	864.080.030	Washer M8 - DIN 125A		3
8	804.080.160	Hex bolt M8 x 16 - ISO 4017 - Grade 8.8		3
9	864.140.063	Washer M14 heavy - DIN 7349		4
10	864.120.063	Washer M12 heavy - DIN 7349		4
11	804.120.450	Hex bolt M12 x 45 - ISO 4017 - Grade 8.8		4
12	804.140.500	Hex bolt M14 x 50 - ISO 4017 - Grade 8.8		4
13	880.060.104	Grease nipple M6 - DIN 71412 - 45°		3
14	629.275.244	PTO Cover 4xØ30 92x92		1
15	472.356.002	Splined shaft 600L 1-3/8		1
16	468.603.202	Flywheel		1
17	830.200.200	SL nut M20 - Class 8 - h=17mm		2
18	802.201.601	Hex bolt M20 x 160 - ISO 4014 - Grade 10.9		2
19	872.055.200	Circlip D=55 - DIN 472		4
20	818.080.080	Set screw M8 x 8 - DIN 913		2
21	472.951.021	Eccentric shaft		1
22	402.110.260	Distance Bush		1
23	462.080.264	Eccentric bearing housing		1
24	462.103.548	Connecting rod		1
25	752.300.940	Heavy-Duty Steel Rubber Bush PHO-V		2
26	412.200.280	Bush		4
27	713.110.160	Bearing 61822-2RS		2
28	872.140.400	Circlip D=140 - DIN 472		2
29	870.110.400	Circlip d=110 - DIN 471		2
30	402.110.050	Distance Bush		2
31	468.202.011	Balance weight		2
32	669.350.510	Locking assembly COM-LL bore 35mm		1
33	741.350.510	Bearing PCJ35-XL-N		3
34	468.102.002	Plate		1



ITEM	PART NUMBER	DESCRIPTION	REMARKS	QUA
1	830.140.140	SL nut M14 - DIN 985 - Grade 10		24
2	864.140.030	Washer M14 - DIN 125A		20
3	804.140.450	Hex bolt M14 x 45 - ISO 4017 - Grade 8.8		24
4	864.100.031	Washer M10 large - DIN 9021		4
5	470.147.922	Lower frame rake beam		1
6	462.103.918	Upper frame rake beam driven		1
7	820.080.200	MH bolt M8 x 20 - ISO 8677 - Grade 8.8		120
8	864.080.030	Washer M8 - DIN 125A		240
9	830.080.080	SL nut M8 - DIN 985 - Grade 8		240
10	804.160.400	Hex bolt M16 x 40 - ISO 4017 - Grade 8.8		8
11	830.160.160	SL nut M16 - DIN 985 - Grade 10		8
12	470.147.922	Lower frame rake beam		1
13	468.032.205	Leaf spring		60
14	468.031.144	Clamp rake tine 8mm		60
15	820.080.250	MH bolt M8 x 25 - ISO 8677 - Grade 8.8		120
16	364.081.560	Rake tine 8mm		60
17	462.103.919	Upper frame rake beam		1
18	864.160.063	Washer M16 heavy - DIN 7349		8
19	464.011.000	Shim 0,5mm		8
20	448.364.095	Rocker arm		1
21	713.350.170	Bearing 6207-2RSH		4
22	713.300.160	Bearing 6206-2RSH		8
23	470.160.170	Rocker arm center axis		2
24	412.310.053	Distance washer		4
25	412.310.621	Distance Bush		2
26	470.115.166	Rocker arm side axis		4
27	412.310.051	Distance washer		8
28	412.310.641	Distance Bush		4
29	830.300.300	SL nut M30 - DIN 985 - Grade 8		6
30	864.300.055	Washer M30 - DIN 125A		2



ITEM	PART NUMBER	DESCRIPTION	REMARKS	QUA
1	830.140.140	SL nut M14 - DIN 985 - Grade 10		8
2	804.140.450	Hex bolt M14 x 45 - ISO 4017 - Grade 8.8		8
3	804.160.402	Hex bolt M16 x 40 - ISO 4017 - Grade 10.9		4
4	830.160.160	SL nut M16 - DIN 985 - Grade 10		4
5	820.100.300	MH bolt M10 x 30 - ISO 8677 - Grade 8.8		2
6	864.140.030	Washer M14 - DIN 125A		2
7	864.100.031	Washer M10 large - DIN 9021		2
8	830.100.100	SL nut M10 - DIN 985 - Grade 10		2
9	488.194.216	Front roller		1
10	802.060.600	Hex bolt M6 x 60 - ISO 4014 - Grade 8.8		4
11	830.060.060	SL nut M6 - DIN 985 - Grade 8		6
12	802.060.650	Hex bolt M6 x 65 - ISO 4014 - Grade 8.8		2
13	460.506.086	Front roller spindle left		1
14	464.080.300	Distance Block		2
15	464.042.800	Height Indicator Strip, L= 280		2
16	900.260.418	Decall Ruler		2
17	474.251.162	Lever Jack		2
18	468.031.180	Lock Plate		2
19	402.070.140	Distance Bush		4
20	742.300.400	Bearing UCFL 206		4
21	880.060.100	Grease nipple M6 - DIN 71412 - 180°		2
22	468.059.210	Scraper		1
23	599.100.250	Clamping lever		2
24	818.100.250	Set screw M10 x 25 - DIN 913		2
25	826.100.500	Low nut M10 - DIN 439 - Grade 04		2
26	460.506.084	Front roller spindle right		1
27	468.151.201	Plate		2



* For information only. Always use a torque test rig to set the correct value.

ALWAYS deburr parts when cut
MEASURE correct length of PTO first
MAINTAIN slipclutch every month
NEVER USE PTO over 30 degrees
SLIPCLUTCH always on machine side

ITEM	PART NUMBER	DESCRIPTION	REMARKS	QUA
1	BEN PT152209	Universal joint assembled		2
2	BEN PT148813	Inner tube yoke		1
3	BEN PT143860	Outer tube yoke		1
4	BEN PT150516	Tubing cut to size	Cut to correct lenght	1
5	BEN PT150544	Tubing cut to size	Cut to correct lenght	1
6	BEN PT140106	End yoke with quick lock		1
7	BEN F1L04	Flange yoke		1
8	BEN F060	Bush		1
9	BEN F030/S	Lining ring		2
10	BEN F138	Hub		1
11	BEN F1180	Pressure plate		1
12	BEN 90938	Conic bolt and nut		1
13	BEN F0110	Spring		8
14	BEN F10085	Bolt and nut		8
15	BEN F070	Inner plate		1
16	BEN PT170005	Safety guard group	Cut to correct lenght	1
17	190000014	Roll Pin 8 x 65		2
	611.409.100	PTO shaft type T-40 tl 910		
	611.405.100	PTO shaft type T-40 tl 510		