

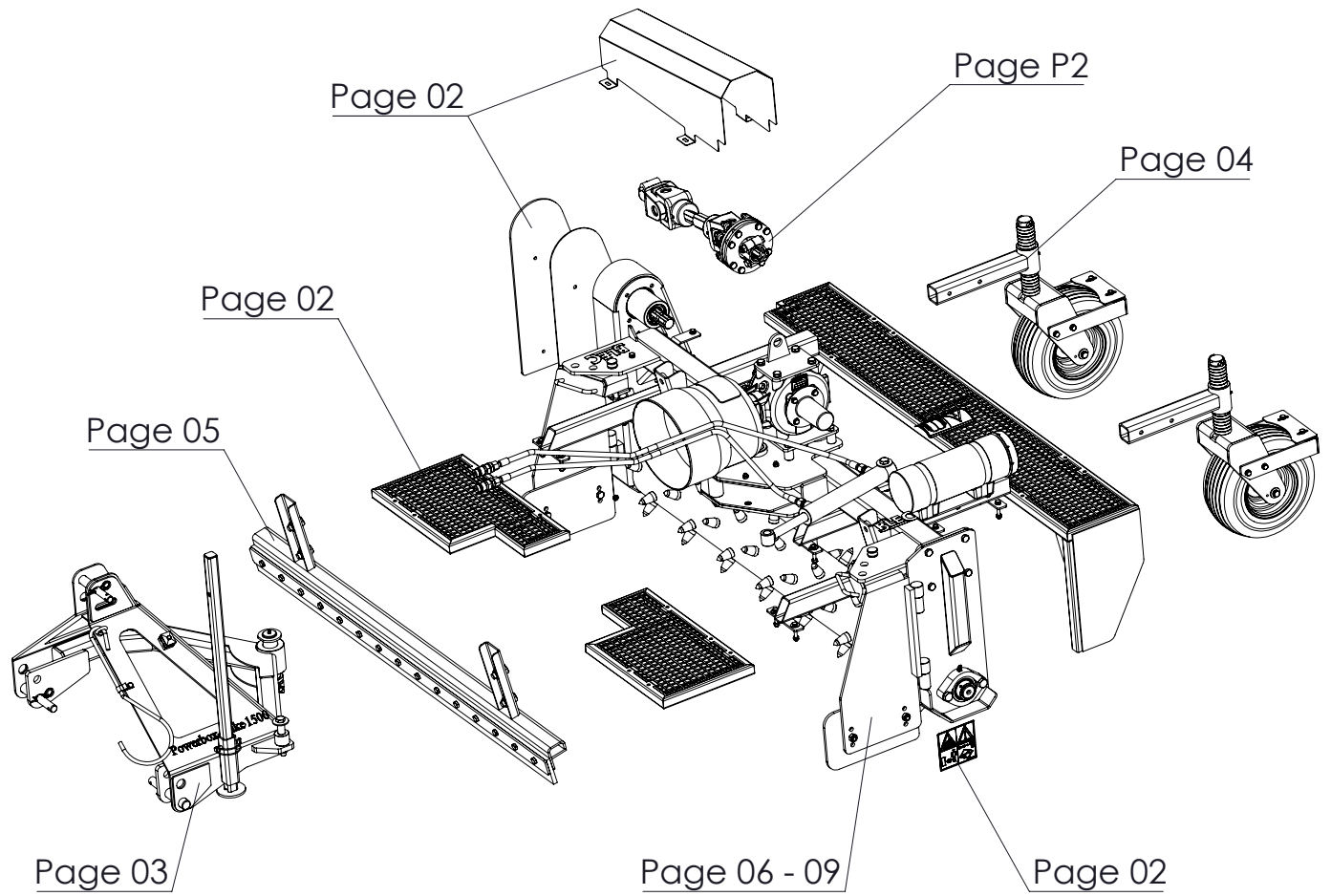
POWER BOX RAKE 1500



Version: 2434

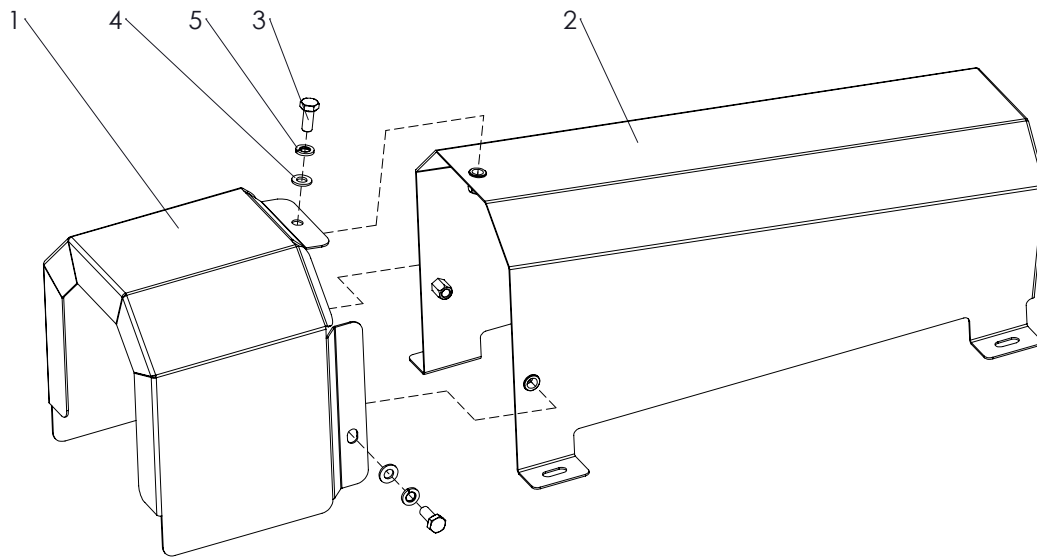


Kwekerijweg 8 | 3709JA | Zeist | The Netherlands |
T: +31 (0)306 933 227
E: redexim@redexim.com
W: www.redexim.com

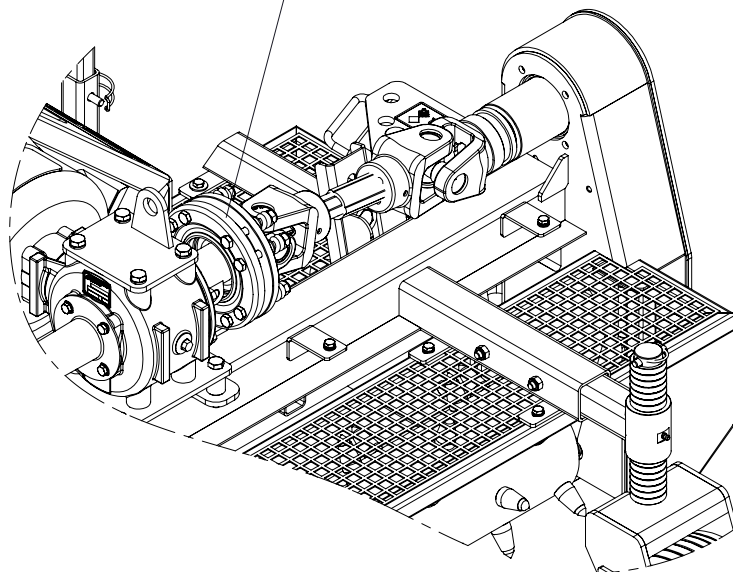




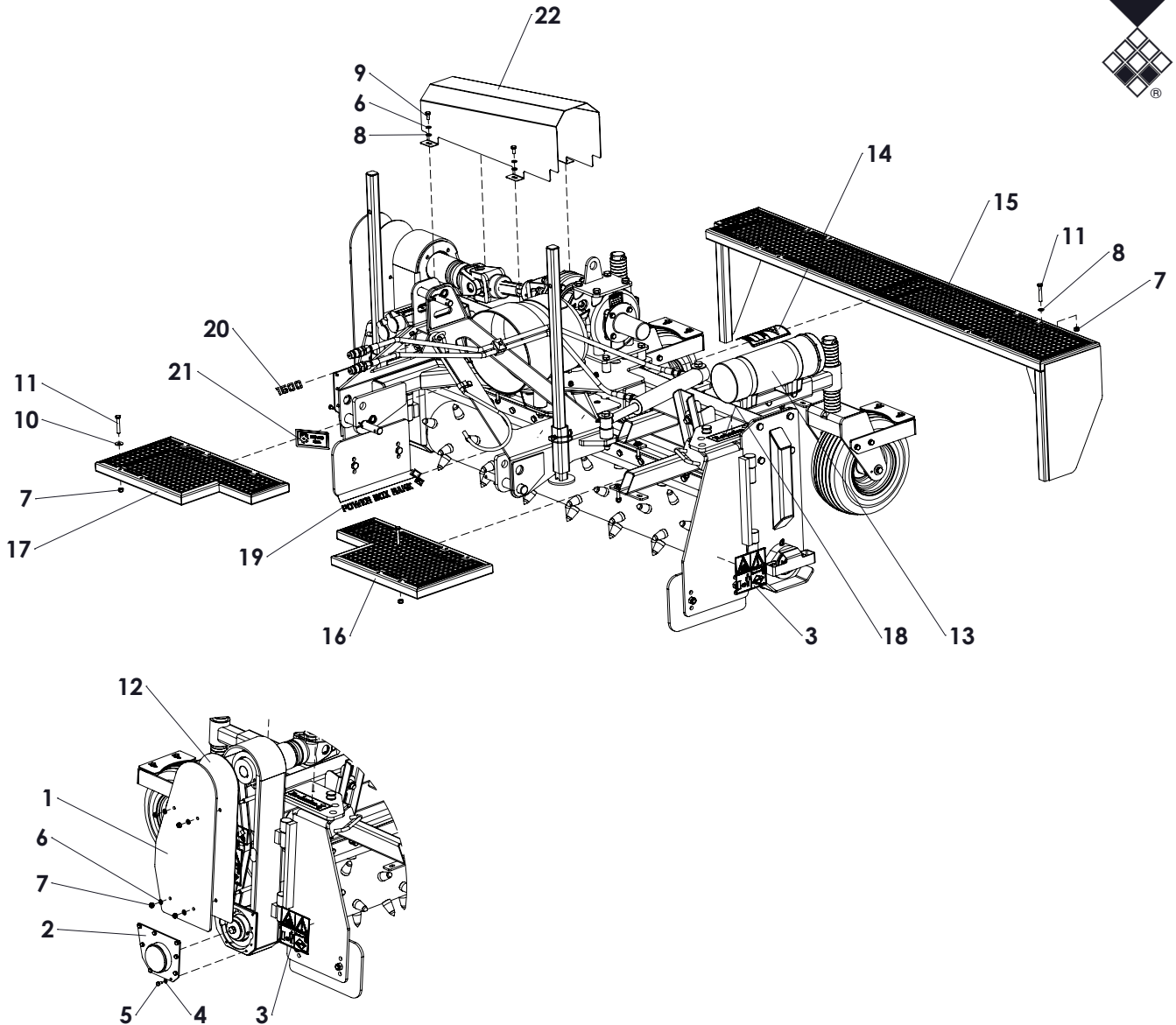
USE THIS COVER ASSEMBLY IF A BENZI PTO IS MOUNTED ON THE MACHINE.



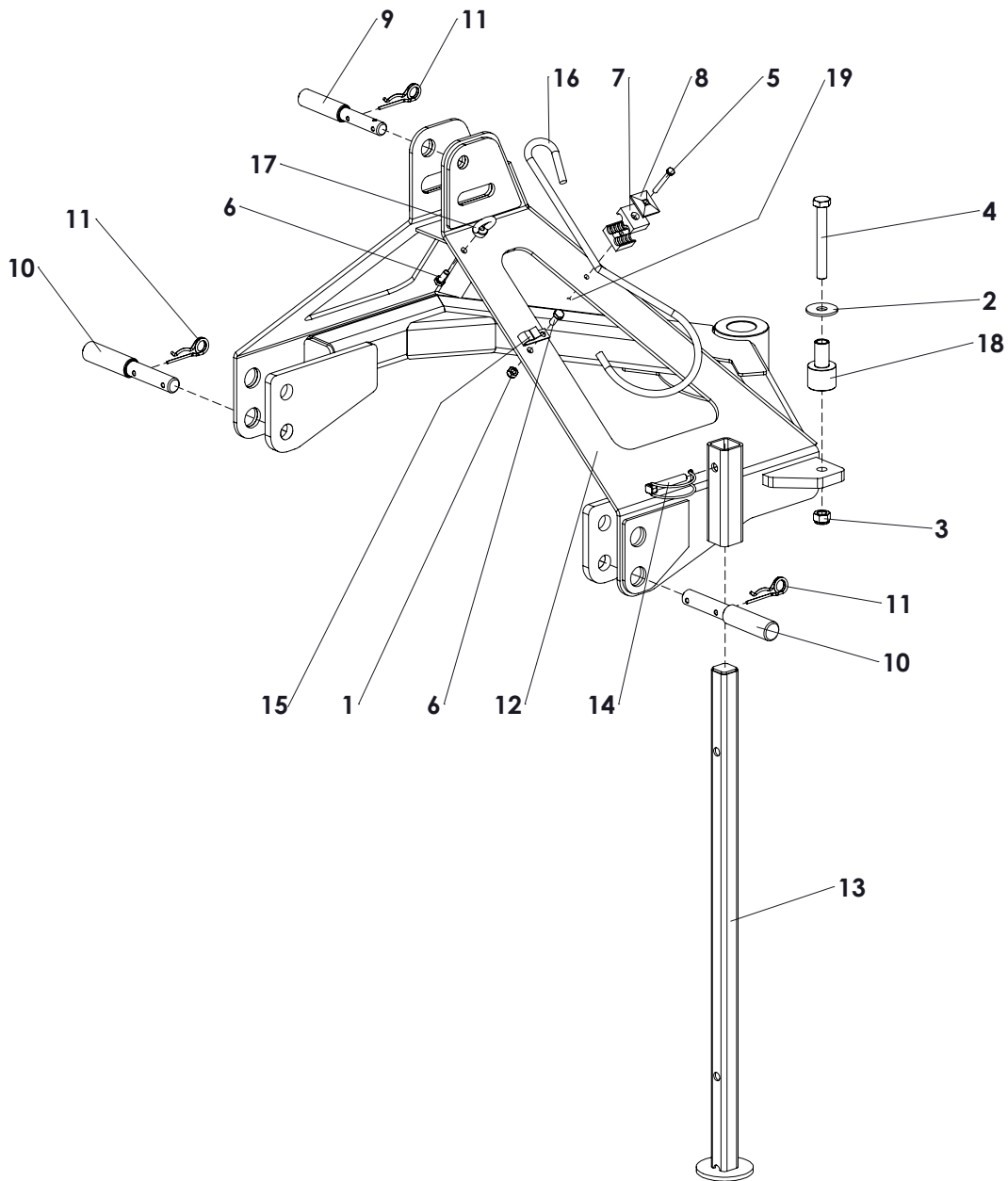
Check diameter of disc clutch:
 Comer Ø153mm
 Benzi Ø180mm



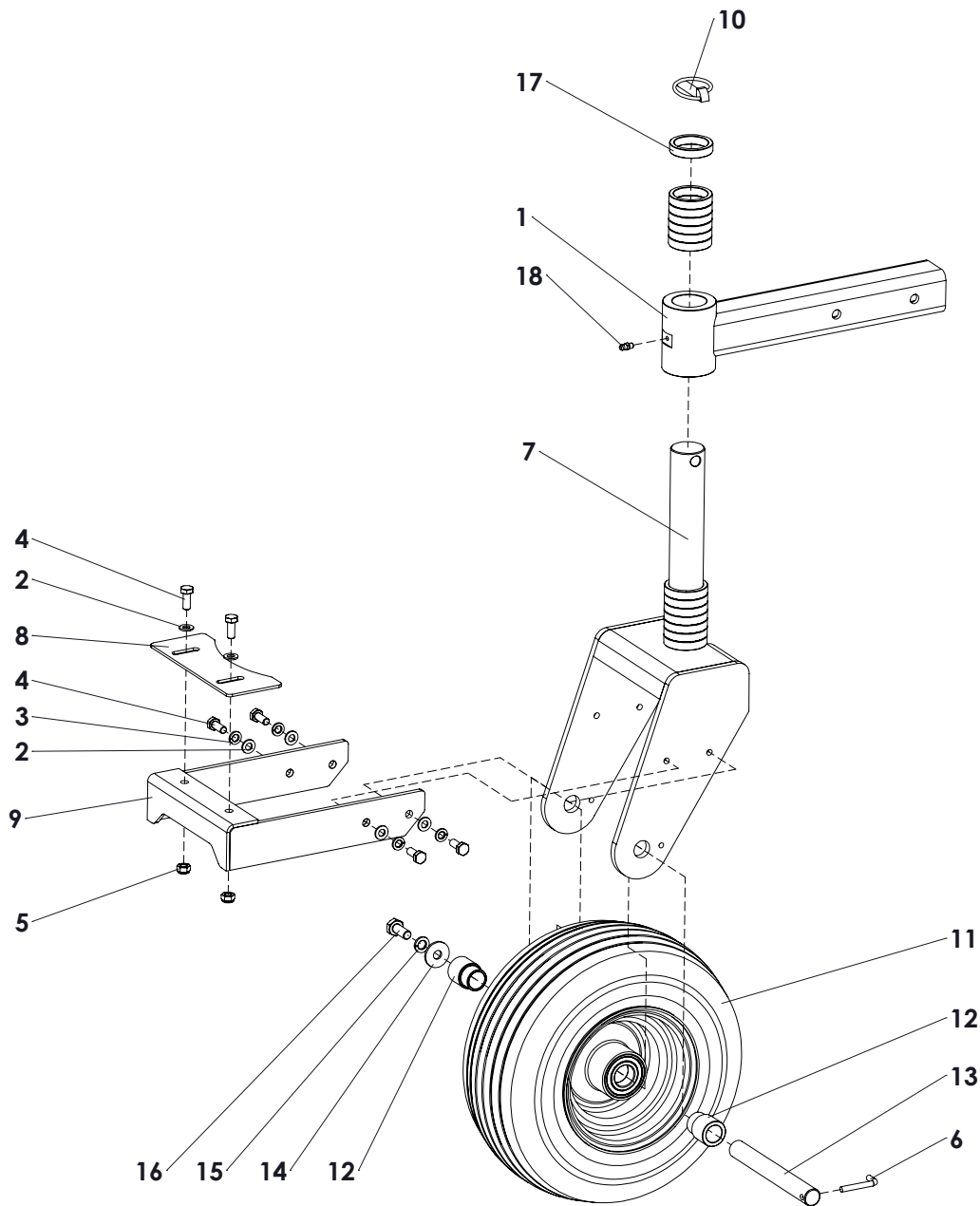
ITEM	PART NUMBER	DESCRIPTION	REMARKS	QUA
1	456.190.197	Cover		1
2	456.450.231	Cover		1
3	804.080.200	Bolt M8 x 20 - ISO 4017		3
4	864.080.030	Washer M8 - ISO 7089		3
5	866.080.020	Spring Washer M8 - DIN 127		3



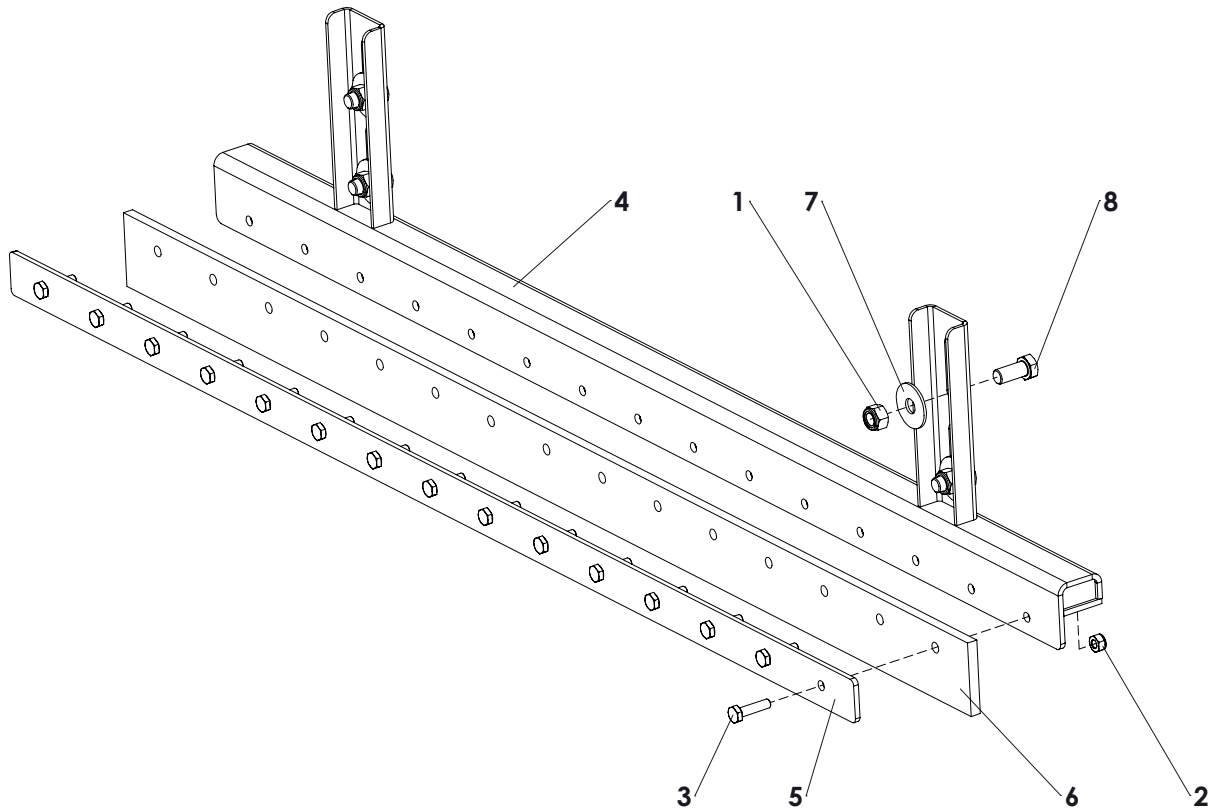
ITEM	PART NUMBER	DESCRIPTION	REMARKS	QUA
1	456.028.069	Side cover		1
2	456.041.822	Cover		1
3	921.280.402	Safety decall VS		3
4	866.060.020	Spring Washer M6 - DIN 127		8
5	804.060.120	Bolt M6 x 12 - ISO 4017		8
6	866.080.020	Spring Washer M8 - DIN 127		8
7	830.080.080	Self Lock Nut M8 - ISO 10511		34
8	864.080.030	Washer M8 - ISO 7089		13
9	804.080.160	Bolt M8 x 16 - ISO 4017		4
10	864.080.024	Large washer M8 - DIN 9021		10
11	802.080.500	Bolt M8 x 50 - ISO 4014		19
12	446.035.300	Rubber seal		1
13	444.803.100	Toolbox Complete		1
14	900.280.402	Safety decall manual		1
15	462.409.150	Grid		1
16	462.400.400	Grid		1
17	462.400.402	Grid		1
18	900.260.401	Logo Label		3
19	952.260.426	Label Powerbox Rake		2
20	952.260.427	Decal 1500		2
21	900.260.422	Decal PTO 350 540		1
22	456.450.230	Cover		1



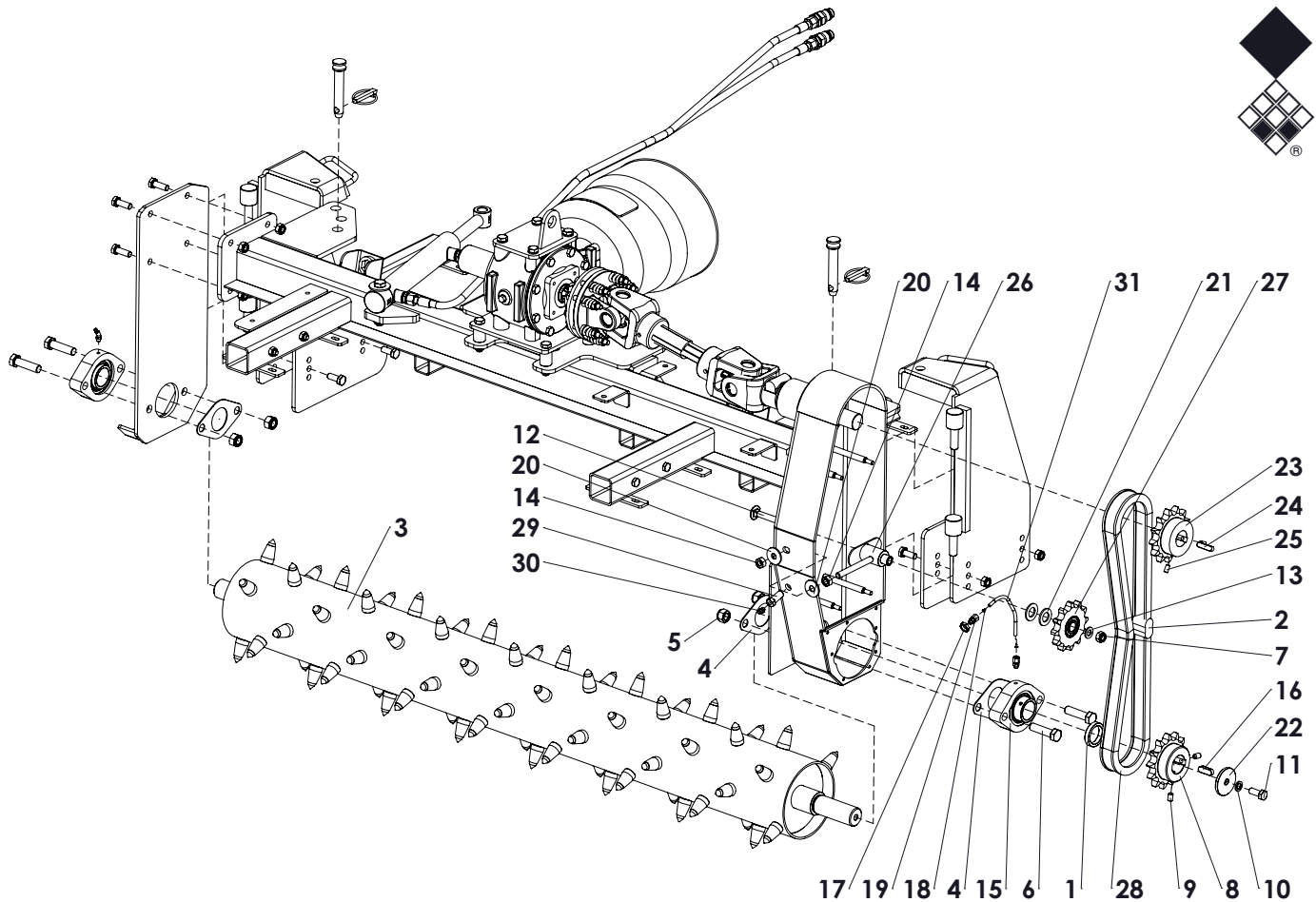
ITEM	PART NUMBER	DESCRIPTION	REMARKS	QUA
1	830.080.080	Self Lock Nut M8 - ISO 10511		1
2	864.140.031	Large washer M14 - DIN 9021		1
3	830.140.140	Self Lock Nut M14 10.9 - ISO 10511		1
4	802.141.100	Bolt M14 x 110 - ISO 4014		1
5	802.060.500	Bolt M6 x 50 - ISO 4014		1
6	804.080.200	Bolt M8 x 20 - ISO 4017		2
7	547.120.120	Hose clamp double 12mm		2
8	547.300.340	Cover plate hose clamp 2x10 - 2x12		1
9	521.191.600	Top link pin OS		1
10	521.221.600	3-point pin		2
11	523.030.750	R-Clip Round 3, DIN 11024		3
12	494.088.063	3-point frame		1
13	462.030.609	Leg		1
14	523.100.700	Pipe linch pin Ø10		1
15	464.020.820	Lock strip		1
16	472.107.100	Hook		1
17	822.080.360	Lifting Eye Nut M8 - DIN 582		1
18	404.140.670	Bush		1
19	900.260.504	Decall Blec black		1



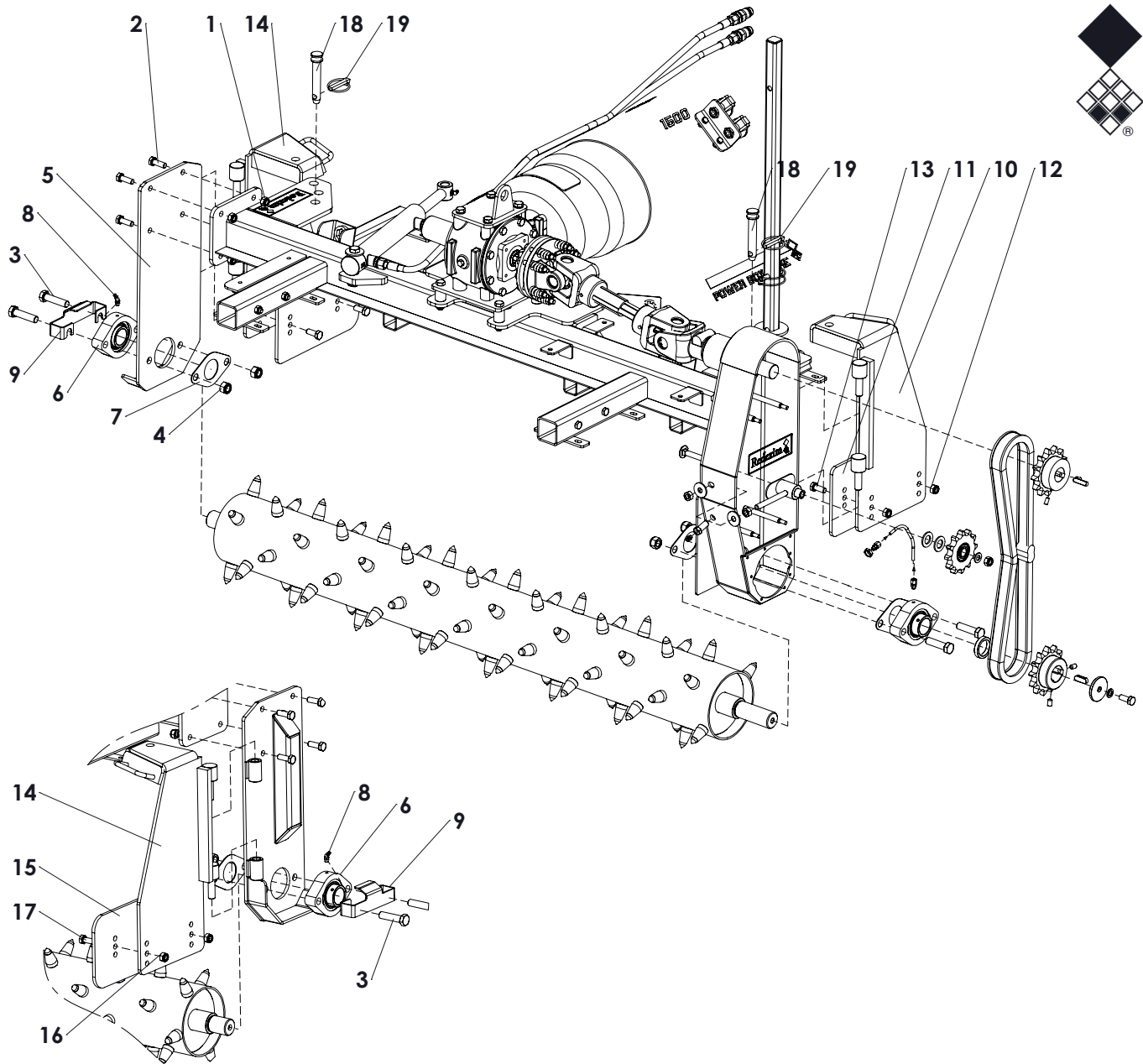
ITEM	PART NUMBER	DESCRIPTION	REMARKS	QUA
1	462.050.445	Wheel support		1
2	864.080.030	Washer M8 - ISO 7089		6
3	866.080.020	Spring Washer M8 - DIN 127		4
4	804.080.200	Bolt M8 x 20 - ISO 4017		6
5	830.080.080	Self Lock Nut M8 - ISO 10511		2
6	424.060.480	Lock pin		1
7	470.081.650	Rotating wheel fork		1
8	468.031.780	Scraper		1
9	470.062.540	Scraper frame		1
10	523.100.570	Linch Pin d10		1
11	511.325.135	Wheel AGRI 31 - 13x5.00-6		1
12	404.200.390	Distance bush Ø30/Ø20,2 L=39,3		2
13	422.201.700	Wheel shaft		1
14	864.100.031	Large washer M10 - DIN 9021		1
15	866.100.020	Spring Washer M10 - DIN 127		1
16	804.100.250	Bolt M10 x 25 - ISO 4017		1
17	406.380.100	Distance bush 10mm		14
18	880.060.100	Grease nipple M6 DIN 71412A		1



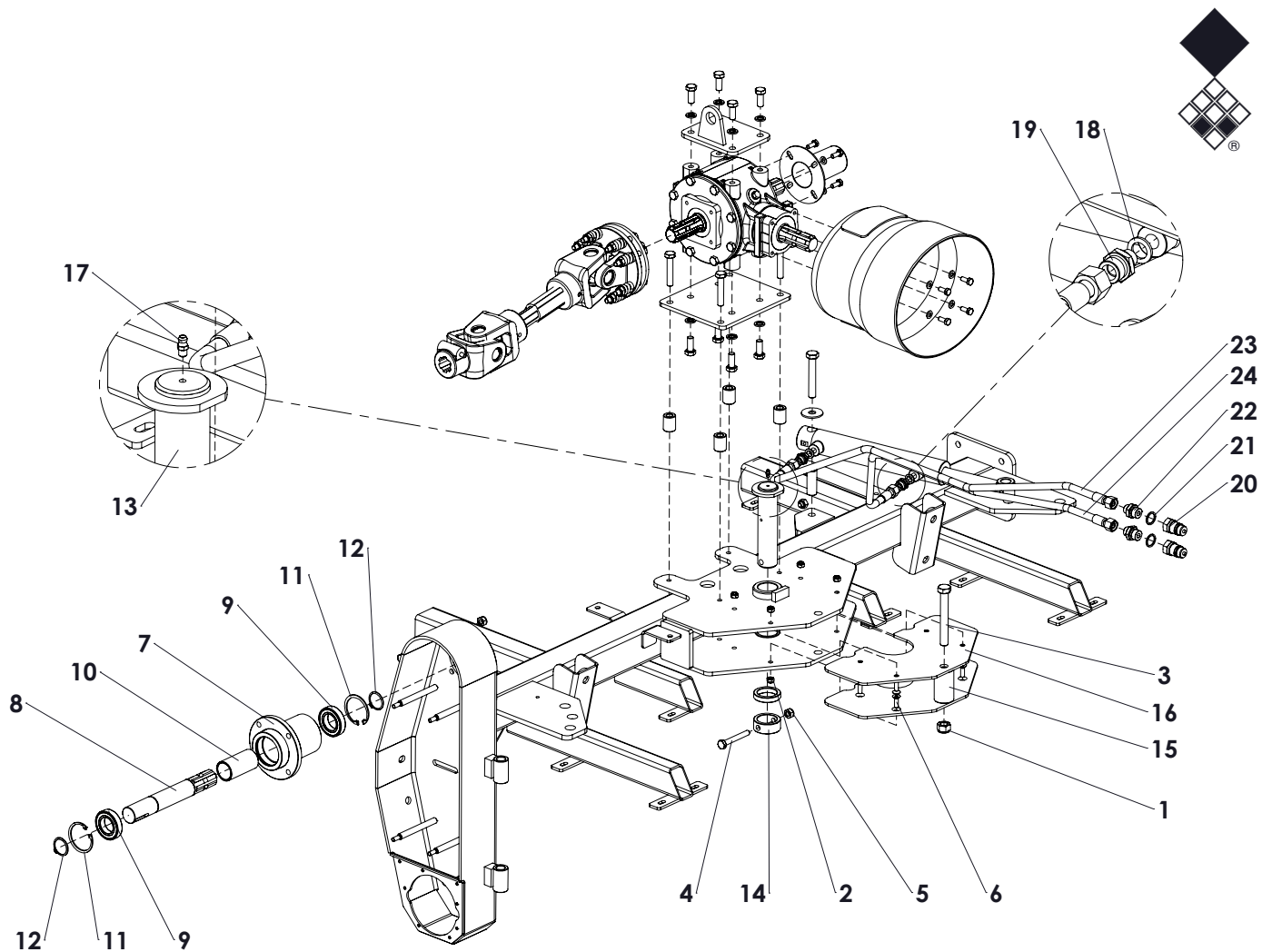
ITEM	PART NUMBER	DESCRIPTION	REMARKS	QUA
1	830.160.160	Self Lock Nut M16 10.9 - ISO 10511		4
2	830.100.100	Self Lock Nut M10 - ISO 10511		15
3	804.100.400	Bolt M10 x 40 - ISO 4017		15
4	470.069.152	Guide frame		1
5	468.069.154	Lock plate		1
6	446.129.150	Rubber plate		1
7	864.160.031	Large washer M16 - DIN 9021		4
8	804.160.350	Bolt M16 x 35 - ISO 4017		4



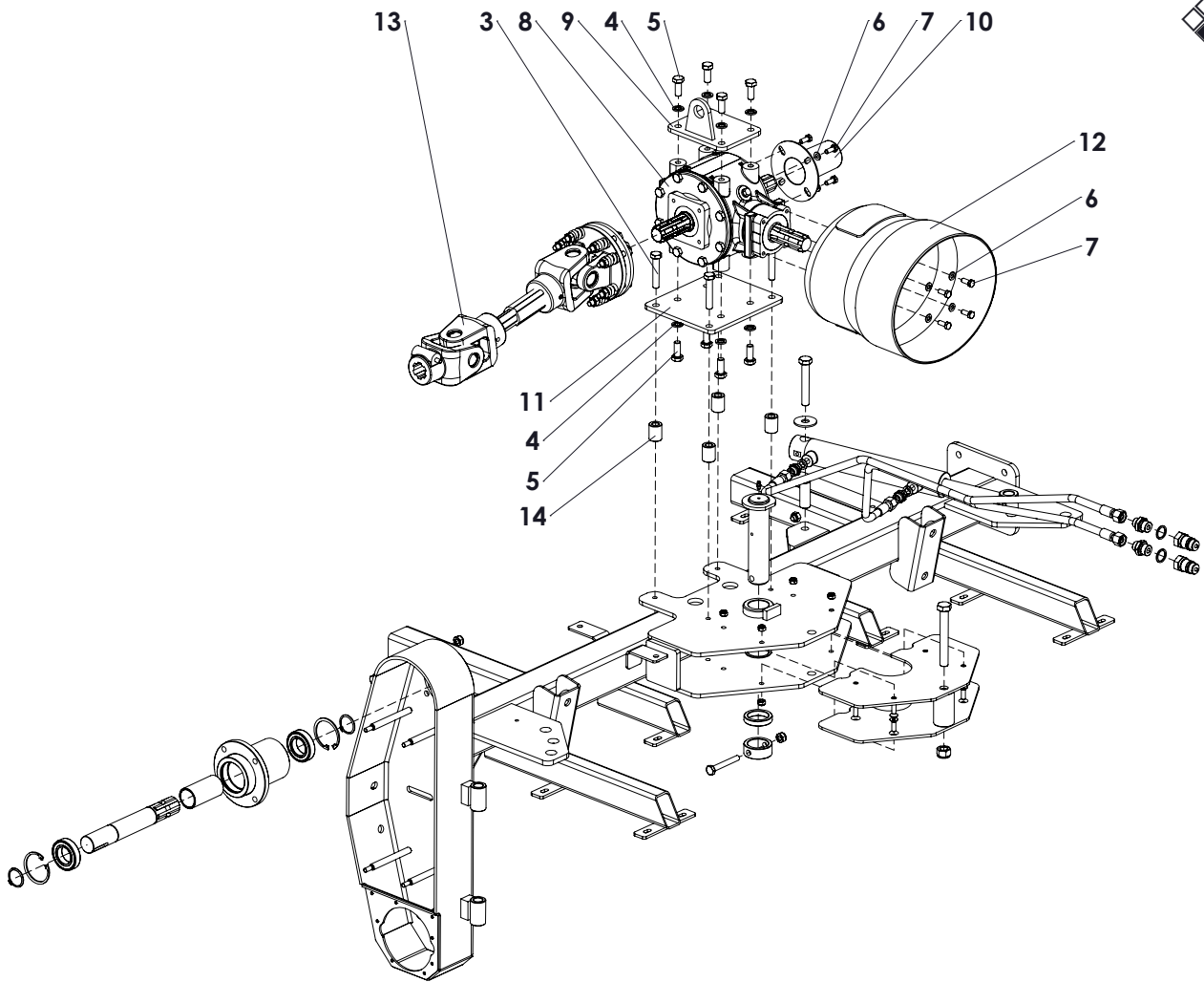
ITEM	PART NUMBER	DESCRIPTION	REMARKS	QUA
1	406.400.100	Distance bush Ø52/Ø40 L=10		1
2	638.040.250	Chain connector 1" Simplex		1
3	488.236.168	Rotor PBR150HH		1
4	468.021.440	Bearing cover		2
5	830.160.160	Self Lock Nut M16 10.9 - ISO 10511		2
6	802.160.600	Bolt M16 x 60 - ISO 4014 - 10.9		2
7	830.120.120	Self Lock Nut M12 - ISO 10511 Class 10.9		1
8	631.040.042	Chain wheel 1" - Z=13		1
9	818.100.160	Set screw M10 x 16 - DIN 916		2
10	866.120.020	Spring Washer M12 - DIN 127		1
11	804.120.300	Bolt M12 x 30 - ISO 4017		1
12	820.121.000	MH Bolt M12 x 100 ISO 8677		1
13	864.120.030	Washer M12 - ISO 7089		1
14	826.120.120	Nut M12 - DIN 934		2
15	2471872	Front roller bearing		1
16	884.120.360	Key 12x8x36 - DIN 6885		1
17	844.140.060	Nut M14x1.5		1
18	596.060.060	Connector		2
19	596.120.240	Grease nipple connector		2
20	864.120.031	Large washer M12 - DIN 9021		2
21	864.200.030	Washer M20 - ISO 7089		2
22	402.120.060	Washer		1
23	631.040.044	Chain wheel 1" - Z=13		1
24	884.100.400	Key 10x8x40 - DIN 6885		1
25	818.080.160	Set screw M8 x 16 - DIN 913		2
26	470.032.320	Tensioner		1
27	639.041.080	Sprocket KSR20 Z=12		1
28	631.041.370	Chain 1" L=1370		1
29	596.140.270	Bulkhead coupling		1
30	880.080.100	Grease nipple M8 DIN 71412A		1
31	596.062.000	Grease Hose L=200		1



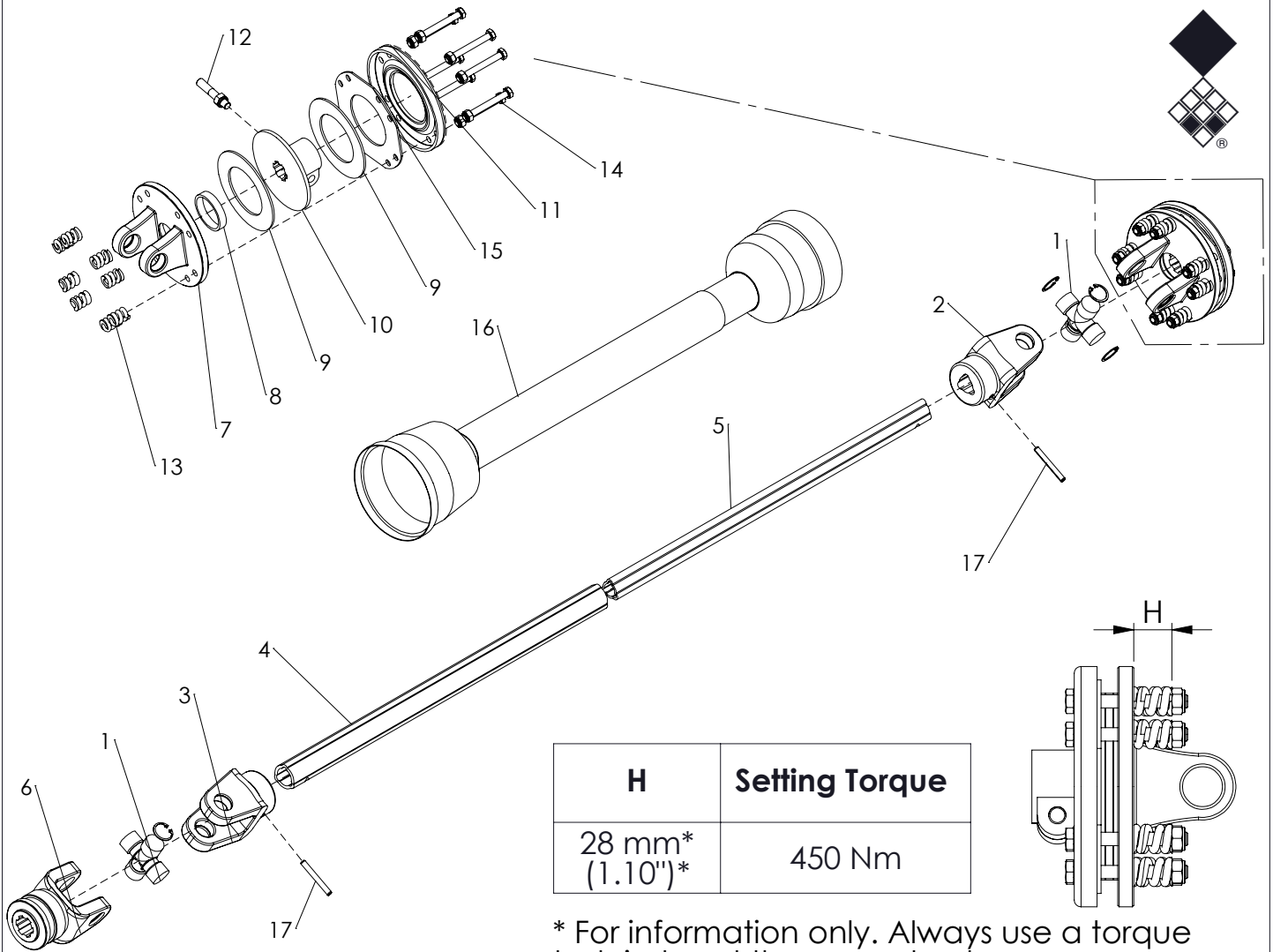
ITEM	PART NUMBER	DESCRIPTION	REMARKS	QUA
1	830.120.120	Self Lock Nut M12 - ISO 10511 Class 10		4
2	804.120.350	Bolt M12 x 35 - ISO 4017		4
3	802.160.650	Bolt M16 x 65 - ISO 4014 - 10.9		2
4	830.160.160	Self Lock Nut M16-ISO 10511 Class 10		2
5	470.105.460	Non drive support		1
6	2471872	Front roller bearing		1
7	468.021.440	Bearing cover		1
8	880.080.104	Grease nipple M8 45deg. DIN 71412B		1
9	468.031.660	shaft cover		1
10	470.084.940	Right guide		1
11	468.063.300	Blade		1
12	830.120.120	Self Lock Nut M12 - ISO 10511 Class 10		2
13	804.120.300	Bolt M12 x 30 - ISO 4017		2
14	470.084.942	Left guide		1
15	468.063.300	Blade		1
16	830.120.120	Self Lock Nut M12 - ISO 10511 Class 10		2
17	804.120.300	Bolt M12 x 30 - ISO 4017		2
18	521.190.920	Top Link Pin Ø19 L=92		2
19	523.120.650	Linch Pin D12		2



ITEM	PART NUMBER	DESCRIPTION	REMARKS	QUA
1	830.160.160	Self Lock Nut M16 10.9 - ISO 10511		1
2	830.080.080	Self Lock Nut M8 - ISO 10511		1
3	802.161.200	Bolt M16 x 120 - ISO 4014		1
4	802.100.750	Bolt M10 x 75 - ISO 4014		1
5	830.100.100	Self Lock Nut M10 - ISO 10511		1
6	816.080.250	Bolt M8x25 DIN 7991		8
7	474.800.740	Bearing house		1
8	420.352.000	Splined shaft 1-3/8" L=251		1
9	713.350.140	Bearing 6007 2RS		2
10	406.340.350	Distance bush		1
11	872.065.250	Circlip DIN 472 - 65x2.5		2
12	870.035.160	Circlip d=35 - DIN 471		2
13	474.401.600	Pivot pin		1
14	412.400.220	Lock ring		1
15	402.160.701	Bush		1
16	444.053.501	Slide plate		2
17	880.060.100	Grease nipple M6 DIN 71412A		1
18	874.130.020	Copper washer 1/4"		2
19	544.130.120	Nipple BSP 1_4" x pipe 12 (M18)		2
20	545.210.800	Quick connector male 1/2"		2
21	874.210.020	Copper washer 1_2		2
22	544.130.402	Nipple BSP 1_2" x pipe 12 (M18)		2
23	541.082.000	Hydraulic hose		2



ITEM	PART NUMBER	DESCRIPTION	REMARKS	QUA
1	880.080.100	Grease nipple M8 DIN 71412AGrease		1
2	880.080.100	nipple M8 DIN 71412A		1
3	802.120.650	Bolt M12 x 65 - ISO 4014		4
4	866.120.020	Spring Washer M12 - DIN 127		8
5	804.120.300	Bolt M12 x 30 - ISO 4017		8
6	864.080.030	Washer M8 - ISO 7089		8
7	804.080.200	Bolt M8 x 20 - ISO 4017		8
8	622.155.241	Comer gearbox T-304A 1.93:1		1
9	470.081.204	Lift plate		1
10	629.123.108	Cover PTO Shaft		1
11	468.082.101	Plate		1
12	629.275.242	PTO Cover 4xØ10 PD95PTO complete		1
13	400510	T40 with disc clutch (page P2)		1
14	402.130.325	Spacer		4

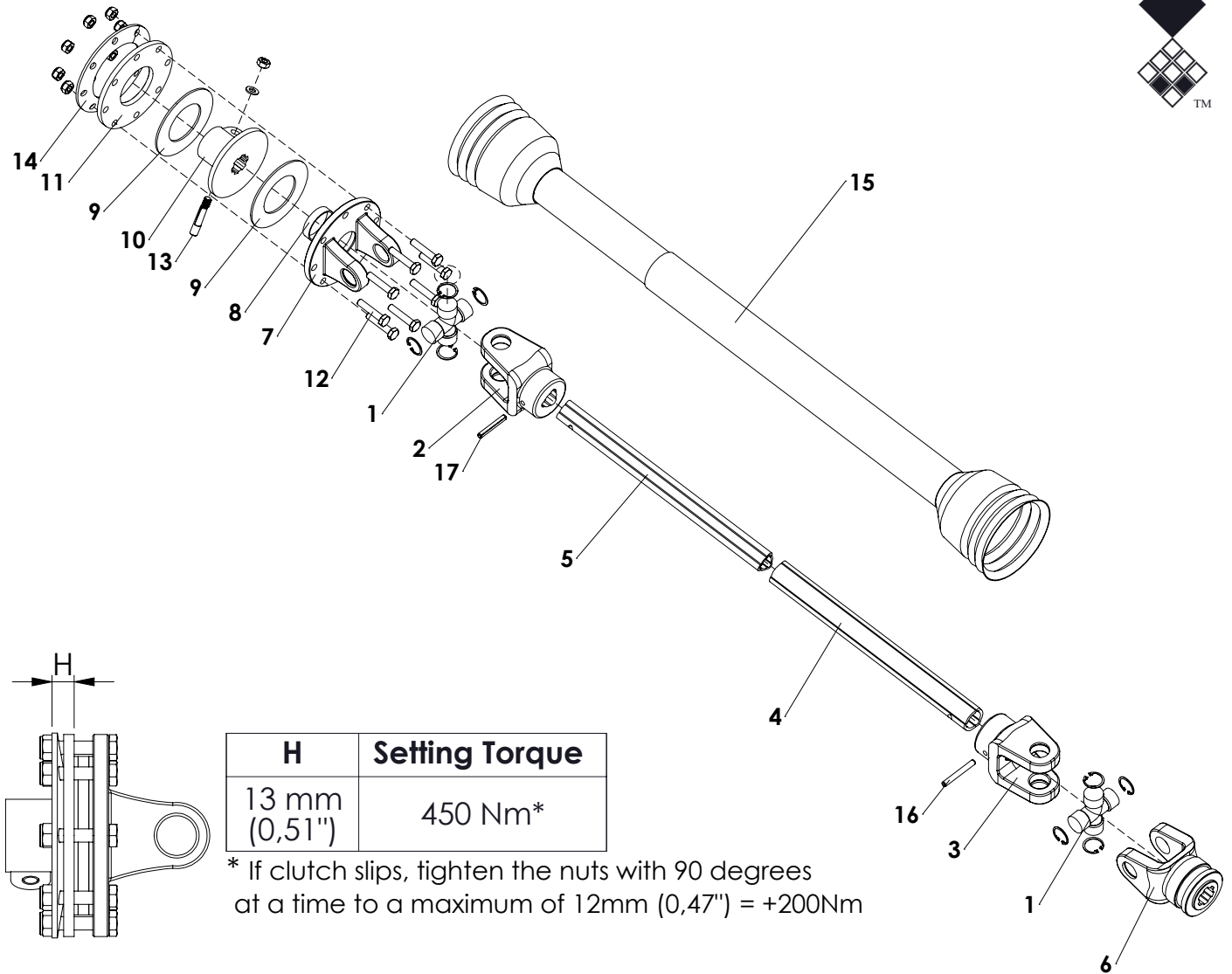


H	Setting Torque
28 mm* (1.10")*	450 Nm

* For information only. Always use a torque test rig to set the correct value.

ALWAYS deburr parts when cut
MEASURE correct length of PTO first
MAINTAIN slipclutch every month
NEVER USE PTO over 30 degrees
SLIPCLUTCH always on machine side

ITEM	PART NUMBER	DESCRIPTION	REMARKS	QUA
1	BEN PT152209	Universal joint assembled		2
2	BEN PT148813	Inner tube yoke		1
3	BEN PT143860	Outer tube yoke		1
4	BEN PT150516	Tubing cut to size	Cut to correct lenght	1
5	BEN PT150544	Tubing cut to size	Cut to correct lenght	1
6	BEN PT140106	End yoke with quick lock		1
7	BEN F1L04	Flange yoke		1
8	BEN F060	Bush		1
9	BEN F030/S	Lining ring		2
10	BEN F138	Hub		1
11	BEN F1180	Pressure plate		1
12	BEN 90938	Conic bolt and nut		1
13	BEN F0110	Spring		8
14	BEN F10085	Bolt and nut		8
15	BEN F070	Inner plate		1
16	BEN PT170005	Safety guard group	Cut to correct lenght	1
17	190000014	Roll Pin 8 x 65		2
	611.405.100	PTO shaft type T-40 tl 510		

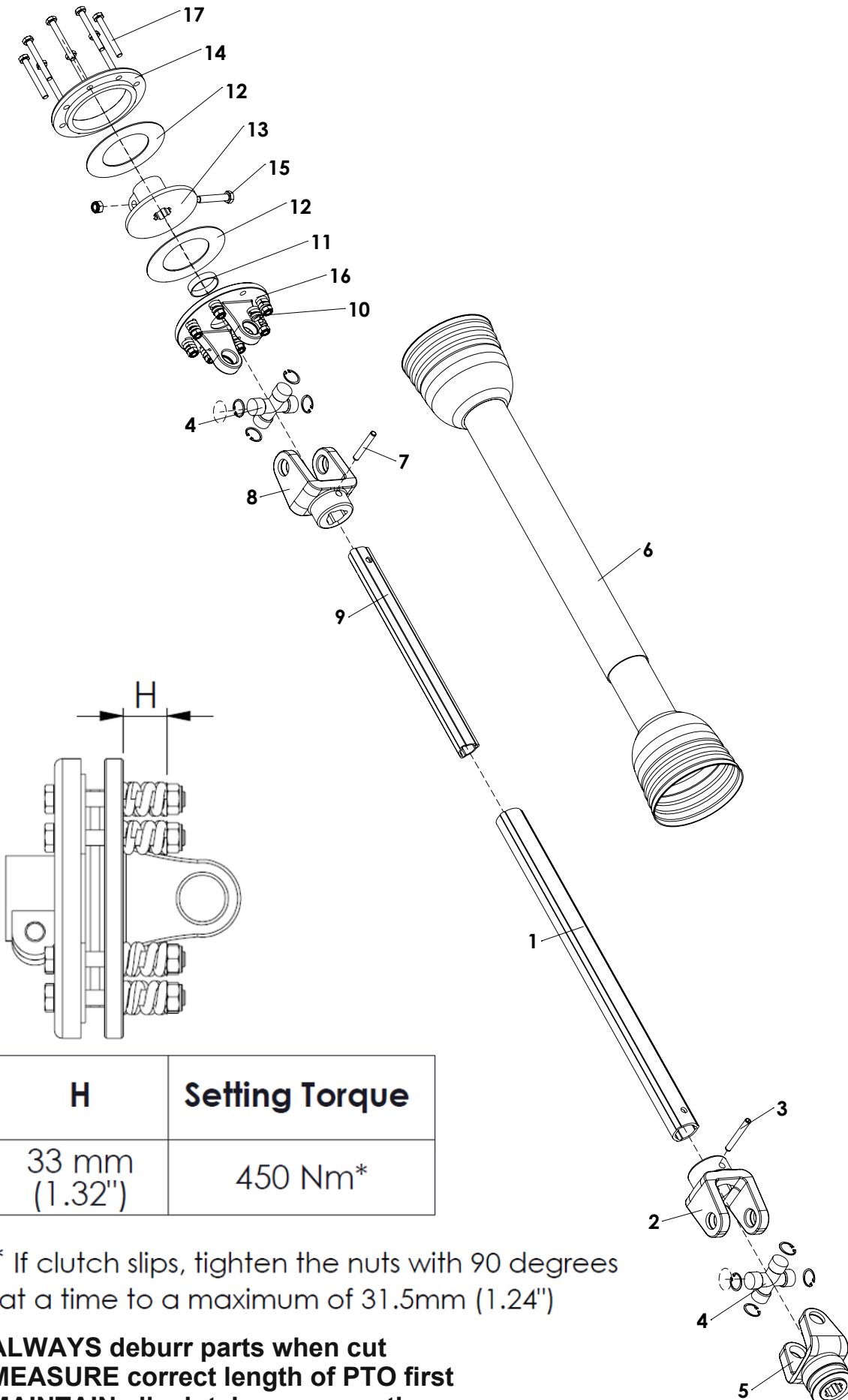


H	Setting Torque
13 mm (0,51")	450 Nm*

* If clutch slips, tighten the nuts with 90 degrees at a time to a maximum of 12mm (0,47") = +200Nm

ALWAYS deburr parts when cut
MEASURE correct length of PTO first
MAINTAIN slipclutch every month
NEVER USE PTO over 30 degrees
SLIPCLUTCH always on machine side

ITEM	PART NUMBER	DESCRIPTION	REMARKS	QUA
1	180014130	Cross and 4x circlip kit		2
2	1510140071	Inner tube yoke type 40		1
3	1410140061	Outer tube yoke type 40		1
4	1521406620700	T40-series Outer tube	Cut to correct length	1
5	153140519	T40-series Inner tube	Cut to correct length	1
6	1410244301	Complete collar yoke type 40		1
7	1510143791	Flanged yoke T40		1
8	180015020	Bush		1
9	180014019	Lining ring		2
10	1510148401	Hub T40		1
11	1800175681	Pressure plate		1
12	165000858	Bolt & nut M10 x 1,5 x 50		8
13	165000588	Tapered Pin 1 3/8" kit	Retighten every 40 hours	1
14	180017425	Belleville spring		1
15	1423400167451	Complete guard 40-series	Cut to correct length	1
16	190000014	Roll Pin 8 x 65		1
17	190000012	Roll Pin 8 x 55		1
	400510	Complete PTO T40		



H	Setting Torque
33 mm (1.32")	450 Nm*

* If clutch slips, tighten the nuts with 90 degrees at a time to a maximum of 31.5mm (1.24")

ALWAYS deburr parts when cut
MEASURE correct length of PTO first
MAINTAIN slipclutch every month
NEVER USE PTO over 30 degrees
SLIPCLUTCH always on machine side

ITEM	PART NUMBER	DESCRIPTION	REMARKS	QUA
1	152140207	Outer tube		1
2	151014006	Outer tube yoke		1
3	190000014	Outer roll pin		1
4	180014130	Cross and 4x circlip kit		2
5	141024430	Complete collar yoke		1
6	1422400307430	Complete guard	Cut to correct length	1
7	190000012	Inner roll pin		1
8	151004007	Inner tube yoke		1
9	153140107	Inner tube		1
10	180014022	Spring		8
11	180015020	Bush		1
12	180014019	Lining ring		2
13	151014018	Hub		1
14	180014020	Pressure plate		1
15	165000502	Bolt and Nut	Retighten every 40 hours	1
16	151014017	Flanged yoke		1
17	165000501	Bolt and nut		8
	400510	Complete PTO		
		ALWAYS deburr parts when cut		
		MEASURE correct length of PTO first		
		MAINTAIN slipclutch every month		
		NEVER USE PTO over 30 degrees angle		
		SLIPCLUTCH always on machine side		