

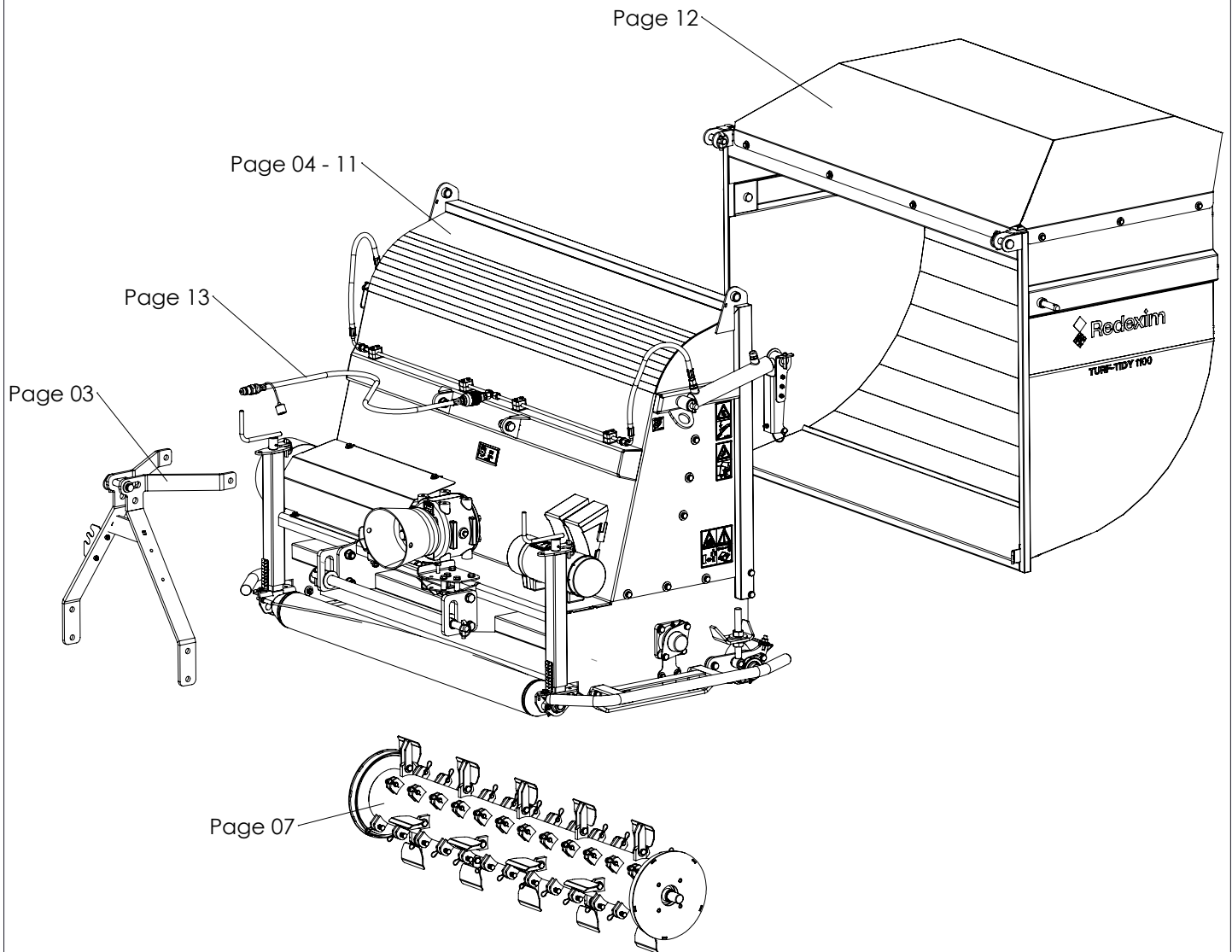
Turf-Tidy 1100



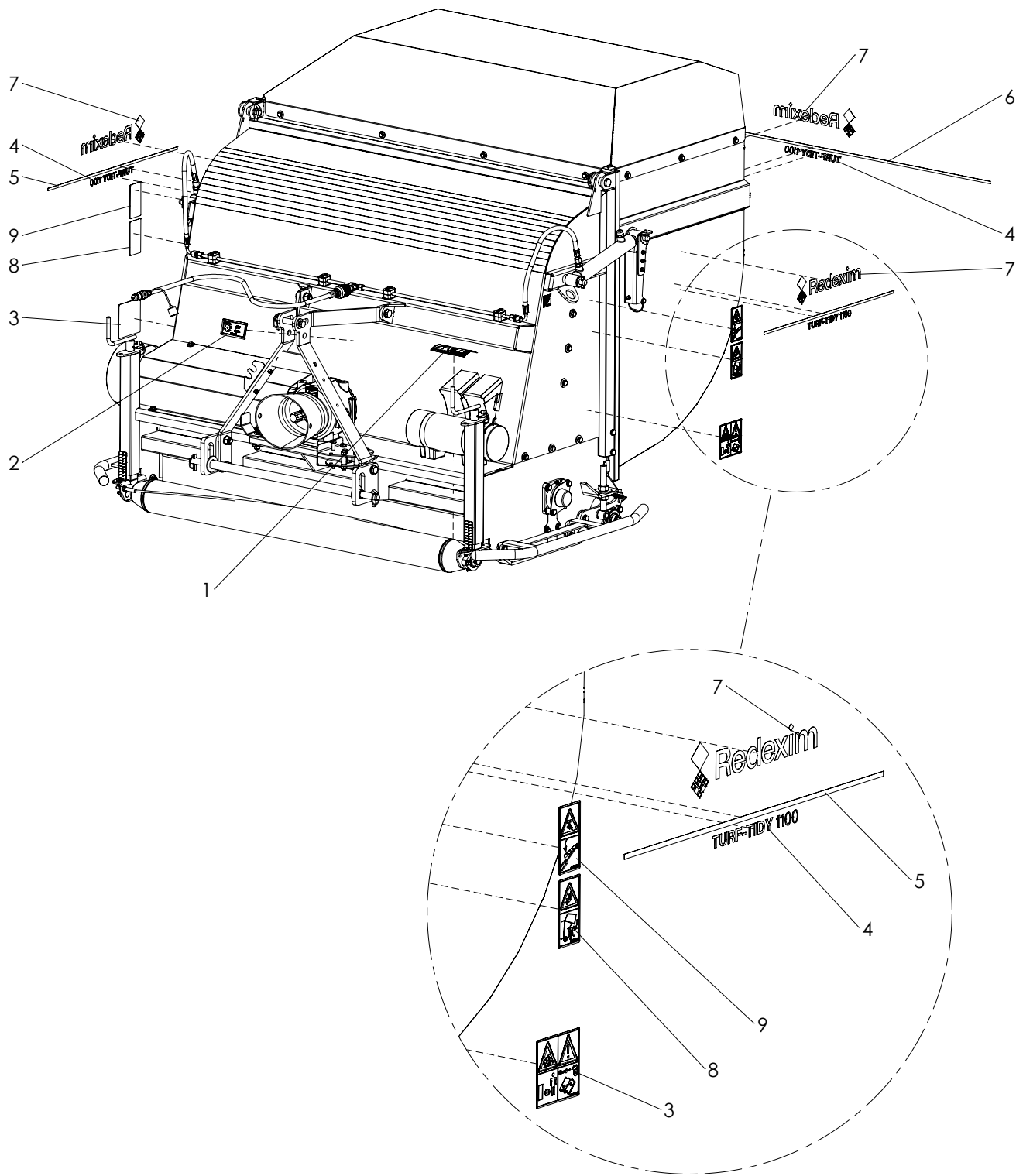
Version: PM0002089-2602
Applicable to: A0002089 Turf-Tidy 1100

PARTS MANUAL

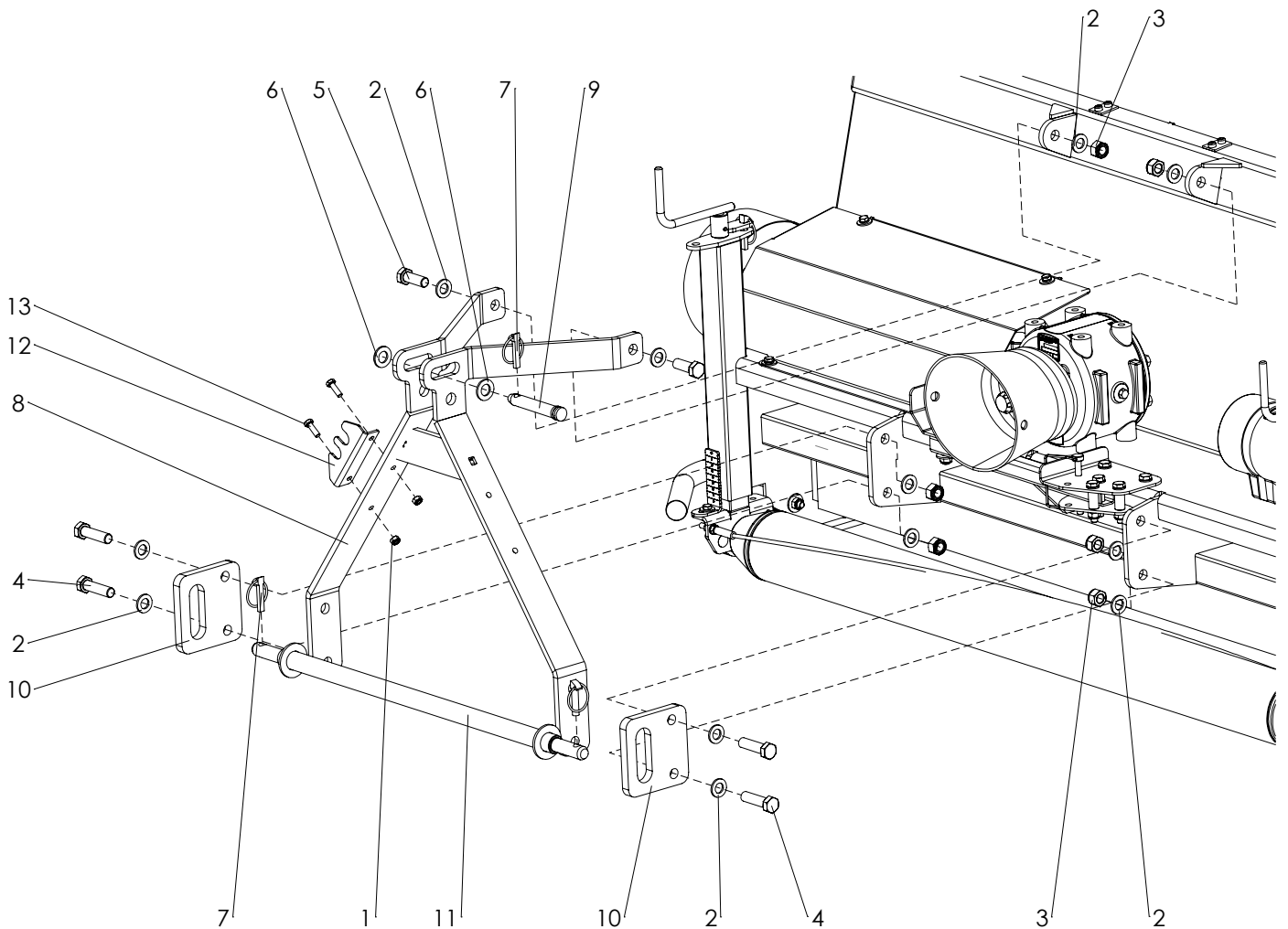




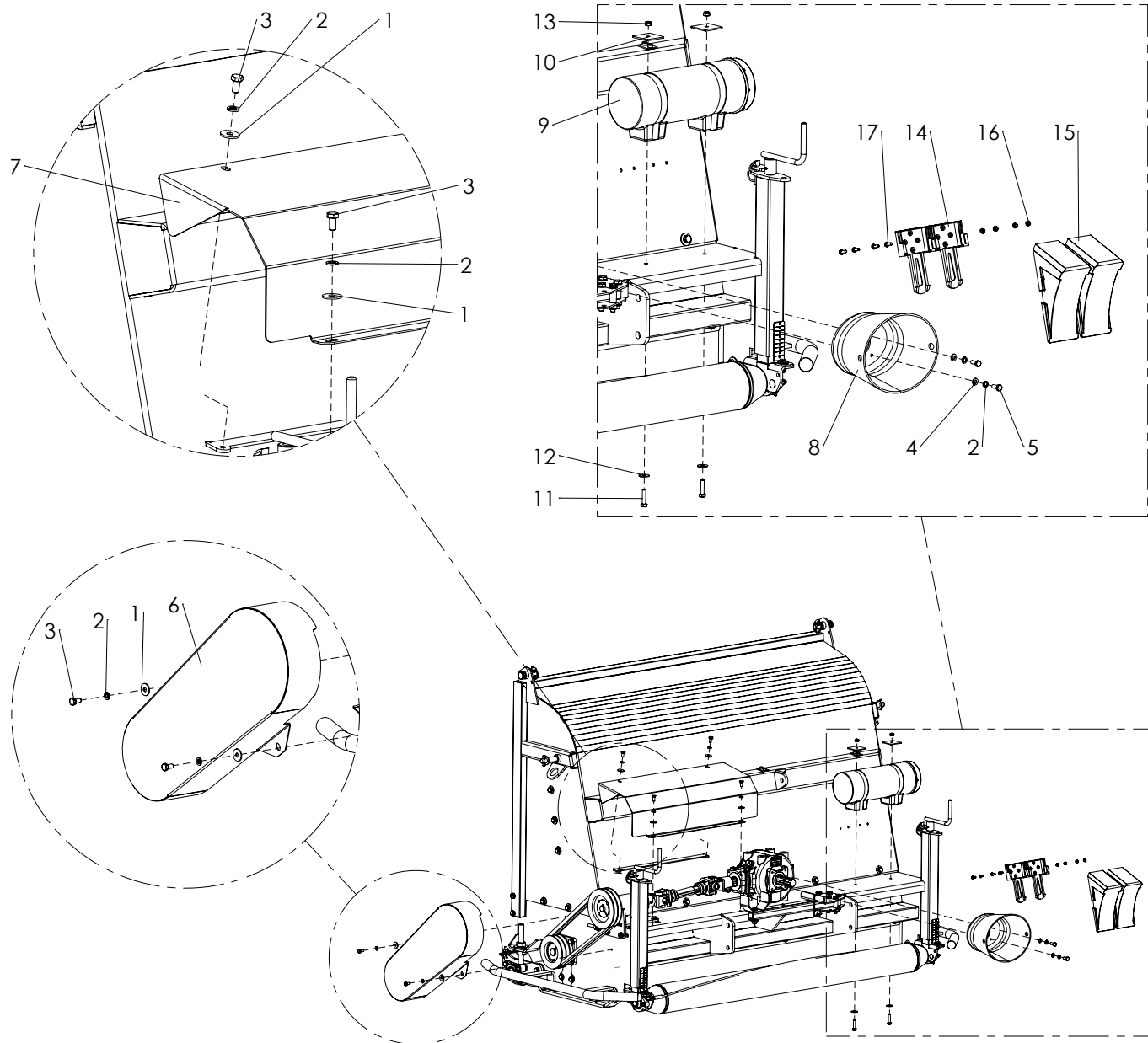
- Page 02 - Decals
- Page 03 - 3-Point
- Page 04 - Covers
- Page 05 - Main drive
- Page 06 - Side drive
- Page 07 - Rotor & Blades
- Page 08 - Front roller
- Page 09 - Rear roller
- Page 10 - Guards
- Page 11 - Processing unit
- Page 12 - Hopper
- Page 13 - Hydraulics
- Page P1 - PTO



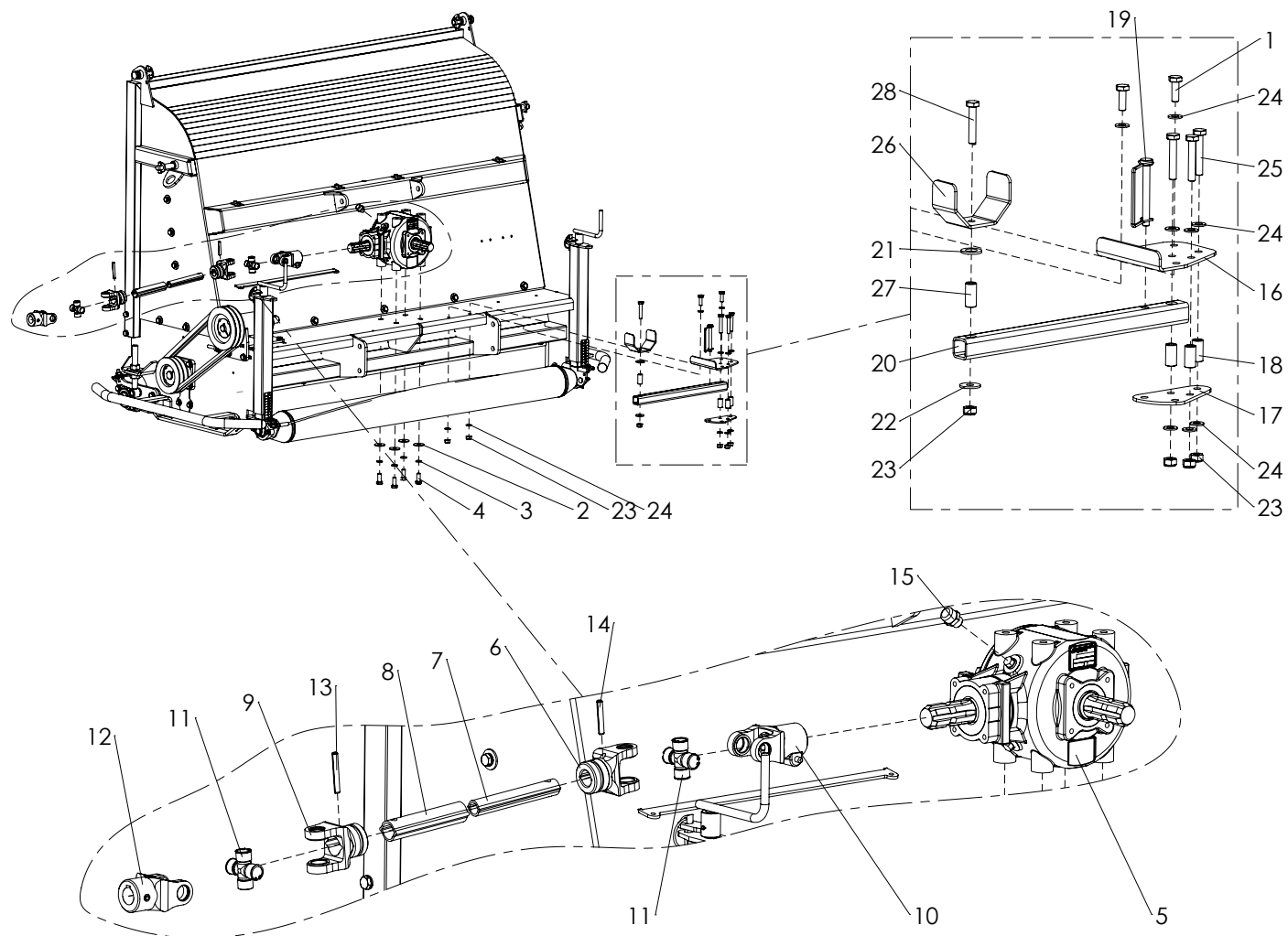
ITEM	PART NUMBER	DESCRIPTION	REMARKS	QUA
1	900.280.402	Safety decal read manual		1
2	900.260.424	Safety decal PTO 540 RPM		1
3	921.280.402	Safety decal cutting elements		2
4	A0002101	Decal Turf-Tidy 1100		3
5	A0002103	Decal trim line		2
6	A0002102	Decal trim line		1
7	A0001987	Decal Redexim 350 - White		3
8	A0002438	Safety decal hopper		2
9	A0002440	Safety decal hydraulic lock		2



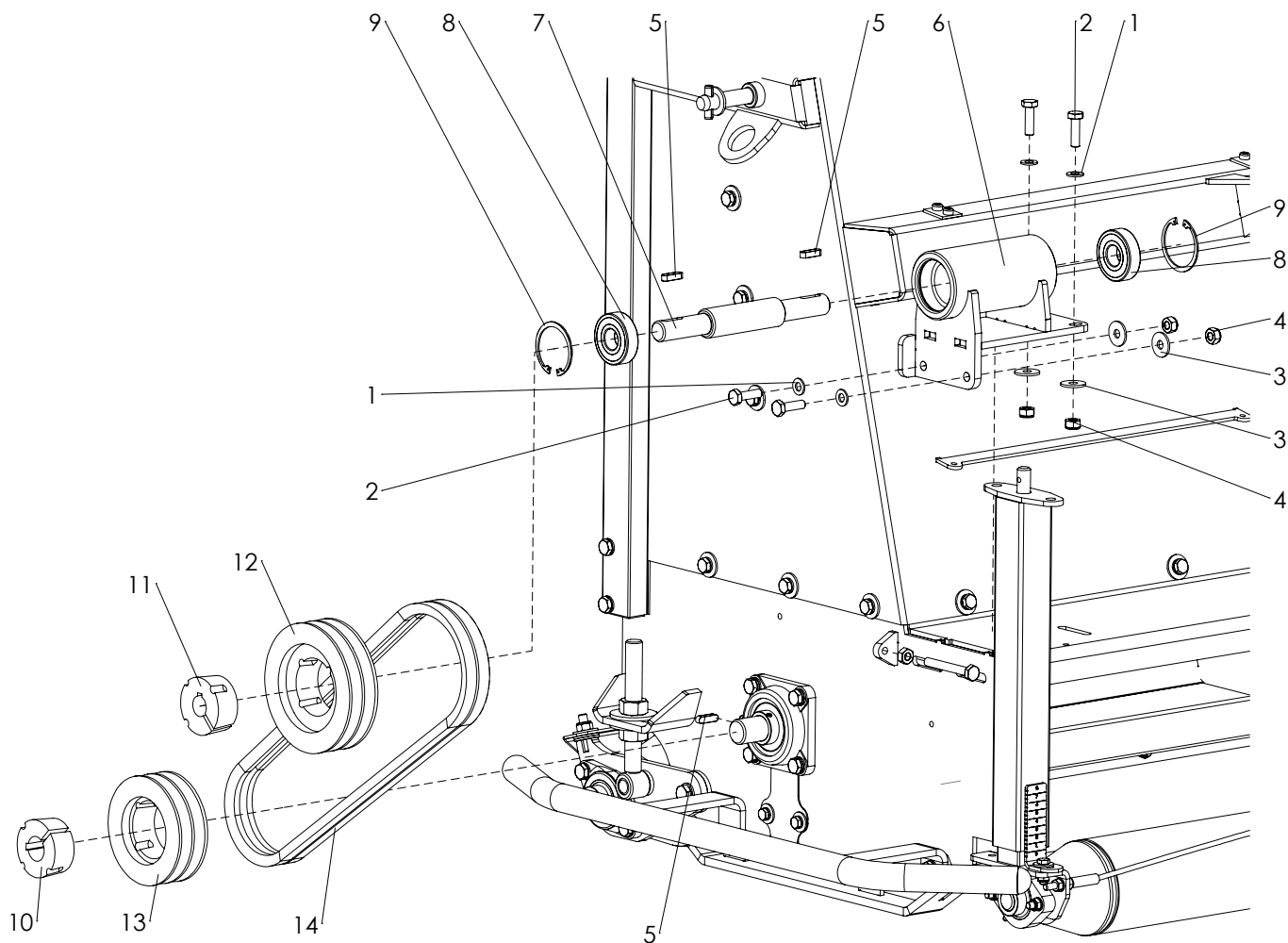
ITEM	PART NUMBER	DESCRIPTION	REMARKS	QUA
1	830.080.080	SL nut M8 - DIN 985 - Grade 8		2
2	864.160.030	Washer M16 - DIN 125A		12
3	830.160.160	SL nut M16 - DIN 985 - Grade 10		6
4	804.160.600	Hex bolt M16 x 60 - ISO 4017 - Grade 8.8		4
5	804.160.450	Hex bolt M16 x 45 - ISO 4017 - Grade 8.8		2
6	864.180.030	Washer M18 - DIN 125A		2
7	523.110.450	Linch pin		3
8	TR-031.0100.14	3-Point		1
9	521.190.920	Top Link Pin		1
10	TR-031.0100.35	3-point plate		2
11	TR-031.0110.52	Lifting rod		1
12	A0002407	Hydraulic hose bracket		1
13	804.080.250	Hex bolt M8 x 25 - ISO 4017 - Grade 8.8		2



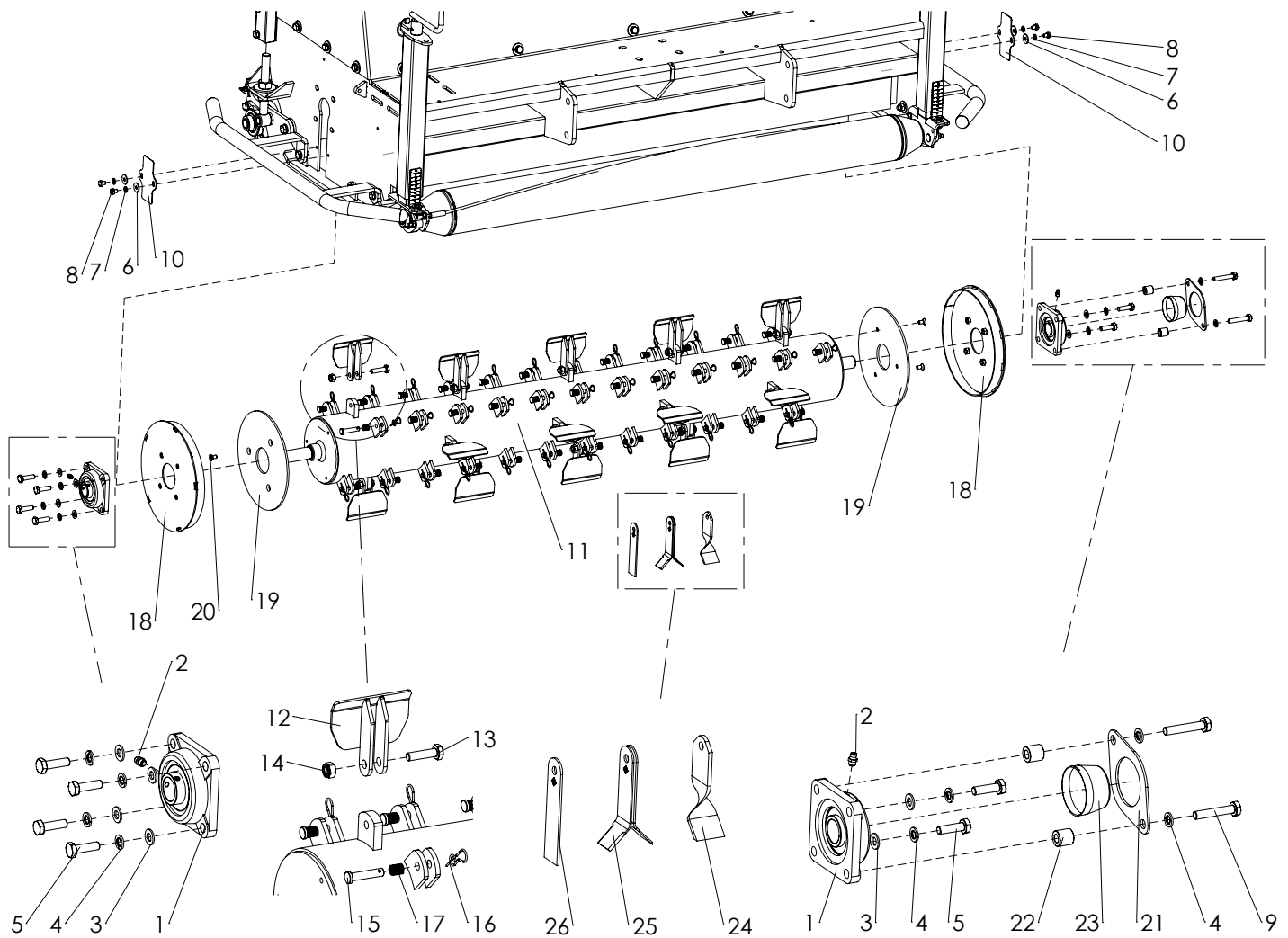
ITEM	PART NUMBER	DESCRIPTION	REMARKS	QUA
1	864.080.024	Washer M8 large - DIN 9021		6
2	866.080.020	Spring washer M8 - DIN 127		8
3	804.080.160	Hex bolt M8 x 16 - ISO 4017 - Grade 8.8		6
4	864.080.030	Washer M8 - DIN 125A		2
5	804.080.200	Hex bolt M8 x 20 - ISO 4017 - Grade 8.8		2
6	TR-031.0110.33	Cover SM		1
7	TR-031.0210.29	Cover		1
8	619.230.150	PTO cover		1
9	444.803.100	Toolbox		1
10	468.030.530	Toolbox contraplate		2
11	804.080.350	Hex bolt M8 x 35 - ISO 4017 - Grade 8.8		2
12	864.080.024	Washer M8 large - DIN 9021		2
13	830.080.080	SL nut M8 - DIN 985 - Grade 8		2
14	A0002427	Chock holder		2
15	A0002426	Chock		2
16	830.060.060	SL nut M6 - DIN 985 - Grade 8		4
17	804.060.150	Hex bolt M6 x 15 - ISO 4017 - Grade 8.8		4



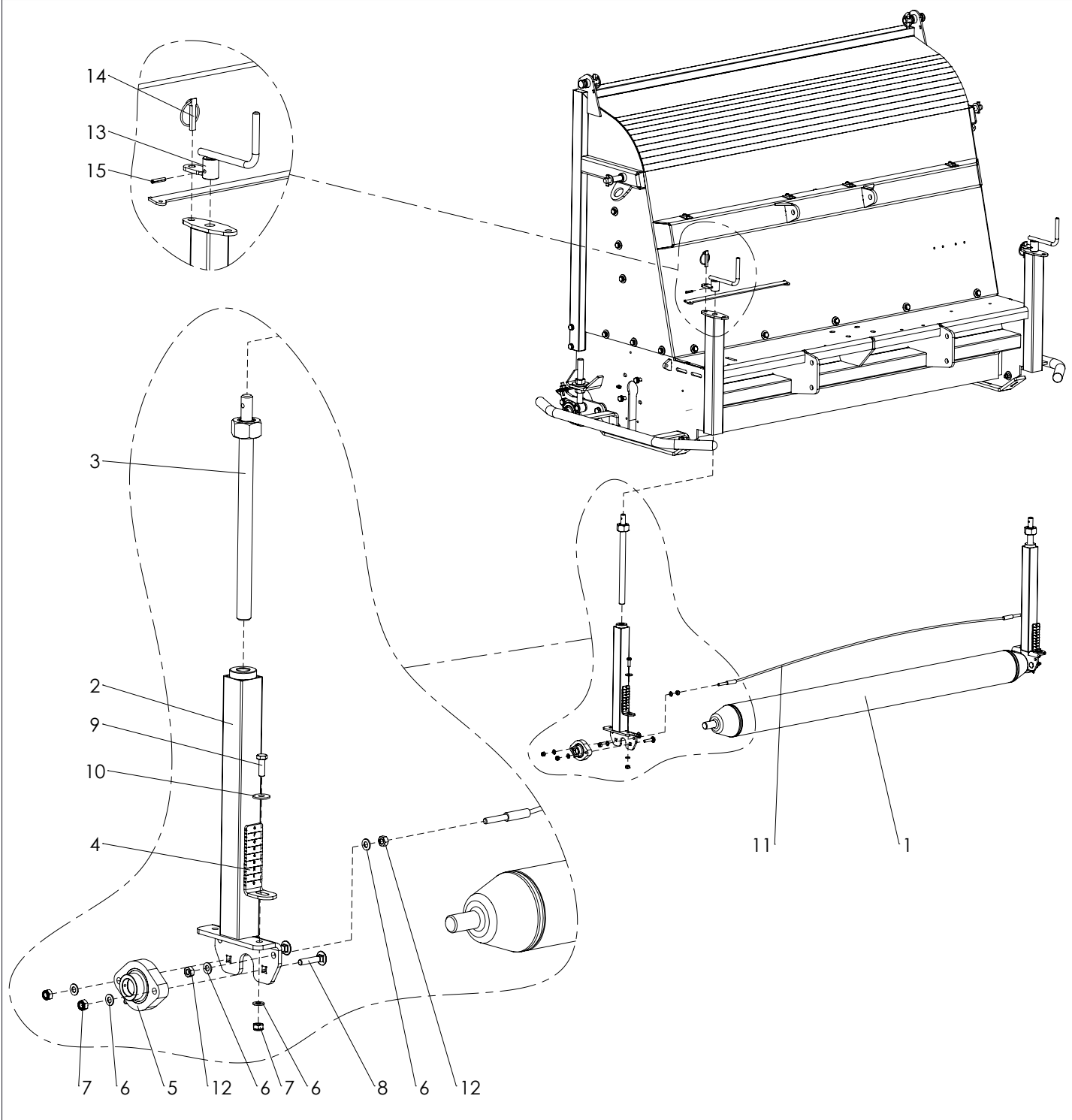
ITEM	PART NUMBER	DESCRIPTION	REMARKS	QUA
1	804.100.300	Hex bolt M10 x 30 - ISO 4017 - Grade 8.8		2
2	864.120.031	Washer M12 large - DIN 9021		4
3	866.120.020	Spring washer M12 - DIN 127		4
4	804.120.300	Hex bolt M12 x 30 - ISO 4017 - Grade 8.8		4
5	A0002290	Gearbox - T-304A - 1:3		1
6	A0002301	Yoke inner tube		1
7	A0002294	Inner tube		1
8	A0002295	Outer tube		1
9	A0002300	Yoke outer tube		1
10	A0002296	Push pin yoke		1
11	A0002297	Cross kit		2
12	A0002298	Yoke Ø25H8		1
13	878.080.600	Roll pin 8 x 60 - ISO 8752		1
14	878.080.500	Roll pin 8 x 50 - ISO 8752		1
15	537.380.360	Breather 3/8"		1
16	A0002377	Plate		1
17	A0002379	Plate		1
18	A0002380	Bush		3
19	523.100.850	Square tube circlip		1
20	A0002371	Rectangular tube		1
21	864.160.030	Washer M16 - DIN 125A		1
22	864.100.031	Washer M10 large - DIN 9021		1
23	830.100.100	SL nut M10 - DIN 985 - Grade 10		6
24	864.100.030	Washer M10 - DIN 125A		10
25	802.100.600	Hex bolt M10 x 60 - ISO 4014 - Grade 8.8		3
26	A0002373	PTO Bracket		1
27	A0002372	Bush		1
28	802.100.550	Hex bolt M10 x 55 - ISO 4014 - Grade 8.8		1



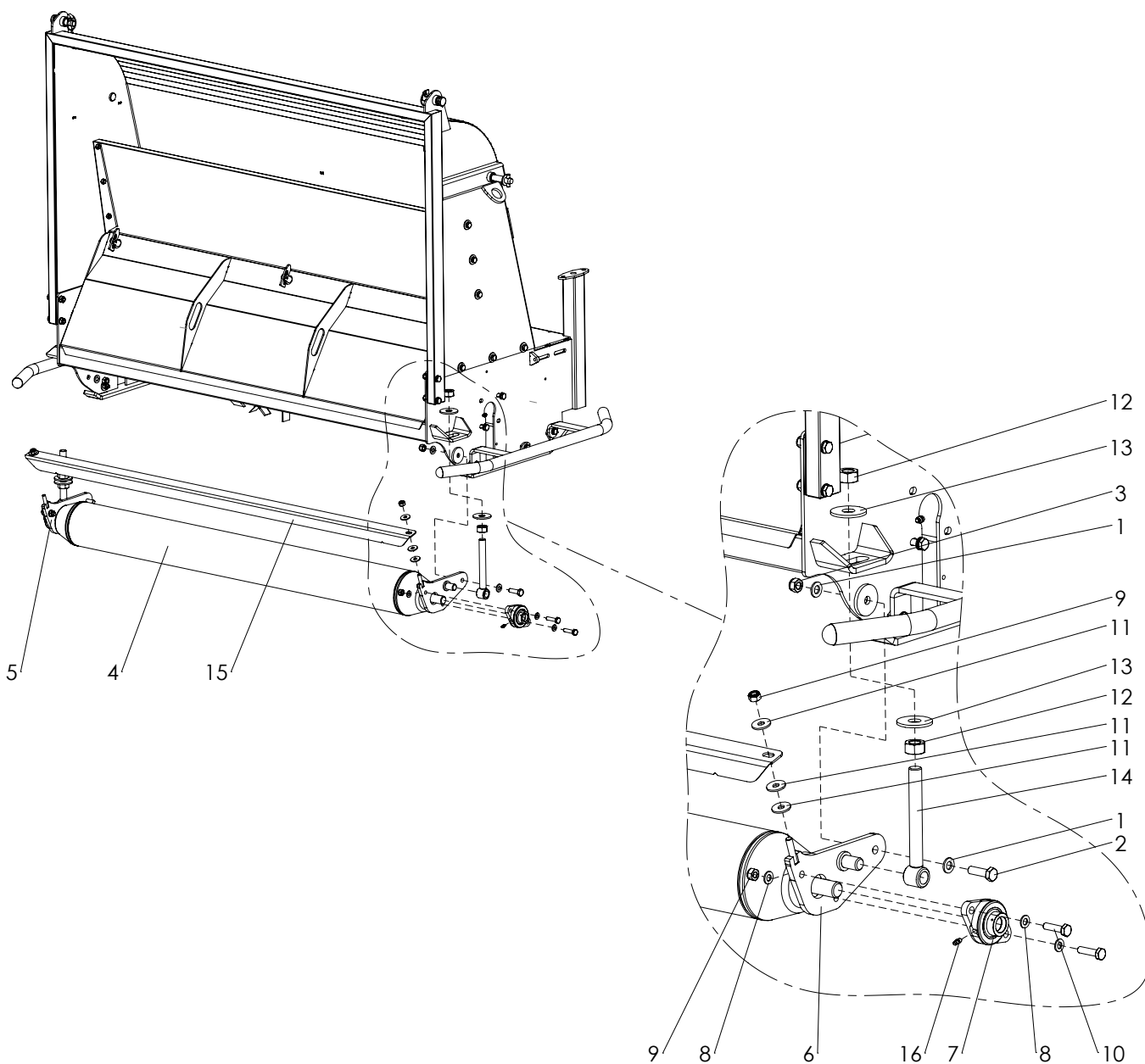
ITEM	PART NUMBER	DESCRIPTION	REMARKS	QUA
1	864.100.030	Washer M10 - DIN 125A		4
2	804.100.350	Hex bolt M10 x 35 - ISO 4017 - Grade 8.8		4
3	864.100.031	Washer M10 large - DIN 9021		4
4	830.100.100	SL nut M10 - DIN 985 - Grade 10		4
5	884.080.300	Key 8x7x30 - DIN 6885		3
6	TR-031.0210.28	Bearing house		1
7	TR-031.0200.26	Shaft		1
8	713.250.170	Bearing 6305-H-2RSR		2
9	872.062.200	Circlip D=62 - DIN 472		2
10	648.302.012	Taperlock 2012 - 30mm		1
11	648.252.012	Taperlock 2012 - 25mm		1
12	646.021.502	Pulley SPB 150-2 T2012		1
13	646.021.252	Pulley SPB 125-2 T2012		1
14	A0002291	V-belt XPB 1180		2



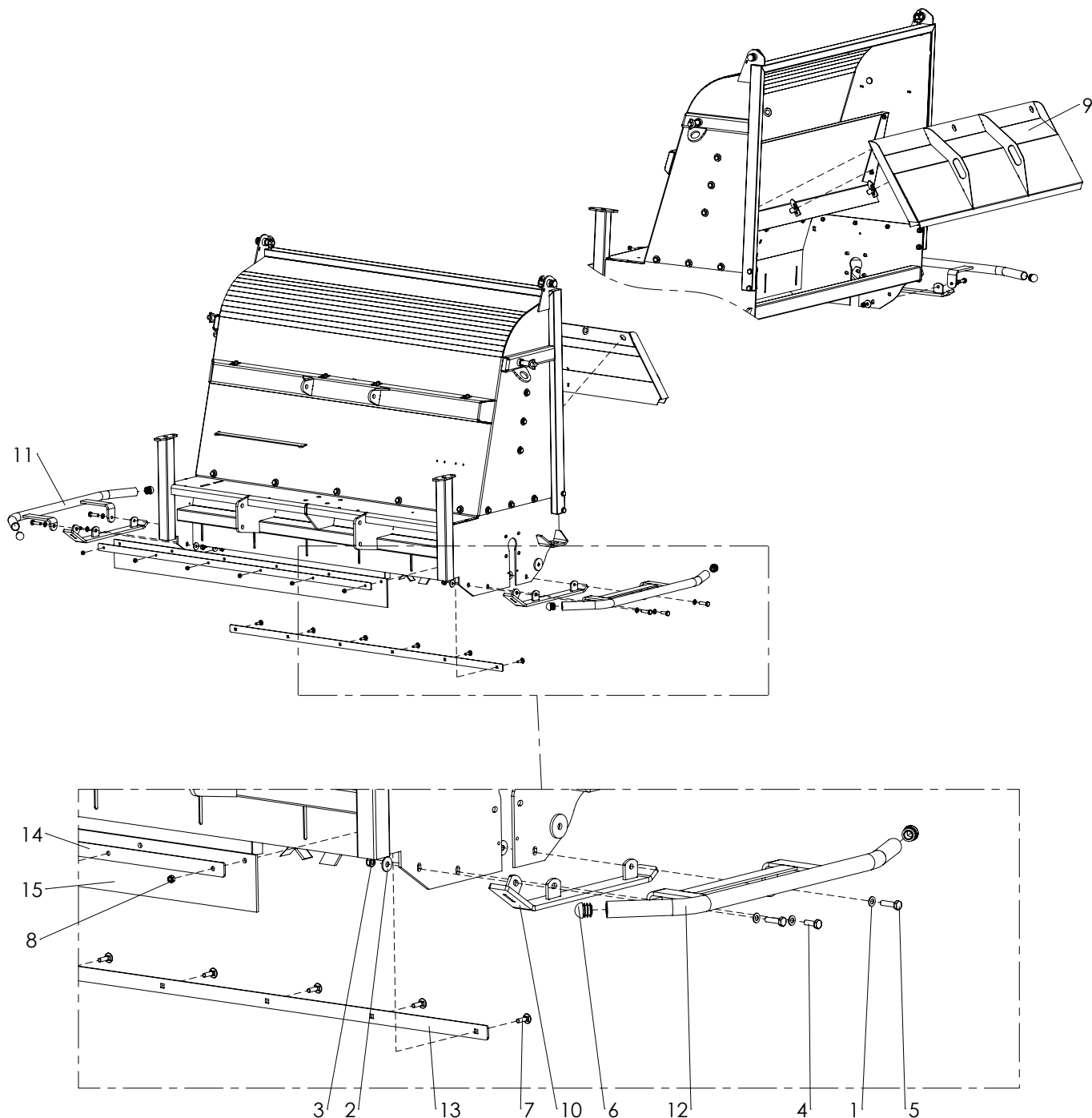
ITEM	PART NUMBER	DESCRIPTION	REMARKS	QUA
1	741.300.380	Bearing UCF 206		2
2	880.040.100	Grease nipple 1/4" - DIN 71412 - 180°		2
3	864.100.030	Washer M10 - DIN 125A		8
4	866.100.020	Spring washer M10 - DIN 127		8
5	804.100.350	Hex bolt M10 x 35 - ISO 4017 - Grade 8.8		6
6	864.080.024	Washer M8 large - DIN 9021		10
7	866.080.020	Spring washer M8 - DIN 127		4
8	804.080.100	Hex bolt M8 x 10 - ISO 4017 - Grade 8.8		4
9	802.100.550	Hex bolt M10 x 55 - ISO 4014 - Grade 8.8		2
10	TR-031.0210.46	Cover		2
11	TR-031.0300.14	Rotor		1
12	TR-031.0305.02	Wind paddle		18
13	802.100.400	Hex bolt M10 x 40 - ISO 4014 - Grade 10.9		18
14	830.100.100	SL nut M10 - DIN 985 - Grade 10		18
15	TR-LE.FP10-46	Pin		48
16	TR-LE.FP10-46-C	Clip		48
17	TR-LE.FP10-46-S	Spring		48
18	TR-031.0300.05	Anti-wrapping plate out		2
19	TR-031.0300.19	Anti-wrapping plate in		2
20	816.080.160	CSK screw M8 x 16 - DIN 7991 - Grade 8.8		6
21	A0002420	Cover bracket		1
22	A0002416	Bush		2
23	A0002421	End cap		1
24	TR-LE.FTW120	Flail Blade		48
25	TR-LE.FBB100	Back to back flail blade		96
26	TR-LE.FSC120	Scarify blade 3mm		48



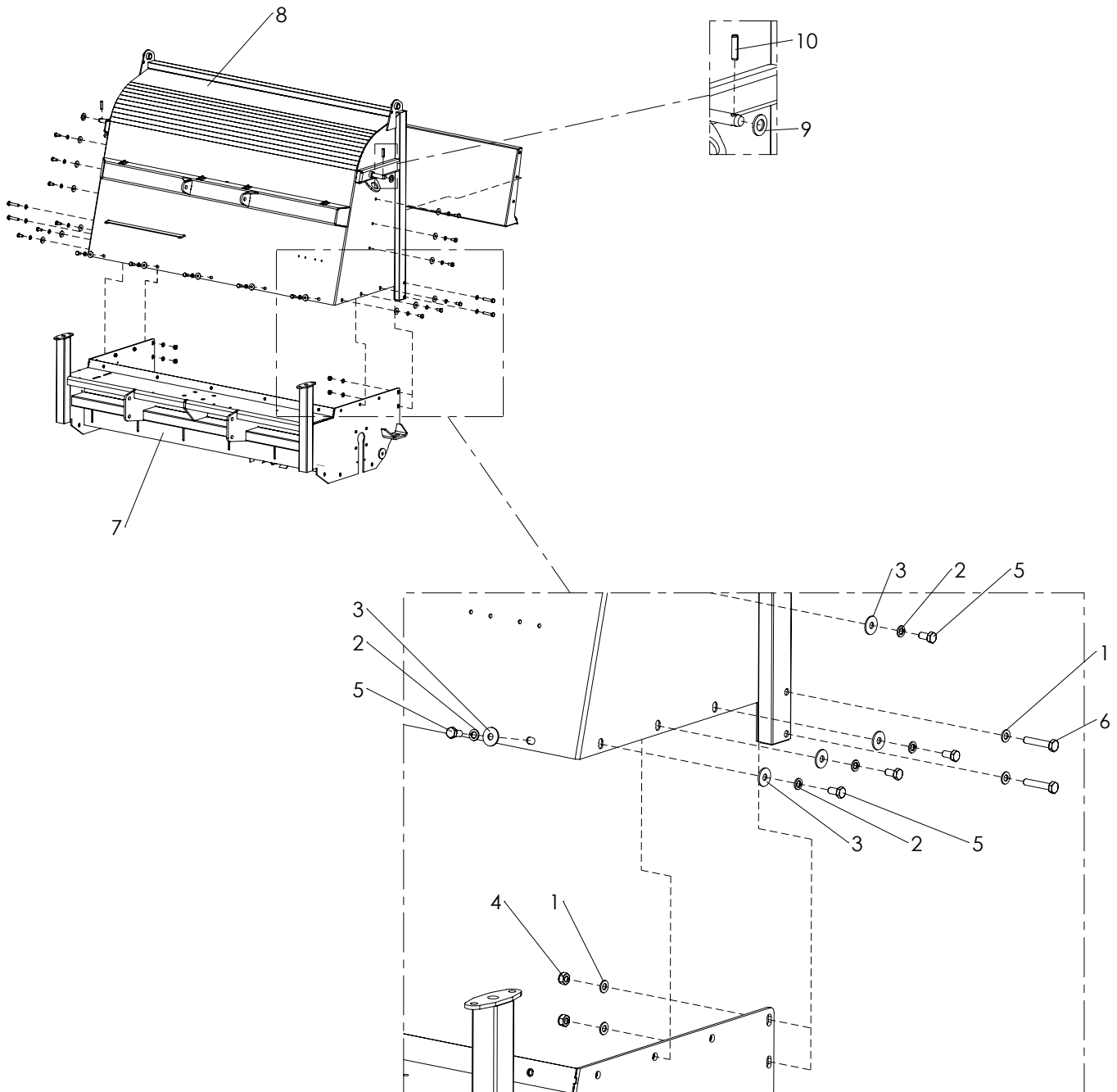
ITEM	PART NUMBER	DESCRIPTION	REMARKS	QUA
1	TR-34.01032	Roller		1
2	TR-031.0210.04	Spindle tube		2
3	TR-031.0200.15	Spindle		2
4	TR-34.01018	Ruler		2
5	110250	Bearing		2
6	864.080.030	Washer M8 - DIN 125A		10
7	830.080.080	SL nut M8 - DIN 985 - Grade 8		6
8	820.080.400	MH bolt M8 x 40 - ISO 8677 - Grade 8.8		4
9	804.080.250	Hex bolt M8 x 25 - ISO 4017 - Grade 8.8		2
10	864.080.024	Washer M8 large - DIN 9021		2
11	TR-34.01031	Scraper cable		1
12	826.080.080	Nut M8 - DIN 934 - Grade 8		4
13	TR-34.03004	Handle		2
14	523.110.450	Linch pin		2
15	878.060.300	Roll pin 6 x 30 - ISO 8752		2



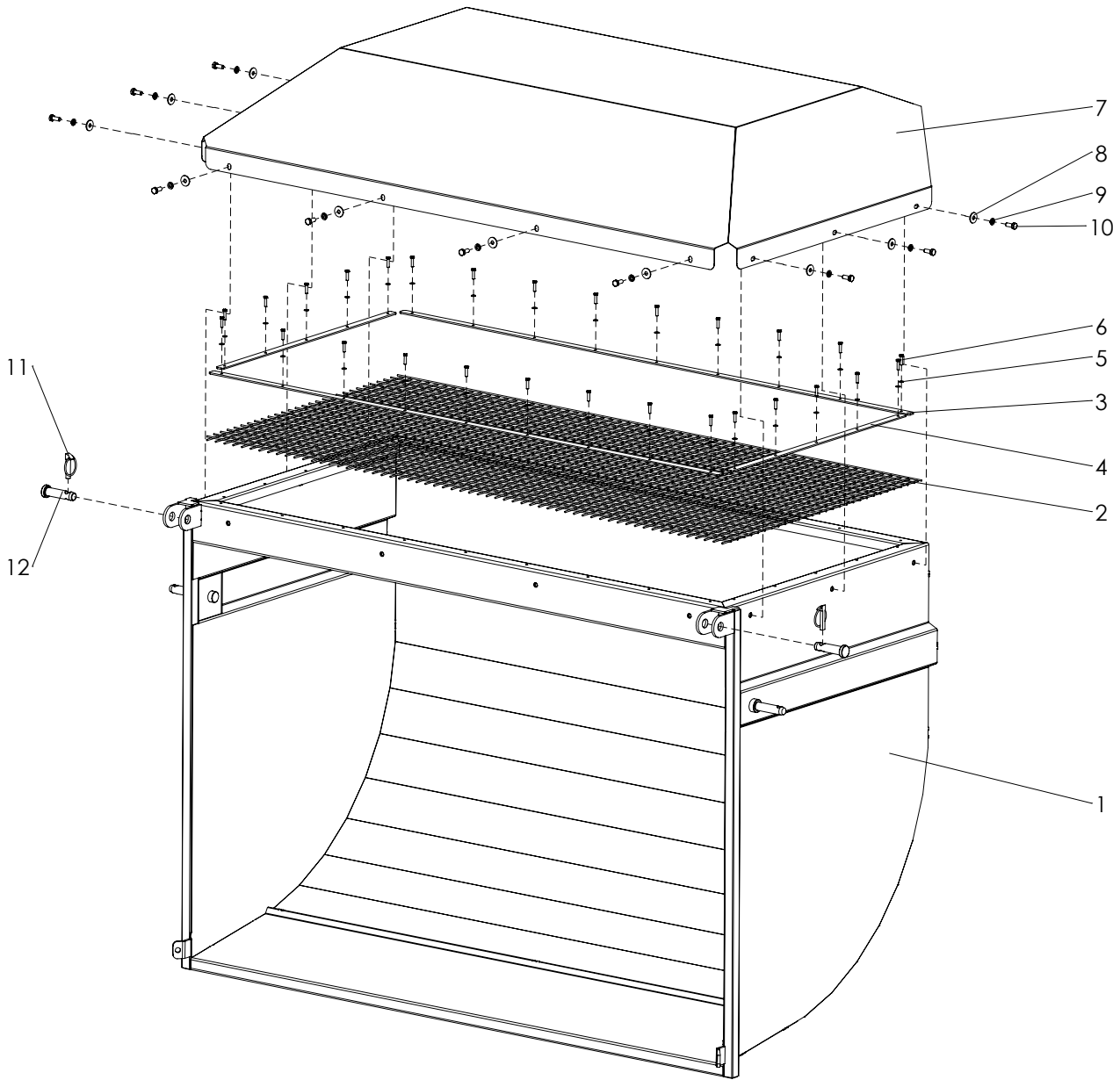
ITEM	PART NUMBER	DESCRIPTION	REMARKS	QUA
1	864.120.030	Washer M12 - DIN 125A		4
2	804.120.400	Hex bolt M12 x 40 - ISO 4017 - Grade 8.8		2
3	830.120.120	SL nut M12 - DIN 985 - Grade 10		2
4	TR-031.0200.24	Roller		1
5	TR-031.0210.22	Bracket left		1
6	TR-031.0210.23	Bracket right		1
7	742.250.361	Bearing PCFT25		2
8	864.100.030	Washer M10 - DIN 125A		8
9	830.100.100	SL nut M10 - DIN 985 - Grade 10		6
10	804.100.400	Hex bolt M10 x 40 - ISO 4017 - Grade 8.8		4
11	864.100.031	Washer M10 large - DIN 9021		6
12	826.200.200	Nut M20 - DIN 934 - Grade 8		4
13	864.200.041	Washer M20 large - DIN 9021		4
14	TR-031.0200.25	Spindle		2
15	TR-031.0210.68	Scraper		1
16	880.060.100	Grease nipple M6 - DIN 71412 - 180°		2



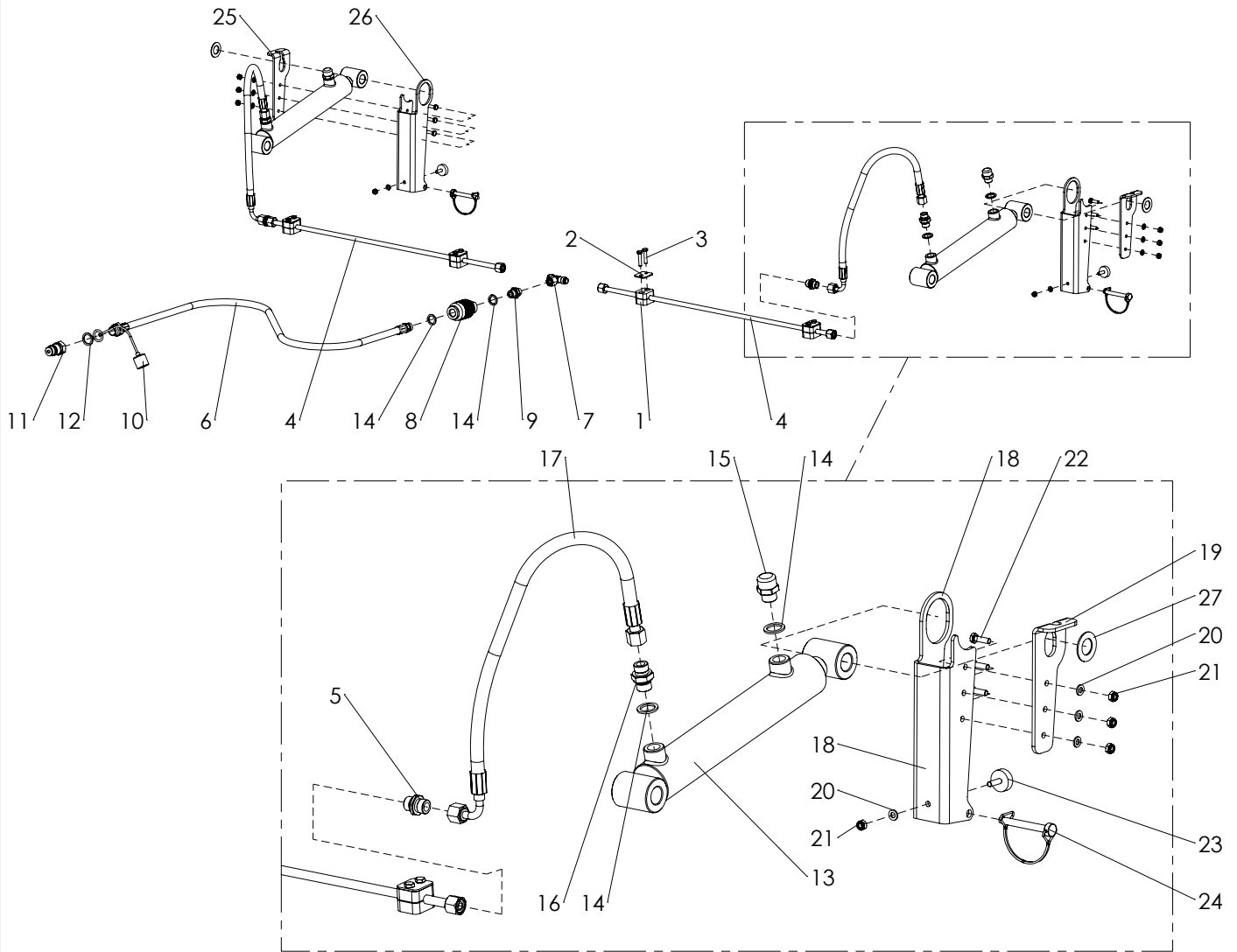
ITEM	PART NUMBER	DESCRIPTION	REMARKS	QUA
1	864.100.030	Washer M10 - DIN 125A		6
2	864.100.031	Washer M10 large - DIN 9021		6
3	830.100.100	SL nut M10 - DIN 985 - Grade 10		6
4	804.100.300	Hex bolt M10 x 30 - ISO 4017 - Grade 8.8		2
5	804.100.400	Hex bolt M10 x 40 - ISO 4017 - Grade 8.8		4
6	TR-61.04020	Cap		4
7	820.080.300	MH bolt M8 x 30 - ISO 8677 - Grade 8.8		6
8	830.080.080	SL nut M8 - DIN 985 - Grade 8		6
9	TR-031.0210.60	Rotor cover		1
10	TR-031.0110.14	Skid		2
11	TR-031.0210.30	Brace right		1
12	TR-031.0210.35	Brace left		1
13	TR-031.0210.56	Clamp strip square hole		1
14	TR-031.0210.57	Clamp strip		1
15	TR-031.0210.55	Rubber guide		1



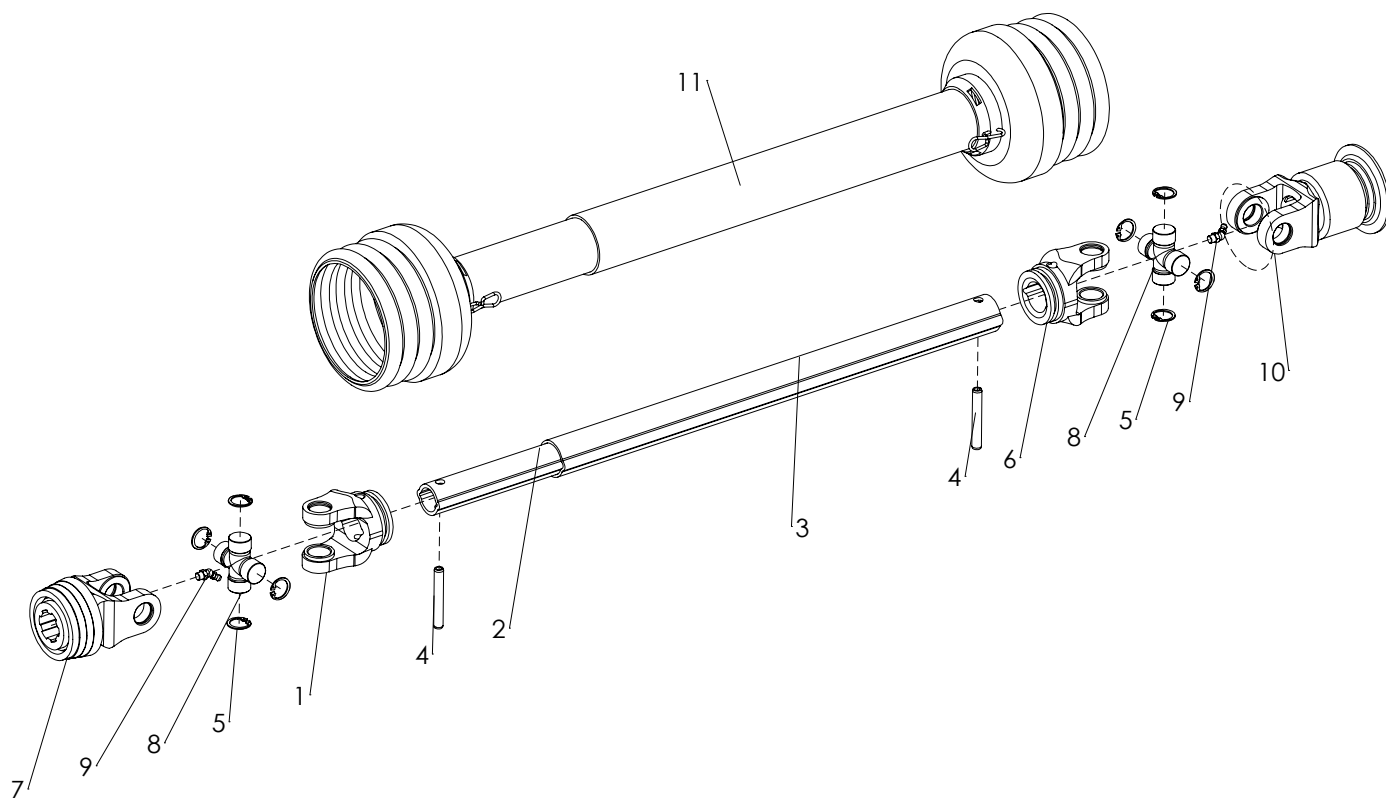
ITEM	PART NUMBER	DESCRIPTION	REMARKS	QUA
1	864.100.030	Washer M10 - DIN 125A		8
2	866.100.020	Spring washer M10 - DIN 127		17
3	864.100.031	Washer M10 large - DIN 9021		17
4	830.100.100	SL nut M10 - DIN 985 - Grade 10		4
5	804.100.200	Hex bolt M10 x 20 - ISO 4017 - Grade 8.8		17
6	802.100.550	Hex bolt M10 x 55 - ISO 4014 - Grade 8.8		4
7	TR-031.0210.01	Rotor frame		1
8	TR-031.0110.01	Collector guide		1
9	864.180.030	Washer M18 - DIN 125A		2
10	878.100.400	Roll pin 10 x 40 - ISO 8752		2



ITEM	PART NUMBER	DESCRIPTION	REMARKS	QUA
1	TR-031.0110.40	Hopper		1
2	TR-031.0110.56	Screen		1
3	TR-031.0110.57	Clamp strip long		2
4	TR-031.0110.58	Clamp strip short		2
5	864.050.030	Washer M5 - DIN 125A		28
6	804.050.200	Hex bolt M5 x 20 - ISO 4017 - Grade 8.8		28
7	TR-031.0110.55	Canopy		1
8	864.080.024	Washer M8 large - DIN 9021		10
9	866.080.020	Spring washer M8 - DIN 127		10
10	804.080.200	Hex bolt M8 x 20 - ISO 4017 - Grade 8.8		10
11	523.110.450	Linch pin		2
12	A0002279	Pin Cat.1		2



ITEM	PART NUMBER	DESCRIPTION	REMARKS	QUA
1	A0002313	Hose clamp Ø10		4
2	537.020.341	Deck plate		4
3	804.060.300	Hex bolt M6 x 30 - ISO 4017 - Grade 8.8		8
4	TR-31.03070	Hydraulic tube assembly		2
5	544.100.100	Straight Nipple Ø10 x Ø10 (M16)		2
6	TR-031.03040	Hydraulic hose		1
7	A0002315	T-Connector PM, Pipe 10-M16		1
8	A0002316	Flow control valve 3/8 BSP		1
9	544.170.100	Nipple BSP 3_8" x pipe 10 (M16)		1
10	539.241.502	Hydraulic connector cap red		1
11	545.210.800	Quick connector male 1/2"		1
12	874.210.020	Bonded seal ring 1_2"		1
13	A0002277	Hydraulic cylinder		1
14	874.170.020	Bonded seal ring 3_8"		6
15	537.380.360	Breather 3/8"		2
16	544.170.100	Nipple BSP 3_8" x pipe 10 (M16)		2
17	TR-31.03030	Hydraulic hose		2
18	A0002342	Lock bracket		1
19	A0002343	Lock strip		1
20	864.060.030	Washer M6 - DIN 125A		8
21	830.060.060	SL nut M6 - DIN 985 - Grade 8		8
22	804.060.200	Hex bolt M6 x 20 - ISO 4017 - Grade 8.8		6
23	A0002441	Rubber stop		2
24	A0002282	Clip 8mm		2
25	A0002344	Lock strip		1
26	A0002345	Lock bracket		1
27	2894039	Washer		2



ITEM	PART NUMBER	DESCRIPTION	REMARKS	QUA
1	613.841.074	Walterscheid® Inboard yoke RG 2200 - 1041065		1
2	613.405.800	Walterscheid Profile 0v - 1045629		1
3	613.485.750	Walterscheid Profile 1 - 1045632		1
4	878.100.700	Roll pin 10 x 70 - ISO 8752		2
5	872.024.120	Circlip D=24 - DIN 472		8
6	613.841.076	Walterscheid® Inboard yoke RG 2200 - 1041068		1
7	613.841.292	Walterscheid® Quick-disconnect yoke ASGE 2200 - 1133832		1
8	613.240.610	Walterscheid® Cross kit W - default 2200 - 1044439		2
9	880.080.104	Grease nipple M8x1 - DIN 71412 - 45°		2
10	613.841.702	Walterscheid® Overrunning clutch F 5/1R - 1366589		1
11	613.156.710	Walterscheid Safety guard SD 15 - 1368632		1
	613.142.900	PTO - W 2200 SD15 710 F5/1R	PTO complete	